

# The Oaks



## Inside this issue:

<b>Bucklebury Parish Council</b>	
<b>WB Councillors</b>	8
<b>Family</b>	9
<b>Organisations</b>	13
<b>Halls</b>	16
<b>Country Life</b>	16
<b>Sport</b>	22
<b>Contributions</b>	23

## Bucklebury Parish Chairman's Letter

As I write this it is once again raining as seems to have been the case most days over recent weeks. While this has made parts of the Common a mudbath and resulted in water pooling on the roads we can at least take some solace that the reservoirs and aquifers, so empty in late summer, will have filled up.

Your PC has been and is fully engaged in our response to the Regulation 19 consultation stage in the West Berkshire Council (WBC) Local Plan process. I need hardly remind you the Local Plan is proposing 1500 houses are built in the plan period on our doorstep in NE Thatcham. This is almost certainly the most challenging issue to confront the PC in the over 25 years I have served on the Council.

The consultation stage, after a delay, opened on 20<sup>th</sup> January. May I encourage parishioners to make representations to WBC via the on line form, via email, or by letter. The PC, through the Bucklebury Says No campaign, will be issuing regular advisory notes over the next few weeks on the key issues of objection to the 1500 houses scheme in order to assist those formulating objections. Later there will be a Zoom meeting to update parishioners on progress and enable them to ask questions of our two consultants. Our MP, Laura Farris, is familiar with Bucklebury's concerns about the impact of this proposed development. She is particularly concerned about the impact on the setting of the Area of Outstanding Natural Beauty. She also intends to hold a virtual meeting with parishioners, probably early next month.

As you will appreciate the Bucklebury Says No team is putting considerable effort into ensuring we produce a strong rebuttal to

this plan for NE Thatcham. The funds we raised in the Parish have supported this activity and the services of two consultants.

A reminder: representations on the Local Plan have to be lodged with WBC by 3<sup>rd</sup> March.

For the first time in 3 years we were able to have our open air Carol Service at the Chapel on the Common just before Christmas. True to form it rained but, fortified by mulled wine, this did not dampen the spirits of the singers. Nearly £200 was raised for our chosen charity-the Newbury Food Bank.

By the time you read this our new PC website will be up and running. As with many other PCs we now have contracted for it to be managed by a professional organisation. This will result in more information being posted, such as progress on planning applications, and a much improved currency of the site.

There is continuing concern in the Parish about speeding. The PC has purchased a Speed Indicator Device and a number of people have been trained in its use. It will be deployed shortly to encourage, when needed, motorists to slow down and to collect data for forwarding to WBC and Thames Valley Police.

Robin Ranken, a councillor for over 5 years, has decided to resign. Robin has been a dedicated councillor who has kept a close eye on happenings in the Village. With the local elections looming, when the PC will be up for re-election, we have yet to decide if we will co-opt someone to take Robin's place.

Parish Council Chairman  
Barry Dickens

Parish Council Clerk  
Helen Pratt

The Oaks Editorial Team  
Editor: Barry Dickens  
Typography: Helen Pratt  
Proofing: Lindy Clarke &  
Anne Hillerton

Finally there are plans afoot to celebrate HM The King's Coronation in May. The Cottage Inn will host an event on the day of the Coronation. Other events are under consideration.

Cllr. Barry Dickens  
Chair of Bucklebury Parish Council

## Parish Council Matters Arising

### Thatcham NE Housing Development approved by WBC

*This proposal will affect every household in  
Bucklebury Parish.*

*WBC approval does not mean this Plan will now  
go ahead.*

**The deadline to have your say is 3<sup>rd</sup> March.**

West Berkshire Council (WBC) **approved** the latest version of the NE Thatcham Plan on Thursday, 1<sup>st</sup> December, 2022. This Local Plan has now proceeded to the 'Regulation 19 Consultation' period which will end on 3<sup>rd</sup> March.  
<https://www.westberks.gov.uk/lpr-proposed-submission-consultation>

The boundaries of the new development at Thatcham North East remain the same: they extend from Cox's Lane in the east at Colthrop almost to Lawrence's Lane to the west in Thatcham, and to spread most of the way up the slopes between Thatcham and Upper Bucklebury. The claimed 'reduction' in the number of houses to 1,500 is misleading – see below.

Bucklebury Parish Council (BPC) believes that the revised Local Plan is **fundamentally unsound**. It will continue to raise objections on the basis of solid evidence throughout the 'Regulation 19' consultation period, 20<sup>th</sup> January to 3<sup>rd</sup> March, 2023. The comments and objections will go to the Planning Inspectorate so this is our opportunity to tell the independent inspector what we think of WBC's plan.

**The only way of ensuring that your views are known and are taken account of is to participate in the Regulation 19 Consultation. This is now live and runs until 3<sup>rd</sup> March, 2023 and will be given wide publicity.**

**Remember:**

*Council Officers are required to read your communications to WBC and to take account of the number that they receive. They do not seek out social media comments, online articles or letters to the press*

*to find your opinions. Your individual responses are essential and will make a difference.*

*See below on Where to find Advice; What are the key Objections, and How to Respond to WBC*

**Where can you find Advice and Information to help you in your responses?**

The WBC Local Plan review 2022-2039 is a lengthy and not necessarily accessible document. Look at the following for help in understanding the key issues and to inform your responses:

- Regular email communications (Bucklebury Says No) [buckleburysaysno@gmail.com](mailto:buckleburysaysno@gmail.com) and on Facebook : "Say NO to Thatcham NE Development": <https://www.facebook.com/groups/411212780100239/>
- Bucklebury Parish Council website– current and historical information:  
<http://www.buckleburyparish.org>
- A draft of the **PARISH COUNCIL'S COMPREHENSIVE REBUTTAL** of the Local Plan's proposals for NE Thatcham will be posted on the BPC website in early February
- Penny Post – a weekly newsletter, online and by email; subscribe for free  
<https://pennypost.org.uk/2023/01/wbc-local-plan-consultation-2023/>
- Regulation 18 - see previous submissions and responses in early 2021 to the first Local Plan, pages 1091 – 2237; BPC objections from page 1117  
[https://www.westberks.gov.uk/media/53795/Proposed-Submission-LPR-Consultation-Statement-pdf/Consultation-Statement-Proposed-Submission-LPR-Dec-2022-v2.pdf?m=638084385899730000](https://www.westberks.gov.uk/media/53795/Proposed-Submission-LPR-Consultation-Statement/pdf/Consultation-Statement-Proposed-Submission-LPR-Dec-2022-v2.pdf?m=638084385899730000)
- Attend the **BPC Zoom meeting, 7pm on 3<sup>rd</sup> February** which will report on progress. The BPC consultants will be there to answer your questions:  
<https://us02web.zoom.us/j/86080759155?pwd=L1pPeUt5WlJlVQVZ5am9aUVFtMjFiQT09>

**What are the key subjects for your Objections?**

- **Traffic** – increased traffic through Upper Bucklebury and other villages; WBC propose a new roundabout on Harts Hill to allow traffic in and out of the northern end of the development, and a car park, also on Harts Hill; additional congestion on the A4.
- **Pressure on secondary schools** – Kennet is already over-subscribed; accommodation for additional secondary school places has not been specifically stated
- **Consequential damage to the Common** – increased footfall; increasing damage to an ecosystem of national importance .

- **Environment** – Greenfield development abutting an AONB with no up-to-date evidence or strategy for positive impact and overall biodiversity gain.
- **Pressure on medical & complementary services** – additional GP surgeries are not part of NHS strategy for the future.
- **A ‘Country park’** – this has a specific accepted definition which is not met in this Plan. The three small, isolated areas inside the proposed settlement boundary have no meaningful environmental value or commitment to exclude subsequent development.
- **Lack of strategic gap between Thatcham and Bucklebury** – Thatcham and Upper Bucklebury will effectively merge and Upper Bucklebury will lose its identity.
- **Number of houses now “at least 1,500”** – From an initial site assessment of 2,500 of which 1,250 were to be built in the Plan period, this has now in fact **increased** to 1,500 houses because the Plan extends to 2039 rather than 2036 (as originally proposed).

#### How do you object?

- Submit your objections via **email** : [planningpolicy@westberks.gov.uk](mailto:planningpolicy@westberks.gov.uk) or **post** (Planning, Council Offices, WBC, Market Street, Newbury, RG14 5LD). Objections can be submitted by completing the **Representation Form** available to download from <https://www.westberks.gov.uk/lprproposed-submission-consultation>. Please complete a separate representation for each part of the LPR on which you wish to comment. Representations should be sent to [planningpolicy@westberks.gov.uk](mailto:planningpolicy@westberks.gov.uk) or the Planning Policy Team, Development and Regulation, West Berkshire Council, Market Street, Newbury, RG14 5LD.
- Object directly via the WBC consultation platform from **20<sup>th</sup> January until 4.30pm on 3rd March, 2023**. Use: <https://consult.westberks.gov.uk/kse/> - the Consultation option (Regulation 19) is now active. Registration is required but is straightforward

These objections will then be collated, considered and summarised: they will ultimately form part of the documentation that goes to the Government’s Planning Inspectorate for independent evaluation at the end of this consultation period.

**It is crucial that as many of us as possible make our voices heard before 3rd March.**

## Questions and Answers on the Thatcham NE Housing Development Friday 3rd February at 7pm

**Zoom link:**

<https://us02web.zoom.us/j/86080759155?pwd=L1pPeUt5WlJlVQVZ5am9aUVFtMjFiQT09>

### Parish Precept

This Financial Year (FY) the Bucklebury Parish Council precept is £27K. So far the cost of our opposition to the proposed NE Thatcham development has been met from donations and a small grant out of PC funds. In FY23/24 the next and final stage of our involvement with the Local Plan process will entail preparation for and representation at a Public Inquiry. This is estimated to cost as much as £13K. To cover this eventuality and the jump in inflation BPC has decided to raise the precept for the next FY to £45K.

In FY22/23 a precept of £27K cost a Band D property in Bucklebury £25.54pa. A precept of £45K will raise this cost to £42.23, an increase of £16.69pa.

It is anticipated that the precept will be reduced in FY24/25 to no more than £35K, once work on the Local Plan has been completed and hopefully inflation has abated.

**Barry Dickens**  
**Chair of Bucklebury Parish Council**

### Recycling

DO YOU RECYCLE ...

**WBC IS NOW DOING IT—HOORAH!**

#### **Clean Plastic Bottle Tops.**

A huge thank you to everyone that helped with the recycling of plastic bottle tops, but now your work has come to an end ..... well sort of!! West Berkshire Council now take clean plastic bottle tops and ask that you put them in the green bag loose with the plastic bottles that you put out with your fortnightly recycling collection.

As I sort out the ‘stragglers’ I can tell you that in the 3 year project we have sent for re-cycling 230 Kgs of plastic tops (remember the average top weighs 2 grammes!).

Enjoy the year of 2023 with the knowledge that Bucklebury really did their bit in increasing re-cycling in the county.

**Hilary Cairns**

## Grit Bins

BPC has recently checked the 12 salt/grit bins maintained by the Parish Council and all of those on the roads have good inventories and are de-brambled so they are accessible once again.

Thanks go to Jason Allum for his work on the one in The Slade that had become inaccessible. Three appear to have been displaced and so will need reseating as the lids no longer fully close. If you are aware a service contractor or delivery van has “moved” one please can you let the Parish Clerk ([clerk@buckleburyparish.org](mailto:clerk@buckleburyparish.org)) know.

**Cllr. David Southgate.**

## Fred Dawson Playpark & Bucklebury Bike Track

The playpark and the bike track are Bucklebury Parish Council facilities and are checked weekly for any issues that might occur. Since our new CCTV has been installed, I'm delighted to report that we have had no problems of vandalism. If you happen to see a problem then please email Helen, our clerk, on [clerk@buckleburyparish.org](mailto:clerk@buckleburyparish.org).



A shortcut on the bike track.

Problems occur by accident and wear and tear as well as vandalism and the sooner we know, the quicker it can be dealt with. Both playpark and track undergo a rigorous check annually in the spring by RoSPA (Royal Society for the Prevention of Accidents) from which we receive a detailed report. One of the issues we have to guard against is

shortcuts being made on the bike track. You will sometimes see barriers set into the grass. They are to stop cyclists making or riding on shortcuts which are considered dangerous when there are several cyclists using the track because someone can end up going the wrong way. Unfortunately, once a shortcut has been made it looks very much as if it is part of the track so barriers are our best defence. In the photo the shortcut back to the start looks like part of the track. By the time you read this, a barrier should have been put up there. Later in the spring we'll try laying turf again.

**Cllr. Anne Hillerton.**

## Speeding

The Parish Council (PC) have produced and submitted the extensive paperwork required by WBC to licence us to operate our own Speed Indicator Device (SID) at 12 sites in the Parish. Training has been conducted by the SID supplier with BP Councillor David Southgate and then he has so far



Residents completing their SID training.

trained 9 others in the Parish to operate the equipment. Our operating instructions and risk assessment were endorsed by the supplier and they are now being shared by them with other PCs to help them get started. The equipment is simple to deploy and bespoke messages for drivers who speed or comply with the 30 mph limit can be programmed into the device. This will help push the road safety message to drivers. If you have any 2 to 4 word suggestions for either situation please share them with David. The data will be shared with WBC and TVP to advise them of areas requiring enforcement. More volunteers in the parish to help deploy and recover the device would be most welcome so that we can maximise its use once we have WBC approval. Please contact [david@sogat.net](mailto:david@sogat.net) if you are able to help.

**Cllr. David Southgate.**

## Planning

The number of planning applications being submitted in Bucklebury has reduced significantly in recent months, and some planning meetings have been cancelled because there are no applications to be discussed. On the basis of how much work your councillors are doing for the Regulation 19 consultation on the Local Plan, this reduction is a good thing!

**Helen Pratt—Clerk to Bucklebury Parish Council.**

Reference	Description	BPC Status	WBC Status
21/01815/FULMAJ	<u>5-10 Paradise Way.</u> Demolition of 6 No. dwellings and ancillary structure, and the erection of 10 No. new affordable homes composed of two and three bed houses, all with associated access, parking, amenity and landscaping.	Object.	Awaiting decision.
21/02522/COMIND	<u>Bucklebury Farm Park.</u> Refurbishment and extension of existing visitor barn and associated structures, new storage building and associated landscaping and amendment of route of public right of way.	No Objection.	Approved.
22/00279/FULD	<u>Wenden, Long Grove.</u> Demolition of existing dwelling and construction of a new detached 4/5 bed house with garage and indoor pool.	Object.	Awaiting decision.
22/00918/FULD	<u>Ivinghoe (Adjacent Parish).</u> Replacement dwelling and landscape enhancements.	Object.	Dismissed on appeal.
22/01348/MINMAJ	<u>Hartshill Copse, Burdens Heath.</u> Section 73a: Variation of Condition 1 (Temporary Permission) of previously approved application 21/01451/MINMAJ: Section 73 – Variation of condition 1 (Temporary Permission) of planning permission 19/03158/MINMAJ – Section 73A: Variation of condition 1 – temporary permission 3 – approved plans and 28-final levels of approved application 17/03493/MINMAJ: Section 73. Variation of condition 1 (time period of operations) of the appeal decision APP/U0300/A/88/93423 for Extraction of hoggin from Land adjoining Harts Hill Road, to enable a satisfactory restoration scheme to be agreed, implemented and completed.	No Objection.	Approved.
22/01442/FULD	<u>Middle Wood, Hatch Lane.</u> Erection of a dwelling with associated parking and landscaping.	No Objection.	Refused. Taken to appeal.
22/01538/HOUSE	<u>Patchways, Upper Bucklebury.</u> Proposed first floor rear extension and addition of solar panels.	No Objection.	Approved.
22/01579/FUL	<u>Clover House, Westrop Farm (Adjacent Parish)..</u> Construct an all-weather arena, stable block and permanent field shelter, and a manure clamp. Change of use to equestrian.	No Objection.	Approved.
22/01908/HOUSE & 22/01909/LBC2	<u>The Old Cottage, The Avenue.</u> Single storey side and rear extensions.	No Objection.	Approved.
22/02159/FULD	<u>Red Hill House, Briff Lane.</u> Proposed new extension, door surround and dormer windows, pool and pool house. Part change of use from equestrian land to residential.	No Objection.	Withdrawn.
22/02237/HOUSE	<u>Marywell.</u> Formation of replacement swimming pool following, removal of existing.	No Objection.	Approved.
22/02340/HOUSE	<u>Kennel Barn, The Slade.</u> Single storey rear extension. Insertion of rooflights to front and rear elevations. Insulation and render to existing brick elevation.	No Objection	Refused.

22/02453/HOUSE	<u>Chapel Row House.</u> Extensions and alterations to existing house.	No Objection.	Approved.
22/02572/FUL	<u>Vanners.</u> Revised retrospective application for a change of use of land from temporary site compound (formerly agricultural use) to incidental residential use.	Object.	Refused.
22/02852/HOUSE	<u>Marywell, Chapel Row.</u> Erection of three-bay garage with storage.	No Objection.	Awaiting decision
22/02797/HOUSE	<u>Tylers Lane Cottage.</u> Removal of existing garage and replacement with proposed three bay oak framed garage.	No Objection.	Approved
22/02903/FUL	<u>Mount Mist, Harts Hill Road.</u> Demolish existing bungalow and erection of a replacement dwelling and detached garage/car port with associated alterations.	No Objection.	Awaiting decision

## Bucklebury Avenue – The Coronation Extension

The Avenue of Oaks, which is such a signature of our village, originally extended from the Avenue Gate (on the boundary between Bucklebury and Bradfield Southend), up through to Chapel Row and then turned North, down Chapel Row Hill to the Manor.

The Avenue has been a focal point of Bucklebury for centuries with close royal connections. It is believed that the Inner Avenue was planted to commemorate the visit of Queen Elizabeth I in 1568 and the Outer Avenue in 1822 to celebrate the Battle of Waterloo. There are also some references to the Oaks having being planted during the reign of Queen Anne. There is no doubt that a single tree was planted on the Triangle in Chapel Row in 1970 by Princess Anne (now the Princess Royal).

More new oaks were planted in 1972/1973 in the gaps on the main avenue to commemorate Queen Elizabeth II's visit to Kings Copse House, Bucklebury on 26<sup>th</sup> May 1972.

A really nice section of the rejuvenated Double Avenue was planted to mark the Millennium and this extends from the Triangle to the Pond at Chapel Row Farm. In 2011 a further row of oak trees was planted on the green at Chapel Row to mark the marriage of Catherine Middleton and Prince William, now the Prince and Princess of Wales. The royal connection with the Avenue is very strong as Catherine Middleton lived in the Avenue for a long while as did Prince William's Mother, the late Diana Spencer who

used to stay at Hilliers House while visiting her mother Lady Shand Kydd.

It seems only fitting that to mark the late Queen Elizabeth's reign and the Coronation of King Charles that Bucklebury should try to commemorate that fact, in a green and sustainable manner, and what better way than to restore some of the missing section of Avenue from Chapel Row to the Manor.

### Current Status

Some of the original trees are still in situ on the original route with notable leviathan trees at Barfield (Chapel Row), The Corner at Crossways (Chapel Row) and the Old School (Bucklebury). These existing trees need to be protected as far as possible but all are showing signs of their, not inconsiderable, age. For some inexplicable reason, many of the original trees were cut down and cleared around 1945.

### Proposal

To replant a single row of oaks (*Quercus robur*) where possible to mark the original route. It would be wonderful if this was a village project that brought us all together, to plant and look after the trees for future generations. It would also be very fitting if trees could be also planted to remember any Bucklebury parishioners who have passed away as a result of the pandemic or those who have loved ones they wish to be remembered.

The Lord of the Manor, Willie Hartley Russell, has given permission to plant the trees on his land for the first section from the Manor towards Littlefence Wood. To complete the entire section is a huge undertaking but we have to make

a start somewhere. The existing oaks on Chapel Row Hill need to be inspected and this area tidied, to allow for biodiversity. Some limited clearance may be necessary to encourage the growth of selected existing trees but this section can only be completed with the assistance of voluntary labour.

For now, the proposal is just the first stage and we would welcome any input from the parish to come and assist in the planting and maintaining of the new trees and if you wish to help or be involved, please have no hesitation in contacting me.

### Considerations

- The hedges and verges will still need to be maintained by regular maintenance and the planting needs to be carefully considered to maintain access.
- Trees, especially during the first few years, will need to be watered and perennial weeds removed around their bases. The former is the most difficult item to organise on a long-term basis and assistance is required on this matter.

- The Highways department need to be consulted to agree on the planting schedule and proposed location, although for the first proposed section this will not be a requirement.
- The young trees will require some protection against rabbit, deer and, unfortunately, humans. This is a matter to be discussed in more detail and the appropriate guarding implemented.
- The existing trees need to be protected by Tree Preservation Orders or similar protocols.

Interestingly, when we started researching the route of the original Avenue, we were enlightened by Willie Hartley Russell of another avenue which ran from the Manor, south up Pease Hill and terminated at the boundary between the Common and Carbins Wood Lane (near the entrance to Bucklebury Place) This would have been a substantial undertaking and we have limited information and do not know of the type of trees that were planted, so if anyone has more information it would be gratefully received.

**Cllr. Jason Allum.**



An old postcard of The Avenue, Bucklebury.



## West Berks District Councillor

### WBC Councillor's Report

Wishing everyone a happy and healthy 2023!

I know there are other articles in this edition of The Oaks about the Local Plan but I felt it was important to offer some guidance about the main issues and to inform you of what I have been doing to represent you and the Parish.

The final consultation on the plan started on 20<sup>th</sup> January and runs for six weeks until 3<sup>rd</sup> March and I would urge you to make your comments known to WBC in good time as all will go forward to a Public Enquiry held by the Planning Inspectorate. The Planning Inspector will read all evidence so it is important that as many letters/emails as possible are sent, it is not unusual for Inspectors to make radical changes to a Plan during the Enquiry and all changes need to be based on evidence. A lot of work is being done with the help of consultants employed by BPC but it is important for individuals to make their case too.

I know there are many different concerns, which I share, about how the Plan affects Bucklebury and the AONB and many of you have asked me to assist in guiding you about the main issues of concern, so I thought it would be helpful to briefly outline some areas of concern here. I am happy to give further detail and guidance;

#### **Alternative sites.**

I have facilitated two meetings with the developer (Croudace), promoting the Colthrop site, and senior planning officers. This site would provide a bridge over the railway and river/canal as well as pushing development further from the AONB. We need the Inspector to make a full appraisal of this proposal and this could result in a big reduction of houses on the NE Thatcham site.

#### **Traffic.**

Wherever houses are built we must ensure people are discouraged from using our rural roads as rat-runs. We need to make sure all access to and from any site is to the A4 and not Harts Hill.

#### **Environment.**

We are fortunate to be surrounded by common land which is, of course, open to everyone. The Common is however a fragile eco-system and not a country park or "playground" for new development. There are ecological issues relating to the fields allocated in the Plan too and I urge you to read the comments being made on behalf of BPC by the ecology consultant.

#### **Defined Gap.**

Until about twelve years ago there were national policies called "Strategic Gaps". These policies were removed but I have been pushing for a "Defined Gap" between Bucklebury and Thatcham to be identified in the Plan to maintain the rural identity of Bucklebury. Such gaps are in the Plan elsewhere and I am disappointed for there not to be one here.

I will not list any more suggestions here but any points you make are legitimate, such as housing numbers in total, development should be on brownfield sites and not on green fields etc. It is essential we remain a "plan lead authority" (with the right plan!) to ensure that large scale development is not granted permission on appeal, to maintain housing numbers as has occurred elsewhere, where no Plan is in place.

West Berkshire Council has a really good record of assisting people in difficult times, when Covid first appeared we established a Covid Hub to provide guidance and advice. We were also able to point people in the right direction if it was not directly a WBC issue. When we started living with Covid and building up resistance to it the Hub became the Ukraine Hub to, once again, offer guidance and support to the amazing families who offered to share their homes with our new guests.

We continue to offer that support to those hosting Ukrainian families but the Hub has now morphed into the Cost of Living Support Hub which is an on-line and telephone based service. The Council invested £100,000 in the Hub which was match funded by the Greenham Trust so emergency funds are available as well as the usual advice, guidance and sign posting. One issue with this is the sensitivity for some people to ask for help, which is not an admission of failure! If anyone knows of families or individuals who are in need of such help the Hub can assist so please try to pass on details of this amazing scheme to them. All contact is, of course, totally confidential.

Finally, this will be the last report I shall write for The Oaks. Three years ago I promised my family that I would retire as a District Councillor at a certain "milestone" birthday which has now been reached. It has been a privilege to have represented the Parish for 40 years (considerably longer than I was an Air Traffic Controller!), four years on the parish council from 1983-87 and 36 as your District Councillor.

Thank you everyone for your support over the years.

**District Cllr. Graham Pask Tel: 01635 864023**

**Email: [Graham.pask@westberks.gov.uk](mailto:Graham.pask@westberks.gov.uk)**



## Family

### 1st Bucklebury Guides

Bucklebury Guides is part of Girlguiding UK and is for girls aged 10-14. We meet on Monday evenings during term time at the Victory Room, Bucklebury Village.

We started the Autumn term remembering her late Majesty, Queen Elizabeth II. The guides learnt about the Queen's role in Girlguiding as a child and her role in WW2.

We finished off our Rustle Bustle Squeak badge this term and earned the spider segment of the caterpillar badge we were working towards in 2022. We had two evenings learning about spiders in the UK and completing different spider activities. We were then visited by two Community First Responders who taught us CPR on adults and children.



Guides learning CPR

All the Guides learnt CPR using resusci Anne and they even had a 'race' to see who would make it to hospital first with the best CPR!

We attended Commons Clearing in October and the Guides had great fun trying to see who could collect the most



Bucklebury Guides at the War Memorial

rubbish!

In November we made remembrance poppies in preparation for Remembrance Sunday when we paraded at Bradfield War Memorial. The event was well attended by Guides and as leaders we were very proud of how well they paraded. This year we celebrated parliament week where the Guides learnt about democracy and how Parliament works in the UK. The Guides finished the evening making Big Ben and the Houses of Parliament out of spaghetti and jelly tots. We went for a festive night walk at the beginning of December which is always a popular evening. Luckily the weather stayed dry for us and we could enjoy the walk with our festive headwear on!

During our annual Christmas sleepover at the Victory Room we had a mini Olympics with activities themed around Christmas and sprouts! We had takeaway pizzas for dinner followed by chocolate mug cakes. In the morning we organised a mini secret santa game before croissants and pain au chocolat for breakfast. The Christmas sleepover is a great opportunity for Guides who haven't been away with us to experience a short residential with us close to home.

We finished the term with a brilliant Christmas party organised by our older patrol which featured lots of Christmas games and activities plus some party food!

We have lots planned for the spring term including continuing to learn basic first aid, International Women's Day and a Chocolate Challenge badge! We are going to Wellies and Wristbands festival at Foxlease in the New Forest in August, so the Guides are starting to plan their fundraising.

If your daughter is interested in joining us please email [buckleburyguides@gmail.com](mailto:buckleburyguides@gmail.com) to arrange a taster evening.

**Vicky Pratt—Bucklebury Guide Leader.**

## Bucklebury Community Bus

### The Bucklebury Bus charity welcomes new trustees.

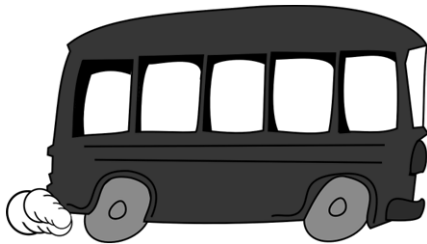
The Bucklebury bus charity was established in 2016 as a 'not for profit' transport facility for the residents of the Bucklebury parish. The community fundraised to purchase the bus when West Berkshire Council discontinued the school bus service from Upper Bucklebury to Kennet School in Thatcham. The vehicle has also been available for use, with prior arrangement, by residents of the parish.

Many of the trustees that are now stepping down have run the charity since it was set up in 2016, very generously donating their time and effort, for free, to serve the community. The bus service has been a lifeline for so many children.

The new team of trustees wish to express their sincere thanks to Anne Hillerton, Michelle and Jim Hunt, Peter Weedon, Phil Evans and Janet Wild for all that they have done over the last seven years.

We are looking for more people to be involved. If you are interested in becoming a trustee, please get in touch [buckleburybus@gmail.com](mailto:buckleburybus@gmail.com).

### The Bucklebury Bus Trustees



## Bucklebury Primary School

The autumn term is by far the longest of the school year. September to December sees the last glows of summer give way to autumn and latterly some rather chilly days! Over the term, children have worked as hard as ever, developing their knowledge and skills in a range of areas. The second half of the autumn term saw many highlights.

We marked Armistice Day with our whole school act of Remembrance. Later in November, we held a successful second open morning.

December began with the return of the hugely popular Christmas Bazaar. We continue to be grateful for the ongoing support of FOBS. It was a lovely way for the

school family to mark the start of advent. This was followed by our annual prayer week.

We dined together as a whole school for our Christmas Dinner for the first time since 2019. Thank you to staff, governors and volunteers who ensured that service was smooth. Well done to the children for such wonderful jumpers and seasonal hats!

The last 10 days of term saw two nativity shows, class celebrations and our traditional Christmas Service at All Saints' Church.

The spring term is the fulcrum of the school year. It is the time when every child needs to gather pace in their learning and build on the foundations they have built in the autumn. It is an exciting time being as it is also the shortest term!

Our core value for the term is faith. We believe that every child should know the strength of living faith. Across the term through collective worship, in classrooms and throughout the school day, we will consider how crucial belief is for every one of us. Whether this is belief in ourselves, in each other or in God, we know that if we can say yes, it makes so much difference. As Henry Ford said 'if you think you can, or think you can't, you're right'.

That wonderful children's programme, Sesame Street, once showed a song called 'The power of YET'. Its message is rooted in the gospel value of faith. It reminds us that to succeed and learn we need faith and we must always remember that just because we can't do something today, it doesn't mean we shall never be able to do it. It can be found on youtube by the way!

Children in school will be striving to show the key learning behaviour of resilience time and again this term, whether it is in a maths lesson, at break or in the dinner hall. We hope that by living out the value of faith and nurturing values of truth, humility and service, we can grow the whole child in every child such that every child shines leading to capable, confident and curious young people.

Learning is a risky business. Believing in yourself, recognising resilience in one another and being ready to accept one is not there *yet* are all crucial in a learning community. Through the spring and the mysteries of Easter we will be aiming high, working hard and remembering that excellence is never an accident and that ultimately, with faith in ourselves and one another, we can.

**Mr. Higgs—Head Teacher**

## West Berks Ballet School

We start our new dancing term with many congratulations to our Grade 2, 3 & 4 ballet students who all passed their exams, just before Christmas, with flying colours.

In November we entered eight dancers for the National Cecchetti Classical Ballet awards in London and our lovely Lucy was runner up in the Senior Section! And the icing on the cake came this week when we heard James has been awarded a place in the boys Cecchetti Young Associates Scheme.

Our fast-growing Musical Theatre department is in full rehearsal mode for their exciting production of Shrek the Musical, to be held over three 7pm performances at the Upper Bucklebury Memorial Hall from 23<sup>rd</sup>-25<sup>th</sup> May. Do email Claire for tickets ([cbowden1602@gmail.com](mailto:cbowden1602@gmail.com)) – it's such a good show with brilliant lyrics and dance numbers, and suitable for all ages.

As you will see, we did have several visits from the man in red, complete with sack, and our younger dancers were

delighted to show him what they had been learning.

Gemma's Saturday morning Petites' ballet, in the Oak Room, is filling up fast with 13 dancers this term – we think we shall be pushing the bigger ones out of the Main Hall soon.

Lucie is finally going to be able to hold our long overdue Cup Classes towards the end of this term. This is a great opportunity for our ballet students to show their performance talents before an invited audience and adjudicator. There are a number of Cups and Awards on offer which have been part of the school since 1975. We have a Junior Section for Grades 4 & 5 and a Senior group for Grade 6, Intermediate Foundation and Advanced 1 – something to look forward to in the Spring.

Very best wishes for 2023.

**Jane**

### New WBBS contact details

Musical Theatre & Tap - Claire: [cbowden1602@gmail.com](mailto:cbowden1602@gmail.com)

Ballet - Lucie: [wbbsslucie@gmail.com](mailto:wbbsslucie@gmail.com)



WBBS celebrating Christmas.

## Ukrainian Families in Bucklebury

Russia invaded Ukraine on 24<sup>th</sup> February 2022 bringing the terrible consequences that we have all seen for all Ukrainians, children and the elderly, innocent civilians. Eight refugee families, among millions, have escaped the war to the safety of our peaceful rural parish alone.

We would like to thank the host families from every corner of the parish who have opened their homes in this time of need. We have formed local groups for hosts and guests that have provided valuable support for transport, shopping, English language courses and socially. Whilst most of our guests dream of returning to Ukraine to rebuild their country and being reunited with their families, the chances of this happening in the coming months are small.

Our families have arrived under the Homes for Ukraine visa scheme through sponsorship with named people in the parish with some coming under the UK Family Scheme that enables Ukrainian applicants to join family members. There remains a real need for new hosts and so, if anyone has a property, an annex or space in their house and wishes to become a sponsor, there are several good national matching organisations, including Opora and Reset. Local advice is available from West Berkshire Council: <https://westberks.gov.uk/ukraine> and I would also be happy to help on behalf of the Parish Council.

Finally, I would like to give a special thank you to our local parish clubs and organisations who have given help that has been 'above and beyond' and for which we are all very grateful: the Bucklebury Community Bus trustees, our local volunteer drivers, Bucklebury Primary School, St Martin's Club, Bucklebury Tennis Club, Bucklebury Farm Park, Janine Ford Therapies and our parish churches.

**Cllr. Michael Morgan**

## 2nd Bradfield Brownies

Wow, I can't quite believe that we are now in 2023. We have got an exciting term planned which will include celebrating the Chinese New Year, making monuments out of junk as well as having a go at Archery and doing the low ropes course at Thirtover in Cold Ash.

Second Bradfield Brownies is going from strength to strength and we now have a full unit of 24 girls. If anyone wishes to join our waiting list please go to our website (details below) and add your daughter's details. Girls in Brownies have incredible experiences together, make brilliant friends and discover the world around them. Every time they meet up, groups of Brownies learn new skills and take on challenges as they work out what they want to be and do in the future.

Although we are looking forward to a new year, it is also time to reflect on 2022 and what we got up to. It was very busy for us what with discovering new games, we had a go at edible architecture, taste testing and painting with foam – that was a messy one! In the summer, we planted some bean seeds for our Grown your Own badge, learnt about first aid, went grass sledging and for a walk in the woods. We finished that term with a trip on the Kennet and Avon canal on a narrowboat. We also attended the District Camp Fire and met up with Brownies and Rainbows from our area.

The winter term saw us completing our Be Well Theme Award. We also visited the Reading Climbing Centre which the girls absolutely loved.

The activities that we complete are all part of the Brownie Programme and lead to the girls gaining Skills Builder badges. We also complete the activities that are required to gain Theme Awards, although the girls are required to complete an interest badge independently to complete this. We are very excited that we now have three Brownies who have completed their Bronze award which means they have completed two Theme Awards. They are all on their way to completing the Silver Award next.

In February we are hoping to take part in the South West Region Thinking Day event which is held online and allows our Brownies to complete activities with Brownies from Jersey, Guernsey, Hampshire and the rest of the region.

If your daughter is interested in joining please visit the Girl Guiding website at [www.girlguiding.org](http://www.girlguiding.org) to register.

**Vicki Beesley (Tigger)**

## Organisations

### Bucklebury and Marlston Horticultural Society

Our “come-back” year turned out to be a great success, with Three successful Shows at our new Victory Room location, and well attended meetings in the Memorial Hall. However the outings were not popular, with only a few members taking advantage of free entry to the best garden in the World. As an Affiliated Society we are allowed one free visit a year to the RHS Gardens at Wisley, but we rarely take our full allocation of 50 tickets. Only a dozen members booked for the coach trip to Sheffield Park, which was an insufficient number to make it viable. Perhaps there is a reluctance to make such trips with Covid still hanging around. Next year we will stay closer to home with a summer visit to Bourton House Garden in the Cotswolds. The year ended with a very sociable AGM. It was a very jolly evening which inspired four members to join our committee. The first of three evening meetings in the Memorial Hall is not until Friday 24<sup>th</sup> February, when Andy Kempe will explore the recent history of Greenham Common. The new pink schedule is in circulation and members will find all the details of our 2023 programme within its pages.

Our Spring Show (**Sunday 2nd April**) will again be in The Victory Room and we hope for a repeat of last year's success. There is no charge, and entries can be staged between 12.30 and 1.30. After judging visitors can view the display and enjoy the fragrance of spring flowers from 2.30pm until 4pm. Entry is also free and refreshments will be available. **THIS YEAR ALL OUR SHOWS WILL BE STAGED IN THE VICTORY ROOM.**

The next outing is to the RHS Gardens at Wisley, **NO COACH**, but you can travel in your own transport for **FREE!** Assemble at All Saint's Church, Upper Bucklebury, at **9am on Saturday 17th June** for final briefing and dispatch. You can bring friends, family and a picnic, but no dogs. Once inside you will be left to do your own thing and return as you and your passengers wish.

The Summer Show will be on **Saturday 8<sup>th</sup> July**, and our Autumn Show on **Saturday 9<sup>th</sup> September**. Full details are in the schedule; take a look to see if you can manage to produce something, especially children's (or grand children's) entries which have been very sparse in recent years. Visitors are welcome to the hall during the afternoon (2.00-4.00pm). There is no charge to see all the wonderful exhibits.

The renamed Century Club has kept us financially afloat during the pandemic, and helps to keep subscriptions low. Draws are monthly and the annual fee is £12.00. If you would like further details, please contact Margaret Grannum on 0118 9713944.

New members are always welcome, bring a friend or neighbour to any of our events. If you feel you have the energy to improve the Society, why not join our small and friendly committee? Contact John Wright (01635 863429).

#### Happy Gardening.

Derek Matthews (0118 9712587)

### Enharmonic Ends with Hallelujah!

For 12 wonderful years on Wednesday evenings, we have gathered with musical friends and sung, eaten and laughed together! December 11<sup>th</sup> “Messiah and More in an Hour” was our final performance.

St. Mary's Church, Bucklebury was full to bursting with audience standing and some even sitting behind the choir as there was nowhere else to go! We had lots of food and mulled wine and the atmosphere was amazing!



The Enharmonic Choir in St. Mary's Church.

We would like to thank everyone who came along and especially Bradfield Primary School who joined us (along with many other young people who wanted to sing) for our final “Hallelujah”. It was the most wonderful evening and one to cherish and the collection for the church raised £685.

A fantastic sum and a fantastic end!

Sandra Nicholls

## St. Martin's Club

January sees the start of a new year for St Martin's Club after a very successful 2022. We began in June with a Jubilee Tea held at the Mercure West Grange Hotel, Midgham and then had a full calendar of trips to Gilbert White's house, Bletchley Park and Westonbirt Arboretum. November saw us back in The Memorial Hall for a really interesting talk by Fred Davison on Gertrude Bacon, aeronautical Pioneer, astronomer, botanist and author who lived in Cold Ash. In December the Christmas Lunch was well attended by around 60 people – again held at the Mercure Hotel.

We held our AGM in January, which was attended by over 60 people. A new programme of talks and trips has been organised beginning with a talk by Andy Kempe on Greenham Common in February and an update on The West Berkshire Hospital by Dr Rob Tayton in March. An afternoon Tea will be held in April and the trips begin again in May.

Please contact me if you would like more information or would like to be put on the waiting list.

**Helen Relf, 01635 867619 [grannyrelf@btinternet.com](mailto:grannyrelf@btinternet.com)**

## Bucklebury Walkers

We are a mixed group of walkers who meet on the first Thursday of each month at 10.00 a.m. and walk for about 3 – 4 miles and we now also organise a shorter walk leaving at 10.30 and walking for about 2 miles. We then meet back at the venue for coffee (or go back to The Cottage Inn, where we also enjoy a lunch). You are welcome to join either group.

Thirty members enjoyed a Christmas meal at The Cottage Inn in December. A fun evening and our thanks go to Gary, Nigel, Kimberley and rest of the team for an excellent meal and service.

Please contact me for more details or just turn up at any of the walks – the diary is in The Oaks and on the village website.

Please note that these are social walks and you are responsible for your own safety.

**Helen Relf,  
01636 867619. [grannyrelf@btinternet.com](mailto:grannyrelf@btinternet.com)**

## Plans to Celebrate The King's Coronation May 6th 2023

Gary at the Cottage Inn and the Bucklebury Events Committee plan to host a celebration on the afternoon and evening of the Coronation, culminating in the lighting of the beacon.

All parishioners are welcome. Please look out for further updates.

If you'd like to help please contact Gary or Wynne Frankum at [rwfrankum@outlook.com](mailto:rwfrankum@outlook.com) or 01635 863372

Bucklebury History Group will be putting on an exhibition in the Victory Room on the weekend of the Coronation.

If you have any memorabilia or photographs from previous coronations you would be happy to lend, please contact Wynne Frankum: [rwfrankum@outlook.com](mailto:rwfrankum@outlook.com) or 01635 863372.

All contributions must be securely labelled with your name and contact details.

We look forward to a great exhibition. Look out for more details later.

**Wynne Frankum**

## Bucklebury History Group

We had another successful evening in November when Sarah Somerville, Visitor Services Officer at Shaw House, came and gave a very interesting talk on the history of Shaw House. She is a very enthusiastic speaker and certainly knows her subject.

We will be organising more speakers this year but as yet have none planned. Please let me know if there is a subject in which you are interested or know of an interesting speaker.

Please also let me know if you would like to help with organising all the items I have that need putting into some sort of order!

**Helen Relf, 01635 867619 [grannyrelf@btinternet.com](mailto:grannyrelf@btinternet.com)**

## A request

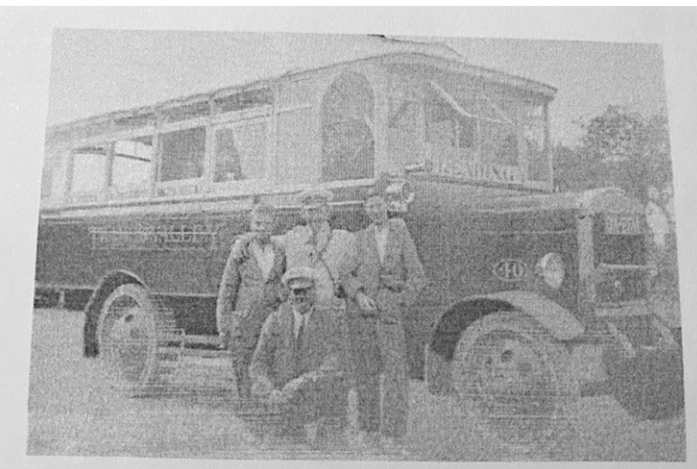
We have been contacted by Paul Lacey, details below, who is trying to trace the owner of the photo which appeared in Bucklebury In Focus published for the millennium. The picture is of a Thames Valley bus outside The Bladebone, which was a terminus for the buses going from Reading to Newbury. The picture is on page 58 and if anyone has the original then please get in touch with Paul and The History Group.

The main persons in the photo were the regular crew of the Thames Valley bus which was kept in a small garage adjacent to the Blade Bone Inn, Archie Lock and Bert Sawyer. Both men were awarded a medal for averting a dangerous roll-back accident, so were well known local men, and Paul is currently preparing an article about them and Thames Valley at that location, so would appreciate either the loan of a print, or a good quality scan of the photo to use with that.



Anyone who can help can contact Paul on this email address [paul.lacey17@btinternet.com](mailto:paul.lacey17@btinternet.com) and please copy me in as well [grannyrelf@btinternet.com](mailto:grannyrelf@btinternet.com)  
Thank you.

**Helen Relf. Bucklebury History Group**



Another picture of the same bus

## Tuesday Ladies' Club (TLC)



Another varied programme is planned for this year, from a puzzle and plonk evening to wide ranging talks and a visit to The Pottery at Bradfield on June 13th. We meet on the 2<sup>nd</sup> Tuesday in the month in the Oak Room of the Memorial Hall at 7-15. There is no membership fee, just £3.00 per session. New members are always welcome, just come along.

**Wynne Frankum**



## Highland Ceilidh

At the Victory Room, Bucklebury Village

Saturday 18<sup>th</sup> February 2023

7.30pm start

Tickets £15 per head (1/2 Price under 12)

St Andrews Scottish Dancers and music by

Mandy Shora

3 course supper of

Haggis, tatties and neeps

Lasagne and salad

homemade dessert

A wee Dram

Raffle

To reserve your tickets please contact

Julie or John Brims on 0118 9713308 or email to

[buckleburyvictoryroom@gmail.com](mailto:buckleburyvictoryroom@gmail.com)



## Halls

### The Victory Room

The Victory Room will once again be holding a Ceilidh, this time on **Saturday the 18th February at 7.30pm**. We will have a caller and dancers from the St Andrews Scottish Dancers to demonstrate simple (supposedly!) Scottish dances. Amanda Shora will entertain you with Scottish songs.



There will be a wee dram with a taste of haggis, tatties and neeps, followed by lasagne and salad and home made puddings, all for **£15 a head**. Bring your own drinks and glasses. Wear your Scottish gear if you have any, and come prepared for a lively evening of dancing and fun in our spacious new hall. Tickets from John and Julie Brims on 01189 713308 or email [buckleburyvictoryroom@gmail.com](mailto:buckleburyvictoryroom@gmail.com)

We plan to hold two more events this year, the Beerfest on Saturday 26<sup>th</sup> August if there is no Chapel Row Fayre and a quiz evening in October or November.

The Victory Room AGM will be held on Thursday 9<sup>th</sup> February at 7.30 in the Remembrance Room; everyone is welcome to attend. We completed our first year following the re-opening of the hall with a 75% increase in pre-pandemic lettings income.

Our new Website and booking system is going live in January and can be found at [buckleburyvictoryroom.com](http://buckleburyvictoryroom.com). The system is being provided by Lemon Booking and will show a calendar of availability and allow bookings to be requested online. It will have details of users of the Activities at the hall and links to other websites.

**John Brims**  
**Chair of the Trustees of the Victory Room**  
**0118 9713308 or 07799 348451**  
[jbrims@outlook.com](mailto:jbrims@outlook.com)

## Country Life

### Commoners Rights and The Bucklebury Commoners Association

The Commoners of Bucklebury have enjoyed the rights on Common land for a considerable time and hopefully many of us will continue to upkeep this valuable resource.

The Bucklebury Commoners Association (BCA) was formed in 1965 as a direct result of the requirement to register, and therefore protect all those with holding and ancient rights, that resulted from the Commons Registration Act, 1965 and the subsequent Commons Commissioners Regulations, 1971. The other factor, which has now been largely forgotten, is that Bradfield District Council which regulated the Common after 1929, failed to include a list of Commoners Rights although it protected the right of the Lord of the Manor and the Commoners. The Commons Registration Act 1965 corrected this oversight.

We will be forever indebted to Air Commodore J. H. D. Ker and the Association, the Farmers Union and the Commons Preservation Society (Mr. Humfrey Baker MA.), for their assistance in ensuring these ancient rights and tenures were preserved, as if they were not registered, they would have been lost forever.

This included the three Commons in the parish; Bucklebury, Westrop Green and Bushnells Green which amounted to approximately 320 Hectares (800 Acres). The registration period started on 1<sup>st</sup> January 1966, and they were approved to 126 holdings (properties) in Bucklebury on 27<sup>th</sup> July 1979. This confirmed their rights, including the number and type of livestock that were allowed to graze the Common.

So what are these rights? Basically, these fall into five categories although only three are relevant:

- **Common of Pasture**, this is the right to turn-out livestock including; horses, cattle, sheep, pigs, goats, ducks and hens all of which are commonable. The allocation of grazing rights was proportionate to the number of outbuildings that could accommodate and support the livestock during the winter months. In the allocation of grazing rights, it should be noted the

number of horses, cattle and sheep was limited to the holdings ability to maintain and support these animals during winter.

- **Common of Estovers**, this is the right to cut or take wood for the purpose of domestic heating. Wood could also be taken for the repair of buildings and fences. This is the most widely used right that is still upheld by Commoners. The Common of Estovers also includes the practice of cutting heather and bracken for litter and furze (gorse) and brushwood. The Commoners also have the right to lop and top trees felled by the Lord of the Manor. As this is still very prevalent, the actual wording is thus, "the right to take timber for repairs, to top all the pollards which have been usually topped, to have hedgebote and firebote and to take furze and bracken".
- **Common of Turbary**, this is the right to cut and dig turf but there is no evidence to suggest that this was ever implemented in Bucklebury, so currently this is not relevant.
- **Common of Piscary**, this is the right to take fish from rivers, ponds and streams. No reference has been found to support this right on the Court Rolls.
- **Common in the Soil**, this is the right to take stone and gravel to maintain and repair paths leading to Commoners holdings. This was an ancient right and the Steward at the Court Leet put an end to this practice in 1928. The extraction of water for drinking and for livestock is covered under this right and water can be drawn from springs and ponds on the Common. Blind Johns Spring has recently been restored but currently an analysis of the water has yet to be taken.

The Commoners that had registered their rights were issued with a cast plaque. I can clearly remember as a boy being asked to paint the casting for my grandparents and neighbours. Before long it seemed, everyone was asking if I could paint their plaques. It is a real testimony to the quality of the castings and the lead in original Humbrol (modelling) paint that many are still in good condition after 43 years. The chances are that if you own a plaque with a white background, black edge and lettering with a green leaf, this is one of my originals. If they need retouching, I still have some of my original paint!

### **Court Leet** - sometimes referred to as the **Court Baron**

This was an ancient court that was setup to oversee the management of the Common and to prevent the illegal encroachment and could only be convened by the Lord of the Manor. However, it is very important to note that any Commoner who has reason to register a complaint with the Lord of the Manor would result in the Court being convened.

Originally the court used to take place at the Manor House but up until the 1960s it resided in a room at The Bladebone. The court took place every three years although previously there had been an annual meeting to resolve issues arising from Commoners Rights. It was presided over by the Steward of the Manor, (the current office occupied by Alasdair Jones-Perrott) and up to four experienced members of the parish and, in the case of a dispute, a jury of ten to twenty "Commoners".

Interestingly the court appointed various officers: the Bailiff (to assign timber for repairs); two Tythingmen (to oversee the finances, fines etc.); and Haywards (to oversee that Rights were not abused and to collect stray livestock which were impounded in two pounds, one in the Slade near Haycroft and the other in the remaining pound that can be found adjacent to Brown's Gate).

The BCA agreed that with the suspension of the Court Leet a Commons Advisory Committee should be setup which should include two Commoners on the Committee.

### **Terms**

Tythingmen - officer appointed to collect tithes and act as constables to keep the peace. This is similar to the Hungerford Tuttimen but currently we can find no record of a court being held at Hocktide.

firebote (fyrbote, fyerbote) – (1325) the right of a tenant to take from the land occupied by him a reasonable amount of wood for maintaining fires in his house and in the houses of his servants, the wood or fuel used for this purpose.

hedgebote (haybote, haibote) – (1260) the right of a tenant or commoner to take woods and thorn from the lord's land to repair hedges and fences.

**Cllr. Jason Allum.**

## Bucklebury Estate

Bucklebury Estate in partnership with the North Wessex Downs AONB are undertaking maintenance and enhancement of the rare heathland on the Common south of Broad Lane. Mechanical works commenced during December with a focus on removing volunteer Silver Birch.



Excavator removing birch saplings on the Lower Common.

In addition you may well have noticed the restoration of four ponds, two at The Slade, one at Chapel Row and one near Acres Farm off the Avenue; these works have been supported by the Newt Conservation Partnership. These initial projects form part of the Estate's vision for sustainable environmental enhancement which will be undertaken sympathetically over the coming years.

**Alasdair Jones-Perrot**  
Steward of the Manor,  
Bucklebury Estate



## Bucklebury Common Update

Heathland management is underway at Bucklebury Common, with keen volunteers and a local contractor using an excavator to remove invading Silver Birch saplings. The resulting small patches of bare gravel will be great for basking reptiles, nesting solitary bees and foraging birds. This work is funded by the North Wessex Downs AONB 'Farming in the Protected Landscape' grant scheme.

All the ponds restored by the Newt Conservation Partnership have filled up with water, so plants and animals will start to colonise naturally through the year.



Pond restoration in The Slade.

Residents with commoners' rights have been invited to a meeting to reform the Bucklebury Commoners Association. If you have commoners' rights, but have not been contacted about this, please email [alex@sundewecology.co.uk](mailto:alex@sundewecology.co.uk)

The online 'information hub' is kept up to date with what's happening on the common. It has been updated so you can now subscribe and receive any news as it arrives: [www.sundewecology.co.uk/bucklebury-common](http://www.sundewecology.co.uk/bucklebury-common)

**Alex Cruickshank — Sundew Ecology.**



Chapel Row Pond restored.

## **Bucklebury Parish Council**

# **Common Clearing and Parish Litter Pick**

Come to help clear litter from the paths  
of **Bucklebury**

**Saturday 25<sup>th</sup> March 2023**

**Meet Bucklebury Memorial Hall**

**2.00pm**

Equipment will be provided

SKIP at the Memorial Hall

Free refreshments afterwards

**“Keep Bucklebury Beautiful”**

## **West Berkshire Countryside Society**

*The events below give you the opportunity to come out on practical tasks, learn new skills, meet new people and, above all, enjoy yourself. The tasks usually begin around 10am and finish by 3pm but you are very welcome to come for as much time as you wish to give during these hours. Please wear suitable footwear, clothing and gloves, and bring water, hot drinks and a packed lunch if you are coming for the full day. All the necessary tools will be provided.*

(The three word code after each grid reference is the “What Three Words” listing for the task meeting point).

### **Tue 31st Jan 10:00 Hockett Field Bucklebury**

Continuing earlier work along hedge line. Park on the hard standing at SU548 687. Nearest postcode: RG7 6RY  
blurs.paraded.producing"

### **Sat 11th Feb 10.30am-1.00pm Bucklebury Common**

Join the Bucklebury Heathland Group to help maintain this important heathland habitat. Meet at Angels Corner SU 550 688offices.bucked.tradition

### **Sun 19th Feb 10:30am A Winter Walk with Charles Gilchrist**

Join Charles for a 4 mile walk around Hermitage parish. Meet at the car park on Everington Lane at SU519 737 ranged.hunk.shrugging. Expect to see ancient tracks and coppiced trees, water meadows, a rebuilt C13th church and unusual railway-style farm buildings.

### **Sun 12th March 10.30am-1.00pm Bucklebury Common**

Join the Bucklebury Heathland Group to help maintain this important heathland habitat. Meet at Angels Corner SU 550 688 offices.bucked.tradition

### **Tue-21st March 10:00Rushall Manor Farm**

Hedge work Parking SU584 723telephone.brink.crate

## H.V. Morton on Bucklebury in “In Search of England”

*In 1927 the writer H.V. Morton, wrote **IN SEARCH OF ENGLAND**, and begins Chapter One with these words – “I go in search of England. Describes how I leave the place where London ends, **meet a bowl-turner**, stand beneath a gallows on a hill, enter Winchester, accept the wanderer’s dole at St Cross, and ends quite properly, with a maiden in distress.”*

*Then on page 7 he describes how he came to green Berkshire and went on until he came “to a little lane with a bend in the middle that seemed to say ‘I dare you’. “This looks good!” I said.*

The cart tracks were full of water and the lane led up to a hill; and the earth of this lane was the colour of amber. At the top of the lane was **Bucklebury Common** aflame with gorse. Tall trees stood up from this gorse, making lovely green patterns against a windy sky.”

*Morton goes on to say that as he was trying to decide which way to go he met a man carrying a wooden bowl who said that it was the work of the last bowl turner in England and he lived over the hill in Bucklebury and that Morton should look at his workshop, for he would never see another one like it!*

“I had a suspicion when first I saw him that this stranger was an antiquary, and when he proceeded to deliver a lecture on ‘treen’, standing there with his feet in a puddle, I knew it for certain.

A sharp shower of rain interrupted him and he went on his way and I in search of the last ‘treen’ man.

The gorse flung itself in a sheet of flame across Bucklebury Common, and the birds were singing like made in the rain.

I would not care to be the postman at Bucklebury. The cottages hide one from the other; the hamlet is spread generously over little hillocks.”

“I came to a tumbledown hut on a green knoll. Enormous elm logs stood piled outside the door; inside a man was sharpening a long knife on a whetstone. He glanced up and admitted that his name was William Lailey. He looked to me like a shy, middle-aged fawn. His cheeks were red, and his healthy country face was shaded by a floppy green hat. He asked me in, and went on sharpening his knife, his back towards me, an attitude which delighted me because it was, from him, so sincere; his knife meant more to him than I did, and he was – I looked at his hands – a craftsman.”

“No, there wasn’t much to see next door, where he worked, but he’d show me! Yes, he loved making bowls better than

anything! He never felt happier than when he was holding a good bit of elm to the lathe! His father taught him to make ‘treen’ and his grandfather taught his father; and so it went back to goodness knows where.

“He opened up the door to his workshop. To say that eight hundred years seemed to have stopped at the door conveys nothing. The room was an Anglo-Saxon workshop! It seemed, at first sight, that Heath Robinson had fitted it up with all manner of pulleys and strings. The floor was deep in soft elm shavings, and across the hut was bent a young alder sapling connected to a primitive lathe by a leather thong.

‘No other kind of lathe will do’ explained William Lailey, stepping down into a wicker-work pen. ‘The sapling takes the strain. You watch! I’m going to turn an elm bowl.’

He picked up a chunk of wood and, putting it to the lathe, worked a foot pedal and held a sharp knife to the outer shape of the bowl; then, taking a different knife, he cut out the inside as you might cut the inside of a turnip. The bowl was roughly finished. ‘It wants titivating up, of course’ he explained, ‘and the inside will make another smaller bowl.’

The alder sapling sprang back, vibrating; a clumsy, primitive, marvellously efficient invention, and in it – and many more now lost to us – the secret of those beautiful handicrafts of antiquity which remain to astonish us and to confound our modern machinists.”

*Morton saw a pile of beautifully turned bowl of all sizes – each bowl had the individuality which only a man’s hands can give an object.*

“‘You could make a lot of money if you wanted to’, I told him. ‘Money,’ he said with a slow faun-like smile. ‘Money’s only storing up trouble, I think. I like making bowls better than I like making money.’

‘Will you say that again?’

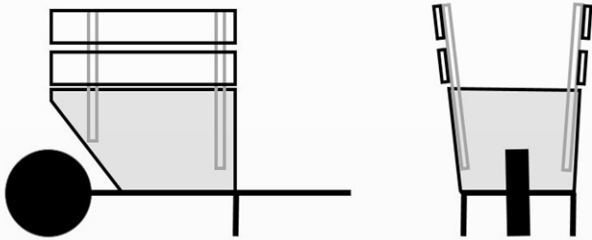
He leaned against the door of the hut, his homely brown face shaded by his green floppy hat, and said it again, slightly puzzled, and feeling, I think, that I was in some way ‘getting at him’. But you will have guessed that I wished to hear for the second time the voice of the craftsman, the lover of his job, the proud creator of beautiful, common things; a voice that is now smothered by the scream of machines.

I went on down the green hill feeling that my search of England had started well.”

**From: In Search of England by H.V. Morton.  
Published by Methuen & Co. Ltd.**

## Greedy Barrow

Have you found your wheel barrow capacity is too small for the load so you have to make multiple trips for material such as grass trimmings, fallen leaves and tree prunings. I remembered car trailers manufacturers offering 'greedy board' accessories to increase the volumetric capacity by vertically extending the sides. I have made the same for my wheel barrow using scrap wood from a pallet and have found it doubles the volume capacity of my wheel barrow.



Construction is two uprights and two cross members screwed together (but could also be two flat boards) for either side of the wheel barrow. When the barrow is full you push the greedy boards down either side and so double the load volume capacity. As the centre of gravity is raised you do need to ensure this technique is limited to moving light materials – this will also avoid damaging the wheel barrow and the operator.

Once unloaded they can be pulled out and my boards sit across the wheel barrow handles so they are available when next needed. If you need any advice in constructing these please contact [david@sogat.net](mailto:david@sogat.net)

**Cllr. David Southgate**



Wheel Barrow with greedy boards

## Keeping warm!

I recently ran out of kindling and found my log pile was full of very knotty logs that don't split easily. Whilst crumpled newspaper and kindling is probably the standard method to light a log fire that I have used for decades I remembered back a long time ago of using newspaper alone and found that it still works well. The principle is simple: roll sheets of newspaper to make  $\frac{3}{4}$  to 1 inch diameter tubes and then put a simple knot in the middle to stop them unrolling. Tabloid sheet size is ideal. Lie about 8 of them in the hearth as a bed and put smaller sized logs across on top at 90 degrees and inclined towards the back of the hearth if possible. The greater the surface area of the logs, the harder it can be for log to catch alight, meaning that larger sized logs can be even harder to light than smaller ones. Light either end and you should have a fire going in no time.

Having now done a bit of web surfing (e.g. <https://logwisefirewood.co.uk/alternatives-to-kindling/>) on the subject other listed techniques include the use of dry pinecones, potato crisps, stripped tree bark off the log pile, pine needles or tinder such as sticks, twigs, and dried leaves as alternatives to kindling. I think I will however stick to newspaper or newspaper/kindling in the future.

An alternative approach without kindling is building a fire using the top-down method. The top-down method of building a fire is essentially a reversed way of stacking the materials in your fireplace. Instead of placing your fire starter such as newspaper at the base of the fire, when building a top-down fire the logs are placed in the fireplace first, followed by the kindling and then the fire starter. Building a conventional fire without kindling can cause the fire to be smothered by the logs located on top soon into a fire. When building a top-down fire, the fire is started at the top and so there's a lower chance for the fire to go out before the logs are able to catch.

To build a fire using the top-down method (without kindling): place a layer of smaller sized logs at the base of the fireplace; lay another layer of smaller logs on top, but at 90-degree angle to the way the logs below are facing; put your fire starter, such as newspaper, on top of the logs.

The ash from a log fire can be very useful in the garden.

You should always check your fire's operating instructions first before trying alternative techniques.

**Cllr. David Southgate.**

## Sports

### Bucklebury Tennis Club [www.buckleburytennisclub.com](http://www.buckleburytennisclub.com)

Bucklebury Tennis Club continues to flourish for recreational play, drills, junior coaching and competitions.

#### Drills:

Drills with our Coach Damian Lane, continue to be very popular with sessions on a Monday and Thursday evening. For further details contact: Karen Pegg: [kppegg61@gmail.com](mailto:kppegg61@gmail.com)

#### Junior Coaching:

Junior Coaching with Josh Lawson will resume for the Summer Term 2023:

For further details contact our Junior Co-ordinator: Karen Pegg: [kppegg61@gmail.com](mailto:kppegg61@gmail.com)

#### Competition:

League Tennis

Bucklebury Tennis Club have teams in the Newbury and District Leagues Winter 2022-2023. Bucklebury Tennis Club also have a Ladies Doubles Team in the Berkshire Leagues.

Summer Tennis will soon be upon us with teams once again entered into the NDLTA and Berkshire Leagues.

Our thanks must go to all the Captains and Team Members.

If anyone is interested in playing for any of our teams please do not hesitate to contact me:

Robin London: [robinlondon145@gmail.com](mailto:robinlondon145@gmail.com)

#### Club Membership:

New members and visitors are most welcome. There is plenty of opportunity to play - Mens Mornings; Club Nights; League matches (both Newbury and Berkshire); Social tennis. Visitors or non-members can play on a pay and play basis.

Details regarding membership and visitors are on the website: [www.buckleburytennisclub.com](http://www.buckleburytennisclub.com)

Please contact our Membership Secretary, Norman Casson: [normancasson@aol.com](mailto:normancasson@aol.com) if you would like to join or there are any queries.

Robin London: [robinlondon145@gmail.com](mailto:robinlondon145@gmail.com)  
[www.buckleburytennisclub.com](http://www.buckleburytennisclub.com)

### Bucklebury Badminton Club

The badminton club is thriving. Club night is busy and we have been welcoming several visitors. Our coach, Colin Shurey, offered a free coaching course to 8 adults starting in February. We were inundated with replies and have had to stop advertising it. Apparently there are a lot of adults who want to get into badminton. If you are one of them, please do contact us as we may be offering more free courses later in the year.

In the meantime, we have been playing matches again. The ladies team have also joined the Reading league so there have been a lot more games to play.

In December we went to The Cottage Inn for our Christmas Dinner. There were 30 of us. Gary and the staff served up a delicious meal. "Mother" Christmas made a surprise appearance, helped by her elf.



Mother Christmas and her Elf

Why not make it your new year's resolution to play badminton. Whether you're an experienced club player, returning after a break or a complete beginner, you will be welcome to come as a visitor to our friendly club. You can play for up to six weeks before you commit. If you're already a member of another local club, you can come as a visitor as often as you wish.

VENUE: Elstree School, Woolhampton, RG7 5TD

DAY: every Tuesday 8 to 10 p.m.

COST: £5 for visitors (deducted from subscription which is £120 per annum **pro rata**. £60 for students)

CONTACT: Margaret Neville 01635 873811  
[margaretnev@yahoo.co.uk](mailto:margaretnev@yahoo.co.uk)

WEBSITE: [buckleburybadmintonclub.com](http://buckleburybadmintonclub.com)



## Indoor Carpet Bowls

During last year we managed to keep our regular twice weekly sessions going, on Mondays, with the full complement of eight players, and on Friday afternoons, which were less consistent and we did not always manage to raise the optimum number of folk to keep both lanes in action. Instead we had fun with a three team competition on one lane only. This produced a very competitive battle requiring a lot of “discussions” to agree the closest from up to 12 woods around the jack.

Our regular pool of 20 individuals has recently been joined by several welcome newcomers in both sessions. However two hours of non-stop bowling can be more tiring than you think, so we are looking for more to have as standbys when numbers drop due to other commitments or ill health. So come along and give the game a trial run, it's both a challenge and fun!

For the coming year we will be continuing with our regular weekly schedule of two sessions, and we have arranged bookings in Bucklebury Memorial Hall for the following times:

Every Monday morning at 10.30 a.m. – 12.30 p.m. and  
Every Friday afternoon from 2.00 pm. - 4 p.m.

Charges remain at £2 per head for each two hour session attended to cover the cost of hiring the hall, and all the equipment is provided, but it does need laying out and putting away. We do have a short break mid-session but at the moment we ask all those wanting a cup of coffee or tea to bring their own supplies.

***If you haven't played before come along to try it out,  
EVERY ONE IS WELCOME.***

**Enquiries to: Mike James 0118 971 2285**



## Contributions

Material to appear in The Oaks should be sent neatly typed for scanning or as a word-processor document (e.g. MS Word), attached to an e-mail and sent to “clerk@buckleburyparish.org”. Don't worry about layout as it will be re-formatted to the house-style. Please supply any pictures or artwork as separate files, as they are not usually recoverable from word processor files and don't forget to include captions for the pictures.

**All contributions appertaining to the Parish are very welcome but the Parish Council reserves the right to adapt or omit submissions.**

**The deadline for submissions is the 20th of the month preceeding publication.**

**Barry Dickens**

Published in February, May and October

By Bucklebury Parish Council.

Helen Pratt, Clerk,

Jasmine Cottage, Byles Green, Upper Bucklebury,

Reading. RG7 6SD. Telephone: 01635 863581

E-mail:clerk@buckleburyparish.org

Copyright © Bucklebury Parish Council, 2023

(Printed by The Alpha Xperience, Newbury

Telephone 01635 523240)

Distributed free to all households in Bucklebury Parish,  
and on the web:

<http://buckleburyparish.org>

# Parish Diary Dates

## February

2nd	Bucklebury Walkers	10.00am/10.30am	The Cottage Inn, Upper Bucklebury.
3rd	Question and Answer on Proposed NE Thatcham development	7.00pm	Zoom: <a href="https://us02web.zoom.us/j/86080759155?pwd=L1pPeUt5WlJlVQVZ5am9aUVFtMjFiQT09">https://us02web.zoom.us/j/86080759155?pwd=L1pPeUt5WlJlVQVZ5am9aUVFtMjFiQT09</a>
6th	Bucklebury Parish Council (Extra Ordinary Meeting)	7.45pm	The Victory Room, Bucklebury.
13th	Bucklebury Parish Council	7.45pm	The Victory Room, Bucklebury.
23rd	Community Coffee Morning	10.30am	The Oak Room, Upper Bucklebury.
24th	Horticultural Society	8.00pm	The Memorial Hall, Upper Bucklebury.
27th	Bucklebury Planning Committee	7.45pm	The Victory Room, Bucklebury.

## March

2nd	Bucklebury Walkers	10.00am/10.30am	The Cottage Inn, Upper Bucklebury.
13th	Bucklebury Parish Council	7.45pm	The Victory Room, Bucklebury.
17th	Horticultural Society	8.00pm	The Memorial Hall, Upper Bucklebury.
25th	Common Clearing and litter pick	2.00pm	The Oak Room, Upper Bucklebury.
27th	Bucklebury Planning Committee	7.45pm	The Victory Room, Bucklebury.
30th	Community Coffee Morning	10.30am	The Oak Room, Upper Bucklebury.

## April

2nd	Horticultural Society Spring Show	2.30pm to 4.00pm	The Victory Room, Bucklebury.
6th	Bucklebury Walkers	10.00am/10.30am	To be confirmed.
17th	Bucklebury Parish Council	7.45pm	The Victory Room, Bucklebury.
21st	Horticultural Society	8.00pm	The Memorial Hall, Upper Bucklebury.
27th	Community Coffee Morning	10.30am	The Oak Room, Upper Bucklebury.

## May

4th	Bucklebury Walkers	10.00am/10.30am	To be confirmed.
15th	Bucklebury Parish Council	7.45pm	The Victory Room, Bucklebury (Annual Meeting of Council).
19th	Bucklebury Annual Parish Assembly	7.45pm	The Victory Room, Bucklebury.
22nd	Bucklebury Planning Committee	7.45pm	The Victory Room, Bucklebury.
25th	Community Coffee Morning	10.30am	The Oak Room, Upper Bucklebury.