

# Operating Instructions

1. Find a safe location to park to offload the equipment.
2. Wear high vis tabards
3. Move the equipment to a safe area to allow assembly before deployment. Move the items unassembled due to the total weight once fully constructed. If needs to be moved assembled then this is a two person lift.

## Component weights:

- Frame legs 6.1 kg each
- Central Frame with locks 6.6 kg
- Battery 5.4 kg
- SID 8.4 kg in bag
- Security chain with locks 3.5kg

Total assembled weight 36.1 kg

4. Lay the frame out and frame locks out.  
Ensure yellow locks are open.  
Ensure the central frame handle is upwards.





5. Pick up one leg and raise one end of the central frame about 15cm. Offer the leg to the central frame and slide the T section into the bottom cross member. Adjust grip on the leg and slowly move the leg so that it engages into the top cross member and emerges by 5cm. Try to keep in line to avoid bending the frame



6. Move to the second leg and repeat the process. Raising the other end of the central frame about 15cm. Offer the leg to the central frame and slide the T section into the bottom cross member. Adjust grip on the leg and slowly move the leg so that it engages into the top cross member and emerges by 5cm. Try to keep in line to avoid bending the frame

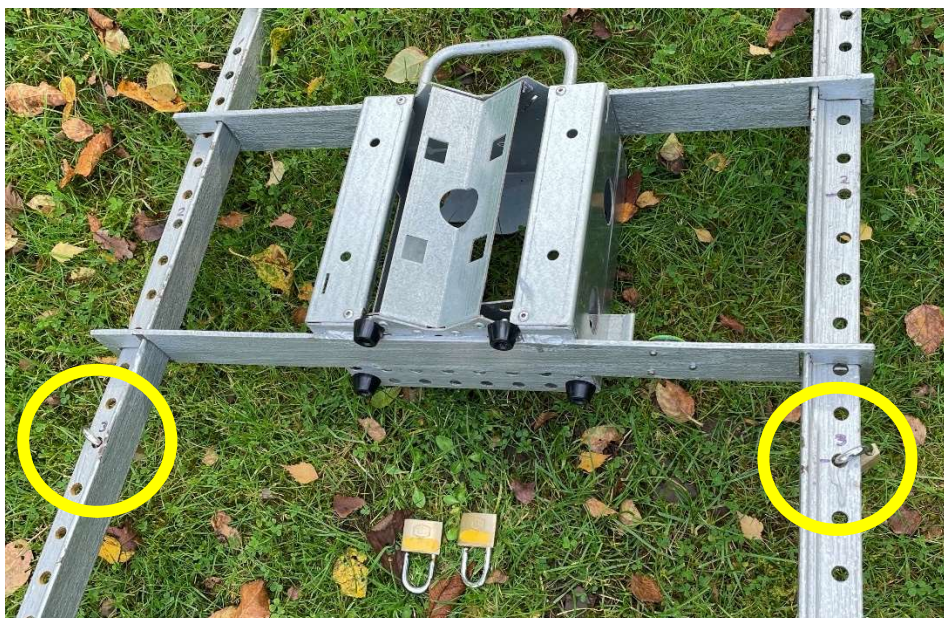




7. Now ensure you have two yellow locks unlocked.

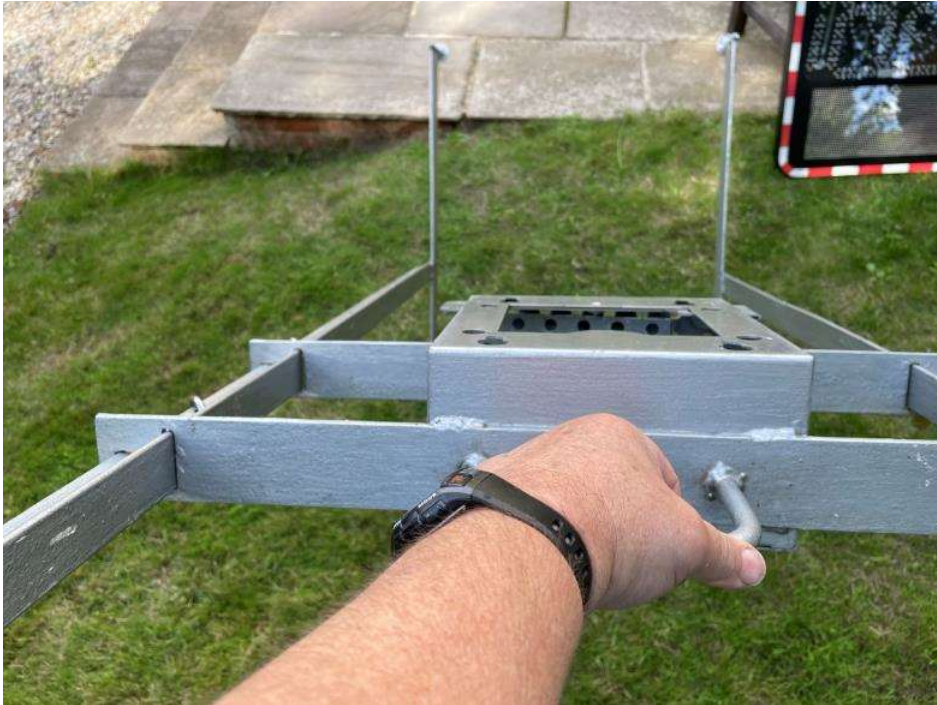


8. Add the locks either side at the same height at a position that reflects the desired height of the central frame. Some holes are numbered to help with this. If you get it wrong you can adjust it later



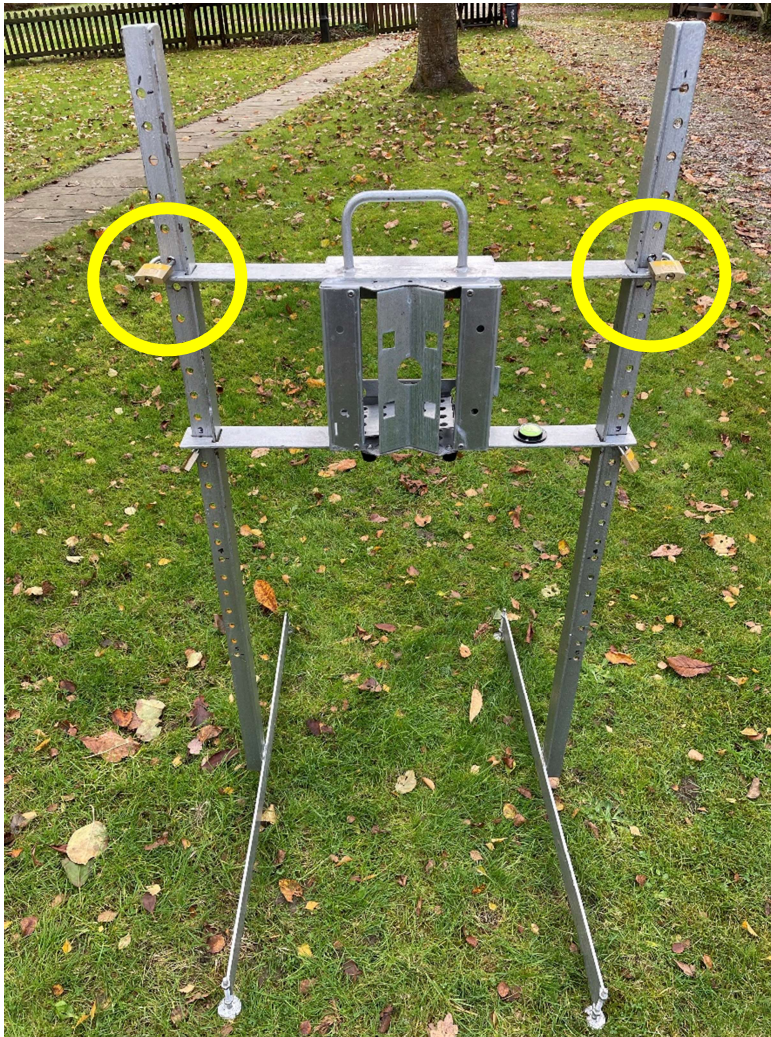


9. Using the handle on the central frame slowly lift the frame to a vertical position allowing the central frame to gently slide down to the yellow locks. This can be done from either side of the frame. Use the feet as a pivot to reduce the weight and only hold the handle to avoid pinching fingers. Take care not to lift the frame out of the legs whilst doing so.





10. Add the second set of yellow locks to retain the central frame



11. Ensure the frame is located in the desired location or walk on its legs if a short distance to position to avoid a direct lift (as configure the stand is very stable free standing if required or can be placed close to a post to allow for a security chain to be fixed).





12. One leg can be adjusted up or down by relocating the padlocks to level the frame.



13. Remove the SID unit from its protective case and remove the white foam lug protector from the back of the unit





14. Note the 4 mounting lugs on the rear of the unit, the hand grips and the power connector



15. Remove the battery locking bar



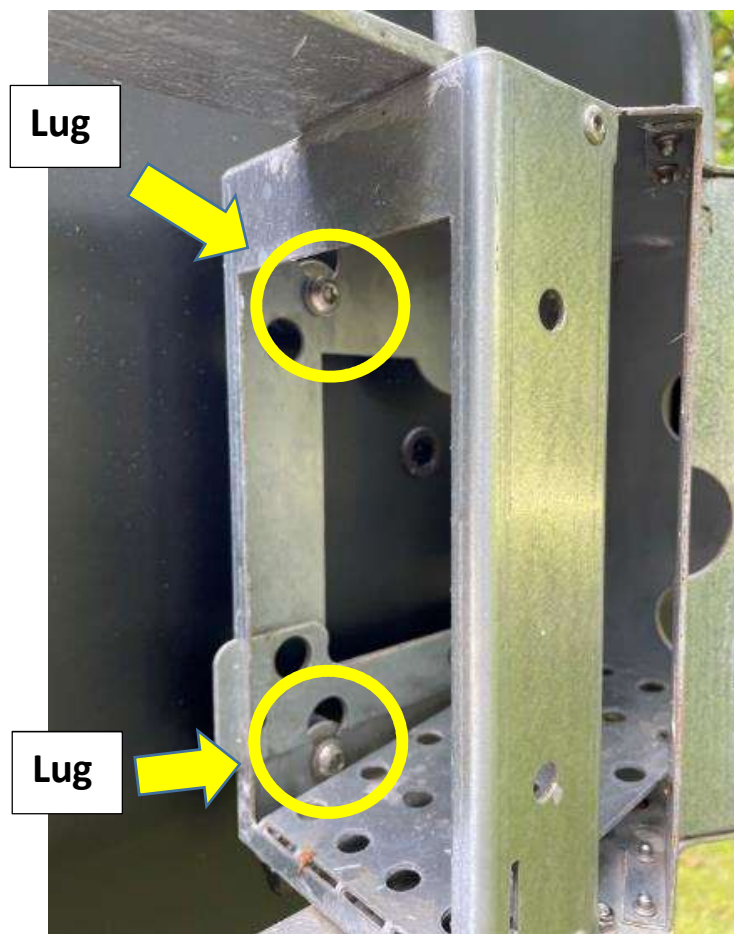


16. From infront of the sign slide the SID locking bar to the left opening up the holes on the frame for the SID lugs

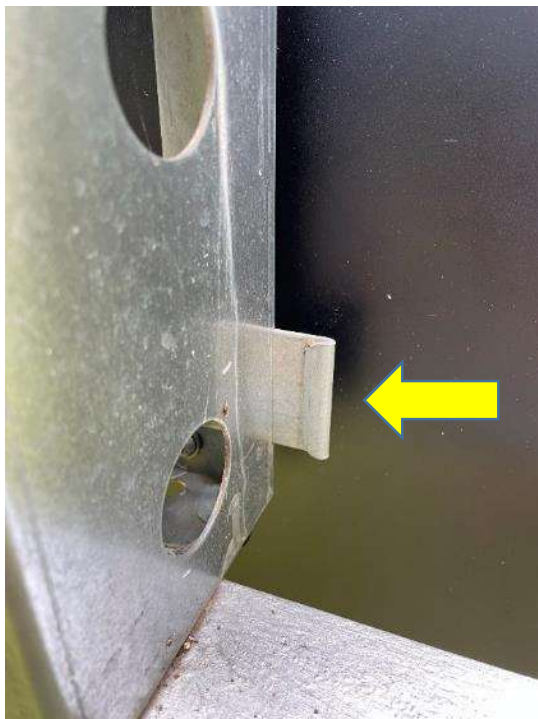




17. Lift the SID and position so that all 4 lugs go into 4 holes on the central frame.



18. From behind the sign slide the SID locking bar to the right locking the holes on the frame on the bottom SID lugs





It should look like this



19. Lift the battery onto the frame and ensure secure. Feed the power cable into the battery box.

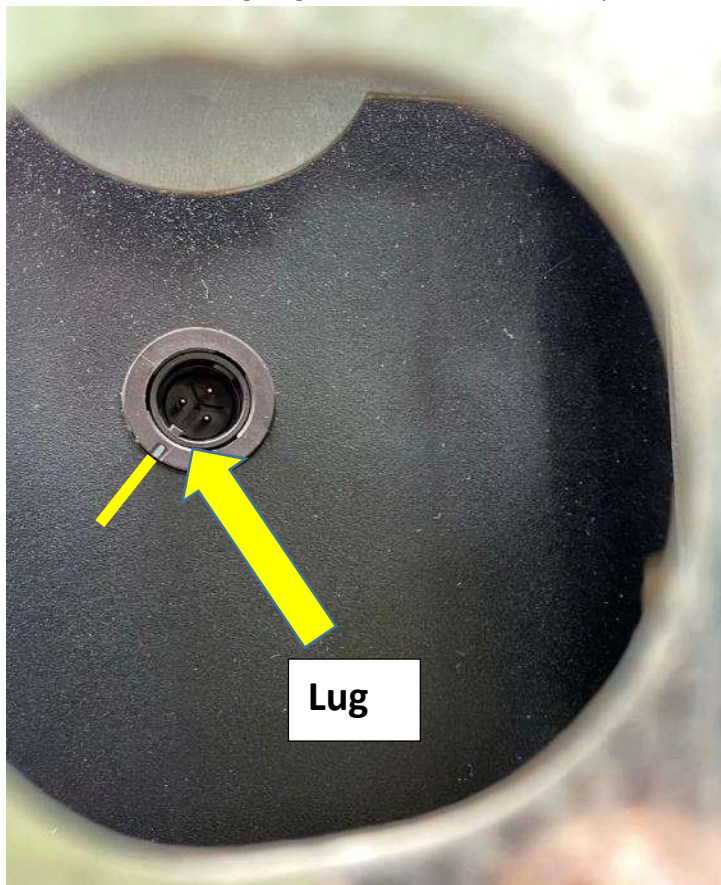




20. Note the power cable has a notch that has to be aligned with the matching lug in the SID power socket. A yellow line marks both locations to help with visibility.



21. Check location of lug to get correct orientation of power connector





22. Connect battery power lead to SID. SID is now live and recording once precheck sequence is complete.



23. Push battery pack carefully into holder making sure cable is not snagged





24. Fit battery lock bar and secure with red padlock – best fed into the hole from the back.



25. Use 3 red padlocks and 2 lengths of 5m chain (as necessary) to secure the frame to local post if possible without creating a trip hazard.





- 

- [illegible]