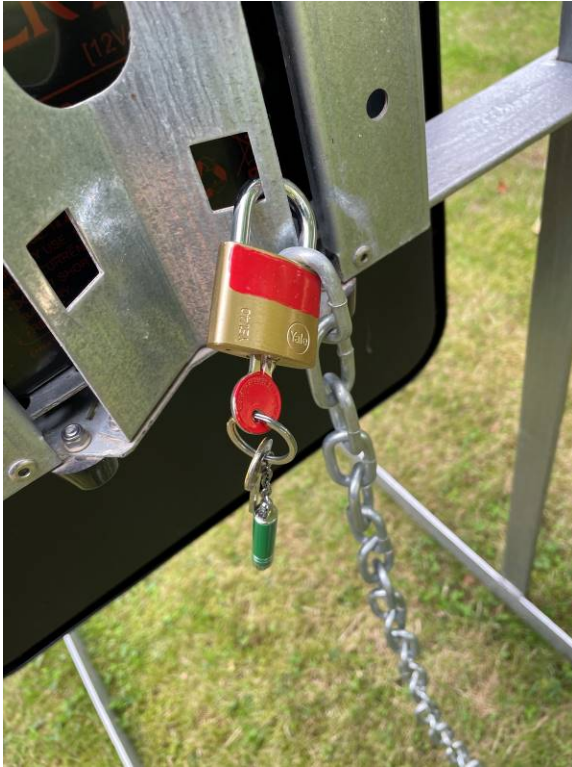


28. Remove Red padlocks and chains. Remove battery locking plate.



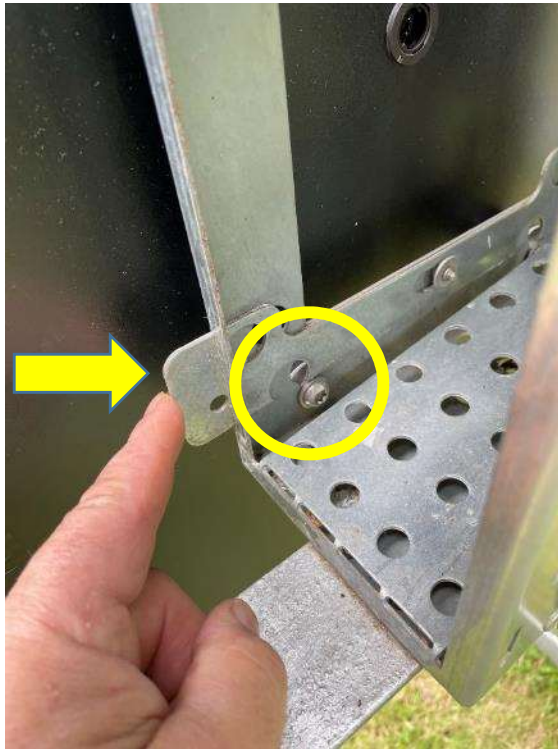
29. Withdraw and secure battery then unplug SID power cable.



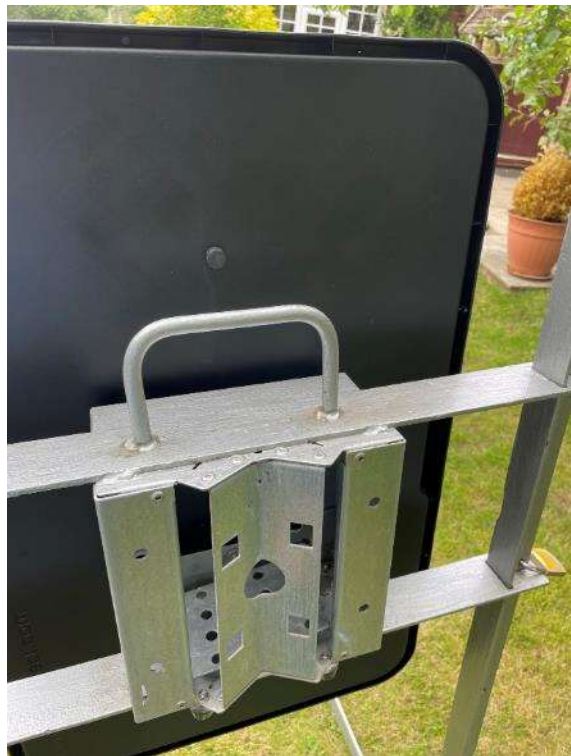
30. Remove battery



31. From behind the sign slide the SID locking bar to the left unlocking the holes on the frame on the bottom SID lugs



32. Using the SID hand grips lift up to release the 4 lugs and then out to detach from the mounting base



33. Replace the white foam pad over lugs and place the SID unit into the case with the face protected by the black foam and secure. Take care to protect the face from becoming marked or damaged.



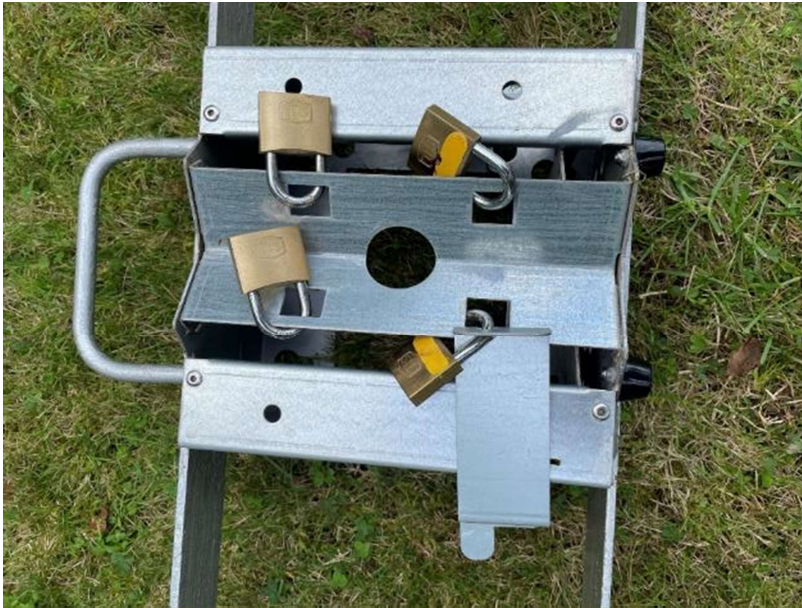
34. Using the handle on the central frame slowly lower the frame to a horizontal position.
35. Remove all 4 yellow padlocks



36. Pick up one leg and raise one end of the central frame about 15cm. Withdraw the leg to the central frame and slide the T section out of the top and then the bottom cross member. Pull out straight to avoid damaging the central frame.

37. Repeat for the second leg.

38. Secure all parts



39. Move the equipment to a safe area to allow for loading. Move the items unassembled due to the total weight once fully constructed. Find a safe location to park to load the equipment

Battery Charging

AkkuPack

The AkkuPack (12V/18Ah maintenance-free sealed rechargeable battery with connection cable) enables the mobile operation of our systems. The AkkuPack will be inserted into the battery compartment of the system housing and allows an system operation up to 10 days. The battery can be charged by the DataCollect battery charger.

Electrical data: typ. 12 VDC, 18 Ah

Cable length: 0,4 m

Weight: 5,5 kg

Dimensions: 180 x 170 x 80 mm

DataCollect battery charger

The DataCollect battery charger will enable the user to charge the DataCollect PowerPack and AkkuPack. The crocodile clips will establish a solid contact to the battery poles and an internal LED display will inform the user permanently about the charge status of the battery.

Electrical data: typ. 14,7 VDC, 4,0 A

Charging indicator: LED, multi color

Connection: alligator clips

Cable length: 1,8 m

Weight: 0,8 kg

Dimensions: 140 × 80 × 45 mm

1. Charge immediately after full discharge to preserve battery life.
2. Find a safe dry well ventilated area such as a garage or shed on a level surface



3. Ensure battery is not connected to SID device

4. Ensure charger is not connected to mains



5. Connect charging leads to same colour battery terminals red to red and black to black using crocodile clips ensuring a good connection



6. Connect 230V 3 pin plug into mains socket ensuring battery remains vertical
7. Allow 24 hours for charging
8. Disconnect 230V 3 pin plug from mains socket
9. Remove crocodile clips, stow charger and keep battery vertical.

Wheels

The legs are fitted with four wheels. They can be orientated in 3 directions

1. Vertically up for storage
2. Vertically down to allow the whole SID until to be moved assembled
3. Horizontal to allow the whole SID unit to be moved like a sack barrow



CARE is required if moving the assembled rig to support it and avoid it falling over.

The legs are rotated by slackening off the wing nut and relocating the tab into a different location.

If deployed on the wheels the wheel brakes must be used to fix it in its location.

The brakes are applied and released by pressing the black lever above the wheel.

Check they are secure before leaving the unit and off if moving the unit.