

# The Oaks



## Inside this issue:

<b>Bucklebury Parish Council</b>	
<b>WB Councillors</b>	6
<b>Family</b>	7
<b>Organisations</b>	8
<b>Halls</b>	11
<b>Country Life</b>	11
<b>Sport</b>	13
<b>Contributions</b>	15

Parish Council Chairman  
Wynne Frankum

Parish Council Clerk  
Helen Pratt

The Oaks Editorial Team  
Editor: Wynne Frankum  
Copy Editor: Lindy Clarke  
Typography: Helen Pratt  
Proofing: Christine Ewing

## Bucklebury Parish Chairman's Letter

At long last the transfer from David Wilson Homes to the parish, of the three meadows between Broad Lane and Byles Green is signed and sealed. You will recall that the condition on the land is that it remains in perpetuity as unimproved hay meadows for the informal recreation of parishioners. We are extremely fortunate to have such land, hay meadows being an increasingly rare habitat, invaluable to the local wild life. There is a management plan which will now be put into practice. Who would have thought it would have taken so many years? It is to be hoped that having dealt with all the legal aspects of the transfer in great detail, future parish councillors will not be faced with problems. It has all taken up a great deal of time and persistence, particularly by Helen Pratt who has worked assiduously. How lucky we are to have such a dedicated clerk. I would also like to thank Tim Slatford who has a great eye for the minutia in documents. That has been invaluable.

There have been two proposed boundary changes affecting the parish, one the result of WBC's decision to reduce the number of WB councillors to 43 and the wards to 24. The other, a Government decision to reduce the number of MPs in England.

Bucklebury Parish Council (BPC) contested the suggestion that Bucklebury would form part of a much bigger ward. You have probably read in the press that the decision has now been taken that Bucklebury remains a single ward with one councillor representing it at WBC, not two as at present.

The Constituency Boundary Commission proposed that Bucklebury Ward should be moved from the Newbury Constituency to West Reading constituency. This BPC also opposed on the grounds that people in the parish have little empathy with the issues facing the people of the West Reading Constituency and turn to Newbury and Thatcham for shops and services. Richard Benyon has supported this view. We await the outcome of the consultation.

A meeting was held in December with Thames Water. Please read the update in this edition. We have been assured that a new main pipe should be in place by the summer and the work on the new pumping station will be completed by next year.

On 16<sup>th</sup> January 22 members of the West Berkshire Countryside Society work team, organised by Richard Hubbard, spent the day maintaining the hedges on the Hockett field. If you walk round there, you will see they achieved an impressive amount of work. We are very fortunate to be able to call on the expertise of such a dedicated team.

We had a successful Common and Village Clearing on 14<sup>th</sup> Oct when a record number of people turned out. The next one will be on 14<sup>th</sup> April. Please put the date in your diary and remember at lunch time to leave some room for cake!

We were delighted to hear that both the Chapel Row Fair in August and the Beer Fest in September were so well supported. The Chapel Row Fair raising money for charity and the Beer Fest raising much

needed funds for the new Victory Room.

Many compliments were received when Broad Lane was resurfaced, both about the work and the obliging work men. These were passed on to the contractor.

Work on the updated edition of Bucklebury Vision is nearing completion.

The 5 street lights at the top of the Harts Hill and along Burdens Heath need attention. BPC are exploring the different options and will consult the households along there.

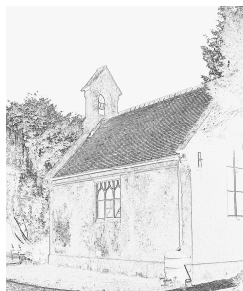
The precept will remain unaltered this year.

BPC would like to thank all those who enrich the lives of so many people in the parish by giving up their time to run clubs and organise events.

The Annual Assembly this year is on Friday 20<sup>th</sup> April at the Memorial Hall. Come along and get an update on what has happened and enjoy a glass of wine. It is your chance to ask questions and hopefully get answers!

**Wynne Frankum**  
**Chair BPC**

## Bucklebury Cemetery



Carols by Candlelight was again a happy start to the week before Christmas, bringing both young and old to sing in such a special setting. The Parish Council are very much indebted to all the wonderful local people who give up their time, energy and expertise to making it happen. Without them it just would not! We were able to send cheques to the Bucklebury Bus for £132.00 and the Newbury Food Bank for £133.00. Bucklebury Parish Council would like to thank everybody who donated so generously.

Some of the overgrown rhododendrons have been heavily cut back and these should grow again from the base in the spring. Some of the graves in the 19<sup>th</sup> century section had become very overgrown with heather and the parish council held a work party to clear these. It is tricky striking the right balance between maintaining the nature of the cemetery which is precious to so many and stopping the graves becoming overgrown. We try to get it right.



The Cemetery after the rhododendrons behind the Chapel had been cut back.

The war grave had suffered algal growth from its proximity to the rhododendrons and once these had been cut back, the War Graves Commission responsible for military graves visited the cemetery to clean it.

This year, in the spring, maintenance work will be carried out on the chapel.

C.R. Landscapes who maintain the cemetery have been asked to quote for filling in those graves which have subsided.

The grave markers were given their annual inspection and quotes will be obtained for work to be carried out on those which need attention. Of course, in the first instance, the family of the deceased are responsible for the upkeep of the grave.

Please remember that if you wish to do any work to a grave in the cemetery or you wish to apply for a burial, you should first read the rules and regulations and consult Helen Pratt, the superintendent. Occasionally to some consternation, people have acted without authority. Managing a cemetery of course needs sensitivity and dealing with unauthorised work is a problem we would rather not have.

The cemetery is a lovely place for a quiet stroll in any season and it is hoped it will continue to give many people pleasure and solace in this coming year.

**Wynne Frankum**  
**Chair of Bucklebury Burial Board**

## Planning

Currently, WBC send paper copies of all planning applications in Bucklebury to the Parish Council for consultation. This is all about to change! WBC has decided that as of the 31st March 2018, they will not distribute paper copies of planning applications to parish councils, but will notify the parish councils of applications relevant to them and then it is up to the parish council to view the applications on the WBC website.

The majority of your Parish Councillors are used to paper copies; they are scrutinised at meetings and during site visits in order to gain a better understanding of the proposals. Having considered the issue, your Parish Council has now had a practice whereby the planning applications were projected onto a screen at a meeting; this was quite successful. Ideas are in place for how applications can be viewed during site visits, but this is yet to be tested. So, if you come to a meeting or meet your Parish Councillors on a site visit and they are struggling a little with technology, please have patience with them!

**Helen Pratt - Parish Clerk.**

Reference	Description	BPC Status	WBC Status
16/02923/CERTE	<b><u>Glenvale Nurseries, Hungerford Lane (Adjacent Parish).</u></b> Retail garden centre.	Comments	Refused Allowed on appeal.
16/02922/OUTD	<b><u>Glenvale Nurseries, Hungerford Lane (Adjacent Parish).</u></b> Outline application for the demolition of garden centre and replace with 4 x custom build dwellings – Matters to be considered: Access.	Object	Refused Taken to appeal.
17/01884/HOUSE & 17/01885/LBC2	<b><u>Vanners, Bucklebury.</u></b> Upgrading and remodelling of historic cottage and replacement of C20th north range with new kitchen and family room range.	No Objection	Approved.
17/02249/AGRIC	<b><u>Land at Hatch Pightle Gully, Hatch Lane.</u></b> Toolshed, open fronted log store.	Object	Full application required.
17/02162/HOUSE	<b><u>Firlands Burdens Heath.</u></b> Demolish existing garage and construct new single storey rear/side extension.	Object	Approved.
17/02279/FULD	<b><u>49 Roundfield.</u></b> Proposed new build detached bungalow, including basement level, and additional parking space.	Object	Approved.
17/02260/FULD	<b><u>Fifield Farm.</u></b> Section 73A Removal of Condition 7 – sustainable drainage, Condition 9 – Landscape, Condition 10 – protection of trees, Condition 11 – Spoil and Condition 12 – external lighting of previously approved application 16/01363/FULD: Demolition of existing outbuildings and barn and replacement by proposed erection of a new dwelling, as already approved by West Berkshire Council reference number 15/02340/FULD, but to include basement.	Object	Approved.
17/02266/FUL	<b><u>Little Roselands, The Avenue.</u></b> Demolition of the existing dwelling, annexe, garage and outbuildings and the erection of a replacement 5 bedroom dwelling with associated parking and access arrangements.	Object	Approved.
17/02535/HOUSE	<b><u>Autumn House, Byles Green.</u></b> Garage roof extension.	Object	Refused.

17/02619/HOUSE	<b><u>Marlston Farm.</u></b> Single storey gable extension to the front façade with cat-slide ground floor extension to the west, east and south elevations with the associated removal of existing external stairway.	Object	Refused.
17/02670/HOUSE	<b><u>Poppies, Long Grove.</u></b> Two-storey side extension. Front porch extension.	No Objection	Approved.
17/02794/HOUSE	<b><u>Eliezer Cottage, Zin Zan.</u></b> Part demolish low grade two storey extension and construct new 2 storey extension incorporating garage.	Object	With- drawn.
17/02822/FULMAJ	<b><u>Copse Close, Hopgoods Green.</u></b> Demolition of existing dilapidated dwelling and construction of new dwelling built to modern standards.	No Objection	Refused.
17/02859/FULD	<b><u>Wimbles Barn, The Wimbles, Harts Hill Road (Adjacent Parish).</u></b> Change of use and conversion of existing barns to a residential dwelling, ancillary store together with residential amenity space, landscaping, parking and associated works.	Object	Awaiting decision.
17/03052/HOUSE	<b><u>Wayside, Hatch Lane.</u></b> Single storey front extension, dormer roof alterations and first floor extension.	No Objection	Awaiting decision.
17/03095/HOUSE	<b><u>Windy Ridge, Burdens Heath.</u></b> Apply Cedral cladding to first floor elevations only to cover existing white painted render finish which has cracked.	No Objection	Approved.
17/03305/FUL	<b><u>J Sellwood, Long Grove.</u></b> Section 73: Application for variation of condition (2) amended plans of approved application 17/00078/FUL.	No Objection	Approved.
17/03299/LBC2	<b><u>Fairchilds, Sadgrove Lane.</u></b> Application for addition of low level brick plinth and repair replacement of roof tiles.	No Objection	Awaiting decision.
17/01787/HOUSE	<b><u>Nuttage House, Bucklebury.</u></b> Extension to annexe.	No Objection	Refused by WBC. Taken to appeal.
17/03504/HOUSE	<b><u>36 Roundfield.</u></b> Two storey rear extension.	No Objection	Awaiting decision.
17/03493/MINMAJ	<b><u>Hartshill Copse, Burdens Heath.</u></b> Section 73. Variation of condition 1 (time period of operations) of the appeal decision APP/U0300/A/88/93423 for Extraction of hoggin from Land adjoining Harts Hill Road, to enable a satisfactory restoration scheme to be agreed, implemented and completed.	Object	Awaiting decision.

## **Thames Water - New water mains improvements for Bucklebury**

Thames Water are working on a number of projects to replace and improve the water supply infrastructure for Bucklebury.

The projects include building a new improved water booster station near the bottom of Harts Hill, replacing the 12 inch main that brings water up to Bucklebury and some local replacement of some of the smaller water pipes in both Briff Lane and Little Lane.

The existing pipes will be replaced with new plastic ones which are stronger and less prone to leaks and bursts. This reduces the risk of interruptions to water supplies for customers who get their water supply via the pipes and also reduces the need for future emergency roadworks.

The new booster station will also improve the water pressure in the area.

Works for the smaller pipes are already underway and are planned to be finished in Little Lane by 13 February and in Briff Lane by 21 March. The larger projects for the pumping station and the 12 inch water main are planned to start in the Spring and will take about 9 months. Thames Water are currently looking into how the work can be done with the minimum disruption and will keep residents informed of their plans once the details are decided.

**A drop-in session has been booked for Thames Water staff to meet residents and discuss the works, with details below:**

**15 February, 2pm – 7pm  
The Oak Room at Upper Bucklebury Memorial Hall  
Broad Lane  
Upper Bucklebury  
RG7 6QH**

Thames Water project manager Jon Wickens said: “Although we appreciate our work will cause some delays, feedback from our customers is they want to see us investing money and upgrading our ageing network of pipes to reduce leaks and bursts. They want reliable water supplies that are fit for the future so it’s vital we replace the old pipes.”

# **Thames Water**

**Drop-In Session**

**Thursday 15th February**

**2pm – 7pm**

**The Oak Room**

**Bucklebury Memorial Hall**

**Come and meet**

**Thames Water and have your  
questions answered**

## **Artisan Market**

The Village Artisan Food Market replaces the Bucklebury Artisan Market that used to be held at the Bladebone Inn.

The new market is held at Beenham Village Hall. We are an exclusively, quality food market - with the exception of one wonderful florist. We aim to use local producers from small, individual concerns, who take pride in the quality of their products. The Market runs from 10.00 -12.30 on the first Saturday of the month. There is ample parking for customers and we also run a cafe with tea, real coffee and homemade cakes and biscuits. From February, we shall also be offering bacon rolls for the first 3/4 hour. Our website is [www.thevillageartisanfoodmarket.com](http://www.thevillageartisanfoodmarket.com). We also welcome enquiries from any potential seller who may be interested in joining the Market.



## West Berks District Councillors

Bucklebury Ward contains the parishes of Bradfield, Bucklebury, Frilsham, Hermitage and Stanford Dingley. Our councillors are:

Graham Pask Tel: 01635 864023

Email: [graham.pask@westberks.gov.uk](mailto:graham.pask@westberks.gov.uk)

Quentin Webb Tel: 01635 202646

Email: [quentin.webb@westberks.gov.uk](mailto:quentin.webb@westberks.gov.uk)

### WBC Councillors' Report

Happy 2018!

We wrote in the last edition of The Oaks last October about the Local Government Boundary Commission's proposals to bring together fifteen parishes as one big rural ward to be represented by three District Councillors. This proposal would have covered an area from Bucklebury through Aldermaston to Ufton Nervet and would, we felt, give very poor cover to our electorate as Councillors would find it difficult to have a good understanding of the issues affecting such a diverse range of parishes. We are pleased to report that the Commission has issued its final proposal which results in Bucklebury returning to being a single member ward (one District Councillor) covering the parishes of Bucklebury, Stanford Dingley, Midgham and Woolhampton.

The full report can be found at [www.lgbce.org.uk](http://www.lgbce.org.uk) where it states that, subject to approval by Parliament, the new ward boundaries will take effect for the local elections to be held in May 2019, with a final number of Councillors down from 52 to 43 (saving tax payers money) representing 24 wards, a reduction of 6.

We are sure you have all noticed that Broad Lane in Upper Bucklebury was completely resurfaced in December and has made a great difference to all who use it. The work was carried out very efficiently in a week and I think the contractors were particularly good at helping local residents access their homes. As you will read elsewhere in this newsletter Thames Water have committed to provide us with a new water pipe from the bottom of Harts Hill

together with a new, modern, pumping station. Our aim will be to ensure that disruption is kept to a minimum whilst this important work is carried out and, of course, to ensure that the road is reinstated to a high standard. It is not intended to damage our newly laid road surface!

An important reminder! We still receive reports of the illegal use of vehicles on the common and although we have placed more temporary closure restrictions on our byways this year than ever before it is important to report any illegal activity to the Police. Rather than go into great detail again please refer back to the May 2017 edition of The Oaks (on the Bucklebury Parish Council website and follow the links under publications) where we reported in detail what you should do.

We are always happy to assist with District Council matters so please contact us if you think we could help.

Graham Pask and Quentin Webb

### Bucklebury Parish Council

## Common Clearing and Parish Litter Pick

Please come to help clear litter from the  
paths of Bucklebury

**Saturday 14<sup>th</sup> April 2018**

Equipment will be provided

SKIPS at the Memorial Hall

and Chapel Row

Meet Bucklebury Memorial Hall  
**2.00pm**

Free refreshments afterwards

**"Keep Bucklebury Beautiful"**

## Family

### West Berkshire Ballet School

We ended our term, not only with a visit from Santa, but also three whole days of ballet exams with 60 students and 3 different examiners braving the unexpected snow!

Exam results just arrived! No fewer than 13 dancers were awarded Distinction with more than 80% and 34 receiving Merit – 100% success! Holly has now reached Licentiate status with the ISTD – richly deserved after all her hard work.

Our dancers did us (and their families) proud at the National Cecchetti Ballet Awards held at Sadlers Wells theatre in London, with Darcey winning the Performance Award in her section and Ellie receiving a special Commendation – many congratulations to you all.

We had a wonderful outing to Matthew Bourne's Cinderella just before Christmas with our usual full coach of 59. This production uses Prokofiev's beautiful score but is set during the 2<sup>nd</sup> World War – another of clever Mr. Bourne's

interesting and different ballets.

As a result of their exam success, the dancers will have the excitement of embarking on new work, and the Spring term will also see the welcome return of our Cup Classes – there are 7 major awards to be won and we shall invite 2 distinguished members of the Cecchetti Society to adjudicate.

Claire has agreed to run our Easter Course this year. The students will work on a production of Tangled, which they will perform on the final day. Places for this highly popular 4 days disappear so quickly and, as I write (in January) Claire tells me there are only 2 spaces left! Dates for our Summer School are already published – Mary Poppins this time.

In the modern & tap department, rehearsals have already begun for the WBBS production of Matilda which will be running at The Memorial Hall in early July. The cast is thoroughly enjoying getting to grips with the complicated lyrics and having lots of fun with the choreography.

*Jane Scholl, Claire Bowden,  
Holly Unnuk & Lucie Dale*  
Wbbs.org and facebook



Members of WBBS with Santa

## Bucklebury Events Committee

### The Christmas Tree Festival.

A record number of trees were decorated for the festival this year, so the Memorial Hall looked very festive. The theme was "Nursery Rhymes" and the interpretations were clever, original, generated much comment and made a lovely display. The winners were Bucklebury School, the Pre-school and the Mah-jong Group.



The Mah-jong Christmas Tree

So many people helped to make the festival another success and we would like to thank them all. The money raised enabled £50 donations to be sent to the Newbury Food Bank and the Rosemary Appeal.

If you would enjoy helping with the occasional event, the small and informal committee would welcome you. Please ring 01635 863372.

**Bucklebury Events Committee**

## Organisations

### Tuesday Ladies' Club (TLC)



On behalf of the committee I would like to wish all our members past and present a very Happy and Healthy 2018.

As some of you might already know Wynne Frankum has decided, after many years, to stand down from our committee and I would like to take this opportunity to say thank you to her for her tireless efforts researching speakers and interesting topics for our meetings. We wish her well.

Since the last publication in October we have had an informative talk on the canal system around Paris with some wonderful pictures and finished off the year with our always popular Xmas party, this year with a Spanish theme. During the evening we discussed our 2018 party...yes I know, but we all thought a "Posh or Plonk" theme might be great fun!!

We have already had our first meeting of 2018, a fascinating talk by Ed Cooper on the history of Greenham Common brought right up to date with the immense work involved to return the Common to heathland, which was a mammoth task.

- Feb 13th Silkcraft
- Mar 13th Ozlem Graves - Cookery with a byzantine flavour
- April 10th Changi Red Cross Quilts
- May 8th Fragrance and Memories
- June 12th On site behind the scenes at Bucklebury Farm Park
- July 11th Afternoon cream tea.

Dates for your diary are as follows:

This is your ladies club, please come and support us, bring a friend, and bring ideas of any future topics you would like included.

We meet on the second Tuesday of every month in the Oak Room in Upper Bucklebury. The cost of each meeting is £3 to cover the hire of the hall and refreshments. We look forward to seeing you there.

**Committee members: Jackie Sadler, Hilary Pask, Karin Warne and Sue Puri**



## Mah-Jong

We meet on the first and third Mondays of each month (not Bank Holidays) for a couple of hours of fun and relaxation. We are a mixed group and welcome beginners. At the moment we don't score at the end of each game but do have a member who is proficient in this should you wish to learn.

We usually have 12 – 15 playing each time and chat over a cup of tea and a biscuit (or two) as well. Cost is £2.00 per person.

We play using the rules written by Max Robertson, whose book "The Game of Mah-Jong" has been accepted as the foremost authoritative guide to the rules and scoring of this fascinating game. It is a Penguin book, ISBN 978-0-14-300659-6, and would be available through bookshops or on line. The U3A in Thatcham also follow these rules so it would be easy for anyone to join their group. I also have photocopied sheets (available to members) showing the basic hands from this book.

Do come along and enjoy a fun afternoon with lots of laughs.

We participated in the parish Christmas Tree display in December and I would like to thank Pat Barnard-Smith for decorating the tree with the theme of Oranges & Lemons. We won some chocolates!

**Helen Relf,**  
[grannyrelf@btinternet.com](mailto:grannyrelf@btinternet.com)  
01635 867619

## Bucklebury Walkers

We have been walking the paths of Bucklebury and surrounding parishes since January 2006 – we are a mixed group of all abilities and our aim is to have a social walk each month.

We still meet on the first Thursday of each month – list on the Bucklebury web page or Helen, 01635 867619 [grannyrelf@btinternet.com](mailto:grannyrelf@btinternet.com) – at 10.00 a.m. for about 3 – 4 miles but we now also run a shorter walk leaving at 10.30 and walking for about 2 miles. We then meet back at the venue for coffee and sometimes lunch - you are welcome to join either group.

Over 30 of us enjoyed an excellent Christmas meal at The

Cottage Inn again last year. Great fun was had by all – I hope!!

I would like to thank Diane Dalgarno, once again, for decorating the Walkers' Christmas Tree for the village display! Her theme was Incey Wincey Spider and we won a lovely tin of chocolates.

I would also like to thank all the 'volunteers' who have led walks during the past year and we look forward to the walks in 2018.

Please contact me for more details or just turn up at any of the walks – the diary is in The Oaks and on the village website.

**Helen Relf,**  
01635 867619.  
[grannyrelf@btinternet.com](mailto:grannyrelf@btinternet.com)



Bucklebury Walkers Incey Wincey Spider Christmas Tree

## Pilates

Pilates is a form of exercise that is suitable for everyone, bringing together mind and body, allowing clients to work safely and effectively. All exercises are built around 8 principles of:-

Relaxation  
Co-ordination  
Centring  
Stamina  
Concentration  
Breathing  
Flowing movements.

We enjoyed a couple of Christmas social events. Some of us met at The Queen's Head in Bradfield, run by Aaron and Francis who both attend weekly classes, for an early festive outing enjoying good food, drink and laughs. On the last Wednesday evening class in December we visited The Cottage Inn for drinks.



2018 has started well. Michaela started two new evening classes at Peasmore Village Hall. These classes already have a waiting list for places, so we are trying to accommodate everyone by adding an extra class in the near future. Michaela is also teaching monthly Graham Dance Technique classes.

We are looking forward to upcoming training at Body Control Pilates Centre in London. We have booked onto:-

- Pilates for Racquet Sports
- Pilates for Golfers
- Pilates for Equestrians

We have qualifications to teach **Pre and Post Natal Pilates** as well as **Pilates for Bone Health (Osteoporosis)**.

Classes are held at **Bucklebury Memorial Hall** in **The Oak Room** on:

- **Monday at 8.30pm**
- **Wednesday at 9.30 am, 10.45am, 6.30pm and at 7.45pm**
- **Friday at 9.30am**

Classes are also held at **The Fisher Rooms** in **Cold Ash** on **Monday at 7.00pm** and at **Peasmore Village Hall** on **Tuesday at 6.15pm** and **Thursday at 7.30pm**.

If interested in attending a class please contact Mel at [meriel58@yahoo.com](mailto:meriel58@yahoo.com)





## Quiz Night

At the Victory Room, Bucklebury Village

21<sup>st</sup> April 2018, 7.30pm start

Tickets £12 per head incl pre ordered fish, chicken or vegetarian supper.

Bar and Raffle

To enter a team of min 4, ideally 6 to a max of 8 contact:

John Brims 07799 348451 or [john.brimms@tesco.net](mailto:john.brimms@tesco.net)

## Halls

### The Victory Room



We welcome two new members, Robin Ranken and Rosie MacGregor to the trustee management committee.

The trustee management committee continue to research opportunities to raise funds for the redevelopment. We have been talking to local organisations that have already raised funds to redevelop their village halls so we understand what application materials have been effective in achieving a successful outcome from funders. We have also discussed the project with a number of developers to gather a range of possible costings and construction methods for the redevelopment. We will be making some significant applications over the coming months.

We are planning a number of fundraising events for the redevelopment and these are some dates for you diaries.

Date	Event
21st April 2018	Quiz Night and supper
21st July 2018	Spanish Evening
6th October 2018	10th Annual Beerfest

We would always like to hear from any parishioner that would be willing to help with any of the above fundraising events on an ad hoc basis as the trustee management committee is relatively small. If anyone is interested in helping please contact me.

**John Brims**  
**Chair of the Trustees of the Victory Room**  
**0118 97133308**  
[john.brimms@tesco.net](mailto:john.brimms@tesco.net)

## Country Life

### West Berkshire Countryside Society

The events below give you the opportunity to come out on practical tasks, learn new skills, meet new people and, above all, enjoy yourself. The tasks usually begin around 10am and finish by 3pm but you are very welcome to come for as much time as you wish to give during these hours. Please wear suitable footwear and clothing, and bring a packed lunch if you are coming for the full day. Hot drinks are usually provided, as are the necessary tools.

**Saturday 10th February 10.30 am - 1.00 pm**

**Bucklebury Common, Upper Bucklebury SU550 688**

Heathland management. Join the Bucklebury Heathland Group to help maintain this important heathland habitat. Meet at Angels Corner SU 550 688

**Tuesday 13th February 10.00 am**

**Furze Hill, Hermitage SU512 740**

Woodland and butterfly habitat management on this parish wildlife site. Ample parking at new village hall - through double gates off Pinewood Crescent

**Sunday 11th March 10.30 am - 1.00 pm**

**Bucklebury Common, Upper Bucklebury SU550 688**

Heathland management. Join the Bucklebury Heathland Group to help maintain this important heathland habitat. Meet at Angels Corner SU 550 688

**Tuesday 27th March 10.00 am**

**Rushall Manor Farm, off Back Lane, Bradfield SU584 723**

Woodland management, coppicing and ride widening. Meet at the Black Barn off Back Lane between Stanford Dingley and Bradfield.



Members of the WBCS taking a well earned break on the Hockett Field.



## Bucklebury History Society

### HISTORY OF BUCKLEBURY CECILIA MILLSON

*After the war, when she and her husband came to live in Bucklebury, Mrs. Cecilia Millson produced some historical scenes for the Women's Institute. In her research she had to delve into the history of Bucklebury and in doing so she became interested personally. Mrs. Millson kindly agreed to write a series of articles on Bucklebury for the magazine, and were first printed cir 1973.*

#### **Part VIII**

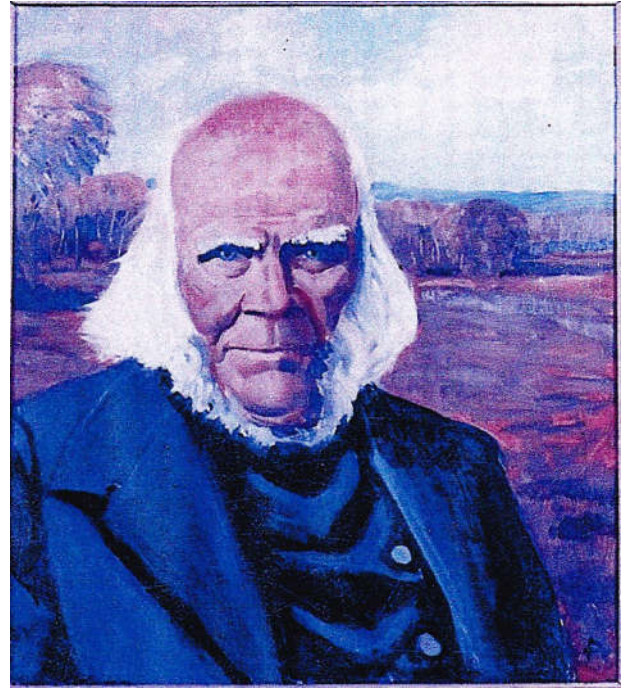
Winchcombe Henry Howard Hartley succeeded his father, the beloved pastor, as Lord of the Manor. He was not long to enjoy living at the manor house as a disastrous fire caused so much damage that the Elizabethan house was demolished, and only the kitchen, stables and dovecot remained.

Mr. Hartley was not the only Bucklebury man to leave his home at that time. Robert Bedding, of Chapel Row Revel fame, left Avenue Cottage to live with his daughter, Martha, who had married Charles Davies, the foreman of the manor yard. Robert Bedding's new home was the cottage by the Church, where his descendants live today.

The young oak trees, planted to commemorate the victories of the Napoleonic Wars, were thriving along the Avenue, and all seemed well with the parish as the agricultural riots were over and men were receiving better wages. However, the Enclosure Acts were destroying many of the ancient Common rights, and in 1835 a bill came before Parliament to enclose Bucklebury Common.

There was at this time a Nonconformist preacher, by the name of John Morton. He had come to Bucklebury when a young lad with his mother, a gardener's widow from Sunninghill. He attended the Blue Coat School at Thatcham, and one day he became ill on his way home, and was carried to his cottage by his schoolmates. The severe fever left him so wasted that his mother carried him in a large basket to take the air, and he was lame for the remainder of his life.

This did not prevent him from becoming a farmer and a lay preacher. He travelled the countryside preaching the gospel, often meeting with derision and ill-treatment. Services were held in a disused blacksmith's shop on Turner's Green and, leaving his faithful congregation to support him with their prayers, he journeyed to London to oppose the Bill of Enclosure. He employed Counsel at his own expense, and with the help of a sympathetic Member of Parliament, John Walters, he succeeded in defeating the Bill, and returned home in triumph.



John Morton

On May 21<sup>st</sup> 1839 he was ordained as a full minister of the Congregational Church, and the land was purchased on which the rough Chapel stood. A new building was erected at the cost of £400. Morton's Chapel stands today to remind us of a man who upheld the rights of the Commoners of Bucklebury.



Morton's Chapel, Turners Green.



## Sports

### FC Cougars



Our teams are already over half way through a busy season of youth football, with our younger age groups enjoying regular matches at Bucklebury Recreation Ground on Sunday mornings.

It will be quieter at the Victory Room on Sunday mornings during January and February as most of our age groups begin a few months of playing Futsal at local sports halls between Reading and Newbury. Futsal is a modified form of football played indoors, and the children will be following in the footsteps of some of the world's best football players who learned their skills playing Futsal in their youth!

FC Cougars, established in 2013, are a fun and friendly local football club affiliated with the Berks and Bucks FA. We

currently have seven teams ranging from under 8s to under 13s with children from Thatcham, Bucklebury and surrounding areas. Our coaches and team managers are all enhanced DBS checked and our coaches are FA qualified at Level 1 or higher.

Our aim is for all children, regardless of ability, to enjoy playing and progressing as footballers in a fun, safe and organised environment. As well as Sunday league matches, playing home and away, we run mid-week training sessions aiming to make football accessible to all.

We have spaces available in some of our age groups for new players to join. If your child might be interested in playing, or if you would like to volunteer to help, please visit our website at [www.fccougars.com](http://www.fccougars.com) or visit us on Facebook.



FC Cougars Under 10s team at Bucklebury, all ready for action before a recent home match in Reading and West Berkshire League

# Bucklebury Tennis Club

[www.buckleburytennis.com](http://www.buckleburytennis.com)

## SUCCESS COMES TO BUCKLEBURY!

At the Newbury & District LTA AGM at the end of last year, Bucklebury Tennis Club managed to claim an excellent set of results in the 2017 Summer leagues. We followed up our equally good performance in the previous Winter leagues, and are now proud holders of the following trophies:

Men's A Team: Winners Division 1;  
Men's B Team: Winners Division 3;  
Ladies B Team: Runners-up Division 1

Congratulations to all the team members and thanks to the respective Captains (Andy Rogers; John Palmer and Trish Strange) who spend their days persuading the guys and gals to keep up the good work.

We are now mid point of the Winter leagues and have teams entered: Ladies in the Berkshire league, and in the Newbury & district leagues: Men's A; Men's B; Mixed A; Mixed B and Men's Vets A & B.

Anyone interested in joining in the fun please let me know! We'll have you on the courts in no time.

## DRILLS & SKILLS

For all those who have relaxed over the Christmas break we are now into the fun stuff of trying to get a little fitter and leaner and at the same time improve our tennis. Drills and skills are already in action on a Pay & Play basis on Monday evenings. We have 2 sessions one at 6.30 p.m. for an hour, and another at 7.30 p.m. for an hour and a half. It is open to all so come along and enjoy a new challenge. Charges are £6 per hour for members and £8 per hour for non-members.

## JUNIOR & TEENS COACHING

Starting in April we are running a series of coaching sessions for our younger players. We are planning to have sessions for 5 - 7 yr olds, 8 - 12yr olds and Teens Mondays/Wednesdays. The plan is to hold 10 sessions for each group within the school term time, but excluding half term/public holidays. Coaching is under our qualified coach Damian Lane, but enquiries should in the first instance be directed to Karen Pegg, who has volunteered to coordinate the arrangements. There is a fee charged for this programme of £6 per hour for non-members discounted for members.

Contact Karen e-mail [kppegg61@gmail.com](mailto:kppegg61@gmail.com)

## SKITTLES EVENING

The Club has scheduled an evening of skittles for all our local residents and friends. Peaches Challenge Cup is the prize for the winning team, plus small prizes for the winning individual skittlers and a grand raffle for a hamper and other worthwhile surprises.

Put the date in your diaries and get a team together or come and let us find you a suitable friendly team to join.

SATURDAY 3<sup>RD</sup> MARCH 7.00 P.M. for 7.30 p.m. start, Bucklebury Memorial Hall

## CLUB MEMBERSHIP

Everyone is most welcome and our aim is to keep the facilities available to all local residents and friends. Most details for joining the Club are on the website. New members and visitors are most welcome.

Please contact the undersigned or the Club Secretary, Norman Casson [normancasson@aol.com](mailto:normancasson@aol.com) either through our Club website or by direct contact, if you have any further queries.

Enquiries to Mike James e-mail [m-a-james@tiscali.co.uk](mailto:m-a-james@tiscali.co.uk)  
Or Phone 01189712285



## Bucklebury Badminton Club

### WANT TO GET FIT AND MEET PEOPLE?

Come and try **badminton** at your local club

We are a friendly group of all different ages (17 to well over 60!) and we play every Tuesday night at Elstree School. Make it your new year's resolution to come and visit us. You may be returning to it after a break or you may be an ace player; either way, you are very welcome. If you consider yourself a beginner, come along and see how you get on. We offer coaching and guidance.

We are now half way through the season and it's going well. Team players are enjoying their games even if they don't always win but most have had some success. Club nights are well attended and membership is very healthy.

The Christmas social was a lively affair at The Cottage Inn (where else is there?) and the plan is to have more outings in the spring and summer.

For more information check our new website or Facebook. If you prefer you can phone for a chat before you come along.

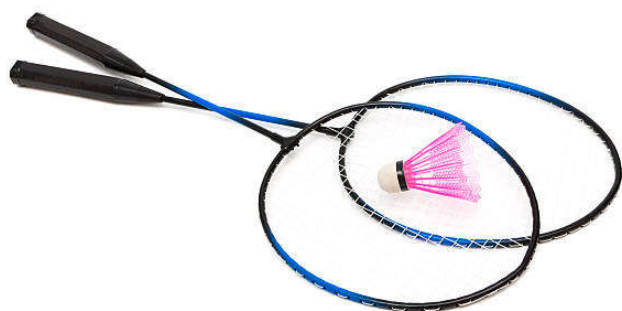
VENUE: Elstree School, Woolhampton, RG7 5TD

DAY: every Tuesday 8 to 10 p.m.

COST: £5 for visitors (deducted from subscription which is £110 per annum **pro rata**. £50 for students)

CONTACT: Margaret Neville 01635 873811  
margaretnev@yahoo.co.uk

WEBSITE: buckleburybadmintonclub.com



## Contributions

Material to appear in The Oaks should be sent neatly typed for scanning or as a word-processor document (e.g. MS Word), attached to an e-mail and sent to "buckleburyparishclerk@yahoo.co.uk". Don't worry about layout as it will be re-formatted to the house-style. Please supply any pictures or artwork as separate files, as they are not usually recoverable from word processor files and don't forget to include captions for the pictures.

**All contributions appertaining to the Parish are very welcome but the Parish Council reserves the right to adapt or omit submissions.**

**The deadline for submissions is the 20th of the month before publication.**

**Wynne Frankum**

Published in February, May and October

By Bucklebury Parish Council.

Helen Pratt, Clerk,

Jasmine Cottage, Byles Green, Upper Bucklebury,

Reading. RG7 6SD. Telephone: 01635 863581

E-mail: buckleburyparishclerk@yahoo.co.uk

Copyright © Bucklebury Parish Council, 2018

(Printed by The Alpha Xperience, Newbury

Telephone 01635 523240)

Distributed free to all households in Bucklebury Parish,  
and on the web:

<http://buckleburyparish.org/publications/the-oaks>

# Parish Diary Dates

## February

1st	Bucklebury Walkers	10.00am/10.30am	The Cottage Inn, Upper Bucklebury
5th	Mah-jong	2.00pm	The Oak Room, Bucklebury Memorial Hall
10th	West Berkshire Countryside Society	10.30am	Angels Corner
12th	Bucklebury Parish Council	7.45pm	Committee Room, Bucklebury Memorial Hall
13th	Tuesday Ladies Club	7.45pm	The Oak Room, Bucklebury Memorial Hall
15th	Thames Water Drop-In Session	2.00pm - 7.00pm	The Oak Room, Bucklebury Memorial Hall
19th	Mah-jong	2.00pm	The Oak Room, Bucklebury Memorial Hall
26th	Planning Meeting	8.00pm	Committee Room, Bucklebury Memorial Hall

## March

1st	Bucklebury Walkers	10.00am/10.30am	Bucklebury Farm Park
3rd	Tennis Club Skittles	7.00pm for 7.30pm	Memorial Hall (by ticket in advance)
5th	Mah-jong	2.00pm	The Oak Room, Bucklebury Memorial Hall
11th	West Berkshire Countryside Society	10.30am	Angels Corner
12th	Bucklebury Parish Council	7.45pm	Committee Room, Bucklebury Memorial Hall
13th	Tuesday Ladies Club	7.45pm	The Oak Room, Bucklebury Memorial Hall
19th	Mah-jong	2.00pm	The Oak Room, Bucklebury Memorial Hall
26th	Planning Meeting	8.00pm	Committee Room, Bucklebury Memorial Hall
27th	Tennis Club AGM	7.30pm	Committee Room, Bucklebury Memorial Hall

## April

5th	Bucklebury Walkers	10.00am/10.30am	The Cottage Inn, Upper Bucklebury
9th	Bucklebury Parish Council	7.45pm	Committee Room, Bucklebury Memorial Hall
10th	Tuesday Ladies Club	7.45pm	The Oak Room, Bucklebury Memorial Hall
14th	Common Clearing	2.00pm	Bucklebury Memorial Hall.
16th	Mah-jong	2.00pm	The Oak Room, Bucklebury Memorial Hall
20th	Annual Parish Assembly	8.00pm	Bucklebury Memorial Hall
21st	Victory Room Quiz and Supper	7.30pm	Victory Room (by ticket in advance)
23rd	Planning Meeting	8.00pm	Committee Room, Bucklebury Memorial Hall

## May

3rd	Bucklebury Walkers	10.00am/10.30am	The Cottage Inn, Upper Bucklebury
8th	Tuesday Ladies Club	7.45pm	The Oak Room, Bucklebury Memorial Hall
14th	Bucklebury Parish Council	7.45pm	Committee Room, Bucklebury Memorial Hall
21st	Mah-jong	2.00pm	The Oak Room, Bucklebury Memorial Hall