



The Oaks

Bucklebury Parish Council

Inside this issue:

WB Councillors	9
Family	11
Groups & News	13
Halls	16
Exercise	16
Sport	18
Contributions	19

Parish Council Chairman
Barry Dickens

Parish Council Clerk
Helen Pratt

The Oaks Editorial Team
Editor: Barry Dickens
Typography: Helen Pratt
Proofing: Christine Ewing

Bucklebury Parish Chairman's Letter

As I write this it's almost a year to the day when we entered the first pandemic lockdown. And what a year it has been. For many of us in Bucklebury, as in other places, we have become accustomed to spending much more time at home both for work and leisure. We have come to appreciate even more our countryside and the beautiful surroundings in which we are fortunate to live.

Our older parishioners were some of the first in Berkshire to receive their initial Covid vaccinations at the turn of the year. The smooth, efficient operation at the Pangbourne vaccination centre was greatly to the credit of the Chapel Row Surgery.

We have invited Dr Lennox, the senior partner, and the Practice Manager from the Surgery to talk at our virtual Annual Assembly on 6 May. There will also be a speaker from West Berkshire Council telling us about recycling progress. I hope many of you will be able to join us at the event when, doubtless, debate on the big current issue before us of the proposed NE Thatcham housing development will receive an airing.

In this edition of The Oaks our District Councillor, Graham Pask, gives his views on the backdrop to the scheme and the leader of the Bucklebury opposition group, Tim Slatford, writes about what the group is up to and their future plans. BPC has given the group a start-up grant but further funding will be needed if the group is to mount an effective campaign. I would ask all those who are opposed to this development to consider making a donation to the group.

We are determined on BPC to promote

measures for the health and wellbeing of all in Bucklebury. To that end on Thursday 24th June at 10.30am we are planning to reinstate our coffee mornings in the Oak Room at the Memorial Hall. This will be a great opportunity for those who have been housebound or with limited chances for socialising to meet up for a chat over refreshments. We will be looking to use the community bus to help get people to the event.

In addition, with the weather improving we are hopeful more will make use of the small meadow next to the Cottage Inn. Not everyone in Bucklebury has a garden or is mobile enough to walk on the common so the small meadow is an easily accessible option for recreation and relaxation.

Let's look forward to the onset of Spring, Summertime and the progressive release from lockdown measures.

Barry Dickens - Chair of BPC.

Bucklebury Virtual Annual Parish Assembly

7.45pm Thursday 6th May 2021

Zoom Meeting ID: 895 1530 0348

Passcode: 747454

Guest speaker: Kofi Adu-Gyamfi
(Waste Manager at WBC)

This is **your** opportunity to raise any issues you have with roads, public rights of way and much more.

Please join us to find out what has been going on in the parish; meet your Parish Councillors and have your say about our local area!

Parish Council Matters Arising

Proposed Thatcham North East Development

For those that have not seen the proposal, a brief synopsis “BPC Thatcham NE Brief” is on the www.buckleburyparish.org website, together with other relevant information.

Background

Local Plan to 2037. SP17. THA20. Hardly names to fire the imagination, or make you read any further, but they all have the potential to dramatically change the landscape in which we live - quite literally.

Central government requires West Berkshire Council (WBC) to build roughly 500-600 houses per year, and as part of the process of meeting that requirement WBC produces a Local Plan. The current Local Plan extends to 2026, and WBC are now consulting on the next Local Plan to 2037. Stage 1 consultations are completed and many of you have written letters expressing your concerns about it.

Those concerns about the draft Local Plan centre on Policy SP17, which would, quite simply, carpet the area to the north east of Thatcham with 2500 houses. The proposed area is called THA20, though is routinely referred to as Thatcham North East. Given its proximity to Upper Bucklebury, the AONB and the Common, it could equally be termed ‘Bucklebury South.’ Thatcham North East is planned to extend from Cox’s Lane in the east almost to Lawrence’s Lane to the west, and spread most of the way up the slopes between Thatcham and Upper Bucklebury. It is the equivalent of bolting a new town the size of Hungerford onto the side of Thatcham.

History

WBC had planned to meet most of its housing needs at a site near Grazeley. However, this site has proved undevelopable, and WBC were left with a shortfall in building land and a looming deadline for a new Local Plan. In the current Plan, Thatcham was to be exempt from development to allow it time to absorb the significant recent development. Now, midway through that Plan, the only way for Thatcham to evolve and gain the infrastructure it needs is for the addition (of a development the size) of Hungerford on its side. How Thatcham would evolve if Grazeley had been available is not clear, but Thatcham, and Thatcham North East specifically, has been selected to become an epicentre for development in the next few years. That bitter pill has been sugar coated with the promise of new schools and affordable housing and packaged as the only way to stop rampant development in the AONB. Describing Thatcham North East, WBC write “...there are very few negative impacts that developing the site would have

...” Many would disagree.

Impact of Thatcham North East

There is a bitter irony in that WBC fought against, eventually up to ministerial level, development of 500 houses at Siege Cross. This vigorous defence was partly mounted because of the potentially devastating adverse impact on the local environment and harm to the setting of the AONB. That same Siege Cross development is now contained within the Thatcham North East proposal, and WBC would now have us believe that a development five times larger would be an improvement to that same environment and the AONB setting!

There should be no doubt as to the potential impact of this proposed development. It would take a green field site and destroy the local environment and landscape, and adversely affect the AONB that WBC is required to protect. It would have no actual links to Thatcham town centre, would potentially dramatically increase the risk of flooding in the town, and inevitably lead to traffic mayhem. The damage caused would be irretrievable; there is no replanting an ancient woodland or replacing lost flora and fauna. We would all have plenty of time to consider these losses as we sit in a Thatcham traffic jam.

Consultations

WBC published their draft Local Plan in December 2020. Bucklebury Parish Council (BPC) engaged a Planning Consultant to ensure that all relevant areas of opposition were covered, and submitted a detailed and robust response. In parallel, a group of parishioners set up a Facebook page to encourage parishioners to write to WBC vigorously opposing the proposed development.

WBC are now digesting these responses and will issue Stage 2 consultation of the Draft Local Plan later in the spring. There is little confidence amongst parishioners that WBC will have listened to our concerns, or those from neighbouring villages and Thatcham, and made any meaningful adjustments to the development proposals.

Moving forward

It is fully expected that Thatcham North East will return in its current form in the next stage of consultation. BPC and the Facebook group have decided to work together to submit the best response for Bucklebury parishioners to this Stage 2 consultation. The combined group has formed as a Working Group of BPC (WG) and is tasked with organising that opposition response. The plan is to use attributes of the two teams, with parishioner help, to produce a compelling response. To best achieve this, the WG will undoubtedly require expert help from professional planning consultants. The WG is currently exploring liaison and joint working with other local parishes, Thatcham Town Council, environmental groups and local organisations to improve the response, and to share the costs of the expert advice that will so greatly bolster our case.

For this strategy to work there are two direct and real needs - people getting involved and money.

What can you do?

If you are undecided as to whether or not to become involved, please take a walk down Long Grove, or Cox's Lane, or Harts Hill and imagine what those green fields would look like covered in houses. Imagine the impact on the delicate ecosystems of the Common. Imagine sitting in the inevitable traffic gridlock in Thatcham, looking at the houses of Hungerford-on-the-Hill. Imagine reading about flooding in Thatcham. Then consider that other sites may be available at a lesser cost to the environment. Imagine then not doing anything to try and stop that, or at least not trying to find out more to gain a fuller picture. This is not about protecting "our" Common or "our" environment, but about ensuring they are protected for future generations. People must live somewhere, but there are brownfield sites out there that do not come at such a high environmental cost.

There will come a time when we will have to write again to WBC to try and persuade them onto a different course. But for now, we need volunteers to put up a posters, spread the word, deliver flyers, or use their skills or time to help research or write our response.

To receive information or offer help please email buckleburysaysno@gmail.com. You will be added to the distribution list for updates and if you wish to help, added to the list of volunteers. Updates will also be available on the parish website: www.buckleburyparish.org, via Facebook "Bucklebury Parish Against Thatcham NE Development" (<https://www.facebook.com/groups/411212780100239>), Twitter 'Bucklebury Parish Against Thatcham Development' but the handle is @AgainstParish, and Instagram (#saynotothatchamdevelopment)

If none of these methods are ones you use, but you wish to be updated or volunteer help, then please contact Helen Pratt, the BPC clerk, whose telephone and address are at the end of this Oaks.

Fundraising

Part of the opposition that the WG intend to mount will require expert advice. A complete understanding of environmental issues, traffic flows of 2500 houses, together with guidance on the best way to oppose a development such as this will require significant funding. A budget of £20,000 is the initial assessment for this stage of consultation.

At this stage, the WG has to assume it will need to pay for this unilaterally, until it can agree to share experts and associated costs with some of the other Parish Councils and Thatcham Town Council. Whilst sharing is an obvious aim, it will take time to organise.

However, we need to start work and so fund raising needs to start now. BPC have provided £1000 seed funding, but after that, the WG must raise its own funding, and that money will

have to come from our local people. No funding means no expert input, which inevitably means a weaker response. A weaker response increases the likelihood of the irretrievable damage to the landscape and environment that we are all so keen to preserve. It is difficult enough to ask for money at the best of times, but these are not the best of times. We recognise that family finances may be difficult and there are many other worthy causes crying out for funding. But if you have some spare money and you want to help protect the Common and the associated area from inappropriate development for future generations, please give what you can to support our cause. I say 'our' because it affects all of us.

You can complete a bank transfer to Bucklebury Parish Council account:

Account name: Bucklebury Parish Council

Account no: 01688915

Sort Code: 30-95-89

For the reference, please include your name or Thatcham North East if you prefer to remain anonymous.

If sending a cheque, please make it out to "Bucklebury Parish Council" and post to the BPC Clerk.

If you are able to donate - thank you from all of us. If not, then maybe you can donate time or skills? Every donation - large or small - will help oppose this unwanted development. For completeness, should there be any donated money left over when this entire process is concluded then, after consultation with all parishioners, BPC will use any excess for parish benefit.

To close

If you have questions about Thatcham North East, want to be involved, want to be kept updated, or want to donate money or time then please check the www.buckleburyparish.org website or email buckleburysaysno@gmail.com.

Thank you.

Tim Slatford - Bucklebury Parish Council

Appraising the Only Conservation Area in Bucklebury

The only designated conservation area in Bucklebury parish is the very small and much photographed one in the village around the church of St Mary The Virgin, which is the very heart of the old parish of Bucklebury. It stretches from the triangle with the black and white signpost up to the end of the Old Vicarage garden and comprises 4 listed buildings including the church; the churchyard; the two semi-detached cottages opposite, and all their gardens (see attached map).



The purpose of a conservation area is to preserve its special interest for the future. The main advantage of being in a designated conservation area is the extra protection it provides at a local level when planning applications are being considered, something we should all bear in mind when confronted with plans for 2500 houses on our doorstep! There is also some evidence to suggest that properties in conservation areas are more likely to retain their value. Of course, home owners have to be aware of the guidelines around conservation before making any changes to their properties and surroundings, but this is not impossible if the proposed

changes are in keeping with the area, and can sometimes be considered to be an improvement.

There are 53 conservation areas in West Berkshire, of which the one in the village is one of the smallest. Many of these areas were designated in 1971 but several of them, including ours, had no written justification, and even if they had been it has now been lost. WBC has a responsibility to appraise these areas to see if they still merit the designation and advise whether they should stay the same size, be enlarged or reduced. New conservation areas can also be considered, and of course there are other pretty and historical areas in Bucklebury which could merit consideration.

Last year, WBC asked parish councils to be responsible for the appraisal of their conservation areas and Bucklebury has been the first to get going. Training was initially offered but has not been possible because of COVID, so it has been a steep learning curve. A working group was formed of 3 parish councillors (Lindy Clarke, Hilary Cairns and Fiona MacCallum), one History Group member (Wynne Frankum), one resident in the conservation area (Russ Holland) and the previous church warden who is an authority on the history of the church (John Tennant).

The group has met a couple of times in person when allowed and by Zoom, and has carried out the required comprehensive survey in three pairs during November and December. Observations were required under various headings: spaces; trees and landscapes; buildings; views; ambience. We had to comment on location, population and activities, landscape setting, relationship of the conservation area to its surroundings, layout and street pattern, spaces (many sub headings), the contribution of trees and vegetation, boundaries, buildings- architectural interest and built form, setting, and views, and the contribution of both positive and negative aspects. Needless to say, despite it being a small area, it took a long time to survey.

The completed forms and comments are now all online and have been returned to the chief conservation officer at WBC for comment before proceeding to the final report. A draft of the latter will be circulated to those living in the conservation area and nearby residents as well as to all parish councillors before being submitted to WBC for approval and ratification. The draft will also be available to view on the parish website.

If you have any comments about the village conservation area, or you live in an area you would like to be considered for designation, please contact one of the parish councillors.

Lindy Clarke: Lindy.clarke@live.co.uk
Hilary Cairns: hilarycairns@aol.com
Fiona MacCallum: FMac108@goolemail.com

Speeding in the Parish

Speeding on our roads remains a priority issue for Bucklebury Parish Council. We have been limited during lockdown as WBC ceased lending the Speed Indication and recording Device (SID) equipment. This situation is likely to ease soon and we will look to conduct another SID campaign in the Parish. BPC are looking at the shared purchase of our own SID to improve availability to our Parish in the future. If any of you are willing to help with SID deployment please contact BPC (David Southgate on david@sogat.net). TVP have very recently announced a new pilot initiative regarding empowering local Community Speed Watch groups to be able to use hand held devices. *“Community Speed Watch is now to be driven from the PCC’s (Police & Crime Commissioner) office. With a direct mandate, that the due is in the title, Community. With ever increasing pressure being loaded onto front line officers the time has now come to promote the concept across TVP. Taking the emphasis back into the community, releasing officers/ PCSO’s back to the front line. The community as a whole know the issues with speeding motorists and in some cases the sad consequences.”* This is being introduced initially in Buckinghamshire followed by Oxfordshire and then Berkshire. TVP will provide insurance cover, training, equipment and support once established. This is a very recent development and BPC will be working with TVP to see what needs to be done in preparation and when we may be able to participate in the pilot which is prioritised based on 2019 speeding data.

David Southgate—Bucklebury Parish Council

Wild flowers in the Hockett Field

Some parishioners may not be aware of the existence of the Hockett field, which is situated on the south side of byway 67 which runs from Cox’s lane to Carbinswood Lane and is on the edge of Bucklebury common. It is a large, open and sunny field which was left to the parish in 1950 for informal recreation. Bucklebury Parish Council is its trustee, and has managed it as an unimproved hay meadow being cut once a year. It is a haven for wild life and popular with walkers and horse riders.

During the last year of COVID restrictions and wanting to make the most of the outdoor facilities we have, the council decided to take advice about enriching its wild life and turning part of it into a wild flower meadow, and at the same time, making it more attractive to residents by providing a seat or two and improving the access.

An initial visit by Charles Flower, a wild flower specialist, was undertaken last August. He suggested a trial of a 3 metre strip right along the southern end of the field in front of the northern facing hedge, and including a triangle at the eastern end. The combination of hedge and wild flower strip is hugely beneficial to wildlife.

The plan is to start work in May this year by topping the 3 metre strip as low as possible, and then rotovate or disc during May to August to reduce the weeds, followed by the broadcasting of wild flower seed in September (species to be advised by Charles Flower). In its first year it will be kept mown as low as possible until the end of June, then allowed to grow away. In subsequent years it will be topped or mown in early May and again at the end of the month, and then cut and cleared at the end of the season.

We hope in this way that the Hockett field will become a more attractive place for residents to visit and linger, and for wildlife, with increased biodiversity. If the trial is successful, other areas in the field may later be converted to wild flowers.

Lindy Clarke & Anne Hillerton—Bucklebury Parish Council

The Fred Dawson Playpark and Bucklebury Bike Track

The Fred Dawson Playpark continues to be a very popular recreational destination for our families. Thank you very much all users who now take all their litter home. There is rarely any to pick up from inside the park and the occasional piece, I think, is something fallen from a pocket rather than intentionally dropped litter.

Thank you very much to the community-spirited people who come with a bag and gloves and pick up from the surrounding area. The slope behind the bike track shelter remains a problem area. Please ask your teens to take their litter home or put it in the bin at the front of the hall. A few people have kindly helped out picking up litter from down there as my knees would not get me back up the slope nowadays!

The Bike Track should be open again by the time you read this, after being closed because of the coronavirus restrictions. This has caused such a lot of work and distress. A small number of people with electric bikes have, during the closure, ignored the signs and damaged the surface. Others have decided they are above the law and continued to use the damaged track surface. As I write we are awaiting the contractor to repair the surface and to remove the shortcuts people have made. These are considered by RoSPA (Royal Society for Prevention of Accidents) to be dangerous. Our track is inspected annually by a RoSPA inspector, as is the playpark

We have updated the signs to make our rules clearer and ask that everyone reads and abides by them. They are there to allow our children to have fun safely and to prevent unnecessary damage to the track. The track is expensive to maintain and the cost comes out of the precept which is the portion of your council tax allocated to Bucklebury Parish Council.

Anne Hillerton — Bucklebury Parish Council

Planning

When a planning application is submitted to WBC, assuming it is valid, BPC are consulted. The following is a list of the planning applications which WBC has notified BPC of over the last seven months and which have therefore been considered by your councillors. Even during lockdown, councillors have done their best to consider each and every application, even if there was only a 'walk past' during carefully planned exercise. Clearly for some applications, which are not visible from Rights of Way this is more difficult. In all but one of the cases where BPC objected to the application, but it was subsequently approved by WBC, changes were made to the application in line with the comments made by BPC prior to it being approved. So as you can see, generally planning officers agree with the comments BPC makes.

Helen Pratt—Clerk to BPC.

Reference	Description	BPC Status	WBC
19/00832/REM	<u>Land Adjacent to Summerfield, The Ridge (Adjacent Parish)</u> Approval of reserved matters following Outline permission 16/02529/OUTD - Change of use of part of existing agricultural field to residential and the erection of 5 no. detached dwelling houses with ancillary garages, access, parking, landscaping and associated works. Matters seeking consent - Access, landscaping and scale.	Object	Refused by WBC. Allowed on appeal.
20/00603/HOUSE	<u>Orchard Gate, Little Lane.</u> Replacement pool building.	No Objection	Approved
20/01338/OUT	<u>Woodside, Long Grove.</u> Outline application to erect a single dwelling on the site with some matters reserved. Matters to be considered: Access.	Object	Refused
20/01380/HOUSE	<u>Oak Lodge, Upper Woolhampton.</u> New first floor to existing bungalow, two storey rear extension, alterations to existing single storey roofs and demolition of existing garage.	No Objection	Approved
20/01480/FUL	<u>Glenvale Nurseries, Hungerford Lane (Adjacent Parish).</u> Rural diversification projection comprising demolition of existing outbuilding and polytunnels and erection of 1 no. B1/B2/B8 building with associated access track and parking area.	No Objection	Approved by Eastern Area Planning Committee
20/01506/HOUSE	<u>Chapel Row Farm.</u> Proposed single storey conservatory to the front of the former stable block.	No Objection	Withdrawn
20/01493/HOUSE & 20/01494/LBC2	<u>Cherry Orchard Cottage, Hatch Lane.</u> Single storey side extension.	Object	Approved
20/01572/HOUSE	<u>Bole Cottage, Chapel Row.</u> Single storey side extension and porch. First floor extension within new roof space with new dormer and Velux windows. Conversion of existing garage.	No Objection	Approved
20/01629/FUL	<u>Ivinghoe (Adjacent Parish)</u> Replacement dwelling and landscape enhancements.	Object	Refused
20/01695/HOUSE	<u>Imagine, Upper Bucklebury.</u> Proposed enlargement of existing bathroom dormer window and addition of canopy porch to house and garage entrance.	No Objection	Approved
20/01643/HOUSE	<u>2 Berry's Road.</u> Conversion of integral garage incorporating a front elevation change.	No Objection	Approved
20/01660/HOUSE	<u>Wayside, Hatch Lane.</u> Proposed new build garage.	No Objection	Approved
20/01682/CERTE	<u>The Annexe at Hawkridge Farm.</u> The application is for the formation of a separate dwelling at Owl House following four years of continued use.	No Comment	Lawful

20/01703/FULMAJ	<u>Shooters Lodge, Midgham (Adjacent Parish)</u> Single storey rear extension to existing garage and conversion to Annexe. New single storey pool building with glazed links to Annexe and existing house.	No Objection	Refused
20/01815/HOUSE	<u>Greenwood, Hatch Lane.</u> Single storey side extension to provide ground floor shower room. Retrospective approval for the garage as built with a flat roof, rather than pitched.	Object	Refused by WBC Allowed on appeal
20/01885/FUL & 20/01886/LBC2	<u>Barn, Hawkridge Farm.</u> Change of use of listed barn to dwelling, revised access and erection of car port.	Object	Withdrawn
20/01823/HOUSE	<u>Dogwood Cottage, Bucklebury</u> Single and two storey rear / side extension to form additional habitable space. Alteration to ground floor front windows.	No Objection	Approved
20/02102/HOUSE	<u>High Barrow, Paradise Lane.</u> Erection of a car port.	No Objection	Approved
20/01910/CERTE	<u>Hillfoot Cottage.</u> Change of use of land to garden.	No Comment	Lawful
20/02342/HOUSE	<u>1 Paradise Way.</u> Erection of a timber single story granny annexe for ancillary use to the main dwelling.	Object	Planning permission not required
20/02341/CERTP	<u>1 Paradise Way.</u> Use of the land for siting a mobile home for use ancillary to the main dwelling.	For Information only	Approved
20/02500/HOUSE	<u>19 Paradise Way.</u> Demolition of existing one storey side extension and erection of two storey side extension and associated works.	No Objection	Approved by Eastern Area Planning Committee
20/02512/HOUSE	<u>Enborne Garth, Little Lane.</u> Enlargement of loft space, single story rear extension and front porch.	Object	Approved
20/02534/FUL	<u>Homerstead House, Hawkridge Hill (Adjacent Parish).</u> Replacement dwelling.	Object	Approved
20/02600/CERTE	<u>The Annexe at Manor View, Hopgoods Green.</u> Self-contained first floor flat with associated amenity and parking areas.	Object	Refused
20/02735/HOUSE	<u>Hytaville, Byles Green.</u> Section 73a: Removal of Condition 4 (Tree Protection Scheme) of previously approved application (18/00213/HOUSE): Proposed extension and refurbishment of dwelling.	No Objection	Approved
20/02697/HOUSE	<u>Kings Copse House, Southend.</u> The proposed works include the installation of new pedestrian and vehicle gates and piers.	No Objection	Approved
20/02771/FULD	<u>82-83 Roundfield.</u> Erection of 2 No. semi-detached dwellings and one detached bungalow.	Object	Approved
20/02767/HOUSE	<u>Brookwood House, Hatch Lane.</u> Single storey rear extension to enlarge kitchen and create utility room.	No Objection	Approved
20/02830/HOUSE	<u>Brackenwood, Little Lane.</u> Extension to north elevation with relocated entrance porch and updating principle elevation.	No Objection	Approved

20/02840/HOUSE	<u>Beechlyn, The Slade.</u> Removal of an existing corrugated iron single bay garage to be replaced with a double bay oak frame gable end Garage.	No Objection	Approved
20/02887/HOUSE	<u>Rose Bank, Marlston.</u> Erection of detached garage with ancillary utility/laundry room and home office.	No Objection	Awaiting decision
20/02967/HOUSE	<u>Greenwood, Hatch Lane.</u> Retrospective planning for the garage as built with a flat roof rather than pitched with the same floor area and location as approved under 15/02274/FUL.	No Objection	Approved
20/02913/FUL	<u>Heatherdene, Bucklebury.</u> Construction of an all weather riding arena and change of use from agricultural to equestrian.	No Objection	Approved
20/02849/FUL	<u>Land adjacent to Thatchers, Chapel Row.</u> Proposed replacement storage shed for use to store tools and equipment for maintaining land.	No Objection	Awaiting decision
21/00189/HOUSE & 21/00190/LBC2	<u>The Dell, Byles Green.</u> Detached outbuilding.	No Objection	Approved
21/00281/LBC2	<u>Wallins, Westrop Green.</u> Removal of poorly executed (non original) existing painted porch structure over front entrance door, comprising Oak posts and 4x2 studwork; replacement with traditional Oak Frame structure of similar size and proportions, plus reinstatement of clay tiled roof.	No Objection	Approved
21/00417/HOUSE	<u>The Well House, Upper Woolhampton.</u> Rebuild existing conservatory to rear elevation. Extend existing window W1 to rear elevation. New window to side elevation W2, replace existing cladding to dormer on front elevation.	No Objection	Awaiting decision
21/00304/CERTE	<u>The Scout Hut (Angel's Corner).</u> We seek a lawful development certificate for a storage container, wooden two cubicle toilet building and the associated cess pit.	No Comment	Awaiting decision
21/00522/HOUSE	<u>Thatched Cottage, Scotland Corner.</u> New detached Orangery.	No Objection	Awaiting decision
21/00484/COMIND	<u>Vanners.</u> Erection of agricultural building to support the agricultural use of a 5 acre paddock for livestock.	Object	Awaiting decision
21/00237/FUL	<u>Travellers Rest Farm</u> Application for change of use of field currently used for horse grazing to be used as a secure dog exercise field.	Object	Awaiting decision
21/00548/HOUSE	<u>Redwoods, The Avenue.</u> Conversion of existing, detached, double garage (with room over) into ancillary annexe accommodation with the addition of a lean-to cycle/storage shed.	No Objection	Awaiting decision
21/00511/HOUSE	<u>4 Briff Lane.</u> First floor dormer window to front of house.	No Objection	Awaiting decision

Recycling

DO YOU RECYCLE?

Yet again YES, you do! Having not been able to let you know just how much you did to the end of the year recycling plastic bottle tops (due to the fact there was no Oaks magazine) the Parish Council can now let you know that a total of **74.27 Kgs** has been sent out for recycling, the latest batch was sent on 25th February 2021 to the recycling company in Cold Ash and to Terracycle in Thatcham, and believe me there is plenty more to send out soon! Sadly a huge number of companies still do not put recycling codes onto bottle tops, so some have to go to incineration for heat generation. Obviously, it is not high on anyone's agenda who is in business right now to ensure recycling grades are printed onto plastic tops, but increasingly several companies whose products you use are doing so now – 'Innocent' to name one, this is good news as their tops contain a lot of plastic!

To help understand the number of tops that you have donated for recycling, it is approximately **37,135** since we started in 2019 – next time you see someone having UPVC windows fitted you can wonder if any of your bottle tops are inside the inner structure of the window, which is where a large number go!

Hilary Cairns – Bucklebury Parish Council

Bucklebury Meadows

The meadows have been well used over the latest lockdown as people have taken the opportunity to exercise themselves and their dogs in the areas that have not been completely waterlogged! There has been plenty of standing water over the winter, making wellies essential equipment for any walk through them, but it is drying up as the weather improves.

While we live in beautiful countryside, not everyone has the opportunity to easily access the common. To help provide access to some green space, the entrance to the Meadows from Broad Lane has been opened up, and a kissing gate put in between the smallest meadow and the middle one. Grass around part of the smallest meadow has been cut slightly shorter, which when the weather improves will provide a play space for younger children. Benches have been purchased with a grant from WBC, and Gary at the Cottage Inn has kindly loaned some tables, so there is space to sit and relax, and enjoy the peaceful setting. Dog walkers are very welcome to walk through, but, as this is a space for families to use, please keep your dog on a lead in this meadow and clear up after it.



Hopefully, as the weather improves, the ground dries, and

wellies are no longer essential, the meadows will become a regular meeting place as well as outdoor space to enjoy. The next objective is to improve access from Mortons Lane into the middle meadow, to make it wheelchair friendly, and link that with the provision of further benches when funding allows.

If you have any comments about the opening of the little meadow; whether you think it a good idea in these days of COVID restrictions, are pleased about the access to green space or would perhaps like to assist in the provision of another bench, possibly in memory of a loved one, please email clerk@buckleburyparish.org.

Many people are finding the meadows a pleasant place to walk and sit in; if you have not yet wandered in do try it on a sunny afternoon.



Tim Slatford & Anne Hillerton — Bucklebury Parish Council



Is your daughter aged 10-14
and interested in a free taster session at
Bucklebury Guides?

If so please email
buckleburyguides@gmail.com

We currently have a couple of places
available to start after Easter!



West Berks District Councillor

Bucklebury Ward contains the parishes of Bucklebury, Midgham, Stanford Dingley and Woolhampton. Our District Councillor is:

Graham Pask Tel: 01635 864023

Email: graham.pask@westberks.gov.uk

WBC Councillor's Report

I want to start my report by reflecting on the most difficult year most of us can ever remember. A year ago, as I write, we were starting our first lockdown and the future was starting to look very different. Our community very quickly came together to help those in need by helping with shopping and collecting prescriptions or just being there to support our neighbours. Sadly a number of our residents contracted covid and I know that some of you have lost much loved family members or friends but let us hope, now that the vaccination programme is well under way, that life can return to a degree of normality this year and we can look forward to meeting each other again in our homes. My heartfelt thanks to you all!

Most people reading this report will know that WBC is in the process of updating the Local Plan and the first public consultation finished in early February, a second consultation will take place in the summer. I want to give some background information on how the emerging Local Plan has reached this stage. I am writing this in the spirit of reflecting the level of opposition and how I can help the parish oppose what is contained in the plan for north east Thatcham and to give suggestions on what may be the best options on which to focus. As I reported a year ago there are no plans to build houses within the parish of Bucklebury.

Our current Local Plan was fully adopted in Autumn 2017 (the "Core Strategy" predating this) and laid out where development should take place up to 2026. The main strategic site was for up to 2,000 houses at Sandford, south of Newbury. A year before this time developers/landowners made an application to build around 500 houses at Siege Cross (at the bottom of Harts Hill on the left) and for 300 houses around the Regency Park Hotel. Both of these applications were refused, mainly on the basis that they did not form part of the new plan, and a joint appeal was lodged in November 2016. Surprisingly the appeal was allowed by the planning inspector on 4th April 2017 but the decision was called in by the Secretary of State for determination and was refused on 27th July 2017. The applicant sought leave to appeal that outcome by Judicial Review but this was not allowed.

The inspector considered all aspects of the application, particularly the effect on the character and appearance of the countryside and the setting of Thatcham and Upper Bucklebury and the AONB, and concluded there was no clear evidence that the development would be harmful! Other issues such as flooding, "economic and social sustainability" and incursion into the rural countryside were also addressed and not considered sufficient to refuse the application.

Sadly what this means is that a green light was tentatively given

for a development of 500 homes in northeast Thatcham and I am able to give more details if you wish. The difference now is that the site has been greatly extended to the east and west and, on that basis, I have asked our Planning Policy officers to re-examine other sites such as the Colthrop proposal south of the railway which includes a proposal for a bridge over the railway and river/canal. The focus on Thatcham changed last year as the very large Grazeley development being drawn up was said to be undevelopable due to the changes in the emergency planning zone (DEPZ) around Aldermaston and Burghfield.

I must emphasize that I fully support a robust Local Plan (but it has to be the right one!) or we will end up with planning decisions determined on appeal as neighbouring Wokingham has found to its cost. We do not want potential large scale development with very little infrastructure in our rural villages which would be a real possibility without an agreed plan.

I will continue to work hard to represent the level of opposition to the NE Thatcham proposal, I live here too and would be just as affected as anyone!

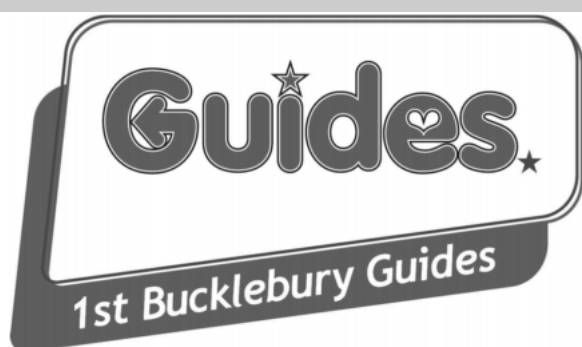
At the end of March the Traffic Regulation Orders (TROs) which were applied to most of the byways in Bucklebury will end for this season as they can only be put in place for six months. Last autumn WBC invested in a number of fixed and removable bollards which were used in place of the unsightly Heras fences and I am hopeful more funding can be found to place more of these over the summer to deter illegal access by the 4x4 vehicles. There have been a number of reports of such illegal driving over the last six months but I hope you agree our measures have been mainly successful, the police have been called out several times and I know of at least two 4x4 vehicles being confiscated.

Even without the TROs it remains illegal to damage the surface of a byway or to drive over Bucklebury common so please continue to report such activity to the police who will take action subject to their operational priorities at the time. Our focus this year, in conjunction with the Bucklebury Estate is to make off-roading even more difficult by forming ditches and banks in some areas and by placing fallen trees adjacent to our lanes such as around Ramsbury Corner where access to the common is easy. We will, of course, ensure easy access for walkers and riders. Please refer to The Oaks published in February 2020 (available on the BPC website under publications) for the detailed article I wrote.

Please contact me if I can be of help on any West Berkshire Council issues, I am always happy to talk!

Graham Pask—WBC District Councillor.

Family



Bucklebury Guides have had a busy start to the year. We have been meeting virtually over Zoom, but we haven't let that stop us from having fun!

We started off the year working towards our 'Climate Change' badge and learnt about recycling locally, single use plastics, eco alternatives and we all made bees wax wraps. We celebrated Burns Night when we made shortbread and discovered that some of our Guides have family tartans. This was one of the first instances where we found Zoom worked really well as parents were able to find photos of the family tartans to share with us all.

We also celebrated Chinese New Year by baking Chinese New Year cookies and attempted some origami. We finished off the half term with a 'Pancake Challenge' badge where the Guides designed their own pancakes (including a bright green pancake!) and saw Guides and parents sharing videos of them flipping pancakes!

Over half term we put together a digital detox pack for the Guides which contained a wide range of activities to inspire girls to spend much needed time away from their screens. In the first meeting after half term, we all shared what we had been up to away from screens which included puzzles, painting, drawing, baking and getting outside.

After half term we celebrated World Thinking Day, one of the most important dates in the Guiding calendar where we celebrate Girl Guides around the world. We learnt about the history of Guiding and how the Guide Promise varies around the World before learning about world peace and what can be done to promote it.

We have also been working towards our 'Stay Connected' challenge badge. This started with a virtual bake off where everyone was given a basic cookie recipe which they had to adapt by adding extra ingredients such as fruit or chocolate drops before icing them. We had an amazing selection of cookies which included orange and dark chocolate flavoured

cookies, train cookies, dairy free cookies, marbled cookies and a giant cookie decorated with the Guiding Trefoil! We spent an evening making friendship bracelets which proved challenging for Guides, Leaders and parents but the Guides shared useful tips with each other, so we all



got there in the end and everyone had a friendship bracelet to gift to a friend! To finish off the 'Stay Connected' challenge badge we designed, made and flavoured popcorn from scratch on the hob (lots of golden syrup was eaten that evening!) followed by a games night which was thoroughly enjoyed by all.

We continued our 'Climate Change' badge with an evening dedicated to water conservation involving an experiment to simulate water filtration, creating the water cycle in a bottle and making a rainwater gauge. We are celebrating the end of term by meeting up in person for the first time in months for an outdoor games night with s'mores!

Throughout the term we have had an ongoing weekly rubber duck photo competition which has seen rubber ducks go up high in drones, set in jelly, balanced on pets' heads, out on walks, in washing machines and surrounded by rainbows. This has been thoroughly enjoyed by both the Guides and their families. Each week we have also had a short 5 minute duck challenge during the meeting. Examples included making a parachute for their duck, collecting as many things the same colour as their duck and making an item of clothing for their duck to wear.



Bucklebury Guides meet on a Monday evening 7-8.30pm during term time. Our usual meeting place is the Victory Room, Bucklebury Village. We are part of GirlGuiding UK for girls aged 10-14 and we have 4 leaders who volunteer their time throughout the week to plan, organise and lead activities.

We currently have a couple of spaces to start after Easter. We would love to welcome some new Guides to join the fun and adventures throughout this coming term and into the future. If your daughter would like to join us (or to arrange a taster session), now or in the future, please email buckleburyguides@gmail.com.

Vicky Pratt—1st Bucklebury Guides

Bradfield Rainbows & Brownies

As we write this and reflect over the last year, and what a year it has been, we've realised how strong Girlguiding is in the area, even in the challenging times we have faced over the last few months.

I clearly remember having to suspend our face to face meetings last March and we had only held one meeting with our new Rainbow unit in Bradfield, thinking we would be back in a few weeks, but that wasn't to be the case. As we headed into the summer term we all heard about this platform called "Zoom" and began to think could we use this and after setting up an account, we haven't looked back since! Our Rainbows and Brownies, and leaders have embraced the technology and we all have continued with our Girlguiding journey.

We have done scavenger hunts, arts and crafts, games, bingo, made cheesecakes, butter and have enjoyed visits from the Cats Protection, our local Girlguiding peer educator looking at mental health and building resilience and body confidence, and the girls loved a visit from Lisa the goat. From September we were able to return to face to face Guiding, and it was amazing to see the girls in person again! We ran our units from the car park of the church and activities ranged from dance routines with glow sticks to games and making lanterns. The Brownies even had a visit to see the alpacas in Mortimer. But I think the most important thing was just being there, a much needed little bit of "normal" for our girls and leaders alike.

As we think about the summer term ahead and being able to see the girls in person again, one thing I do know is that our units will continue to offer an amazing programme of adventure, friendships, new opportunities and fun for our local girls and young women.

If you are interested in finding out more about Girlguiding, please email helenguides@yahoo.com for Rainbows and secondbradfieldbrownies@yahoo.co.uk

Gemma, Aisling and Helen—Bradfield unit leaders

West Berks Ballet School

We managed to squeeze in some very important ballet exams right at the end of our Autumn term which resulted in early Christmas presents for 19 of our senior dancers.

Nine girls took their Intermediate, an exam intended for those following a vocational path. Six girls were awarded Distinction and the others received Merit – many congratulations girls on achieving such a high standard following the rocky road you followed in the autumn of 2020.

Philippa was a lone Grade 6 and we hope she was proud of her 98% - we certainly were!

The Grade 5s were also a fine set, with 6 Distinctions and 3

Merits – a lovely end to our year.

Well, like everywhere, Spring Term 2021 has been a Zoom! Thank you everyone for the enthusiasm you have shown in your Zoom lessons! It has been lovely to see your smiles and how hard you have worked. We have become familiar with your kitchens, living rooms & bedrooms and even got to know your dogs and cats. Sometimes we spy other members of your families joining in with the classes but we cannot wait to be together again in Bucklebury Memorial Hall for the Summer Term.

There are lots of exciting dancing plans afoot. Claire is pulling out all the stops to finish the video version of The Wiz and, (Government directions permitting) she will announce her dates for the two weeks of Summer School. Jane, Holly & Lucie will reveal details of our next ballet production, to take place in the Summer half-term of 2022 (the theatre is booked), with rehearsals commencing this September.

This Summer Term we are also hoping to be able, at last, to welcome those 4 & 5 year olds who have been waiting to join us. We shall message all those on the waiting list but if there are any other budding ballerinas reading this who might like to start, please make contact.

We are releasing a video at the end of April, to WBBS families, of our plans for the Summer Term. In the meantime we wish you all a Very Happy Easter; stay safe & well and once again, many thanks for your kind words, smiley photos & support during the pandemic.

Jane Scholl, Claire Bowden, Holly Unnuk & Lucie Wilson
www.wbbs.org and facebook.

Bucklebury Primary School

A year ago I wrote about how we had responded to the first national lockdown;

Well done to everyone for how hard you have worked in the last weeks. It has been an extraordinary situation that has demanded so much of all of us. Thank you to parents and families, staff and most especially every single child of our wonderful school family... I miss the rhythm and routine of school life terribly. I am as desperate as each of you to be together in body as well as spirit.

Yet we are not; as a result, the strength of our family will truly be tested. At this time we have a job to do. That is to stay at home, support the NHS and save lives. I believe in each of you.

I know you will continue to do all you can to ensure learning continues for the whole child in every child.

I went on to say;

We have no indication from the government exactly how long the current arrangements will stay in place. We are planning for it to at least extend to May half term. As such, prep sheets will endeavour to deliver the full range of the content as far as possible within the restrictions facing us.

Interestingly I also commented;

We do not intend to use any video conferencing between staff and children. This is in keeping with primary schools across West Berkshire.

Writing this now, just before we welcome all children back to the classroom once again, it is clear that none of us expected COVID-19 to affect our lives to the extent that it has. Daily life, finances and health have all been hugely affected. It has lasted such a long time.

Our working definitions of what school is and how learning can happen have been completely rewritten. This has been most tested at the start of 2021 as we faced a further period of school partial closure. Children, families and staff have done amazing things to keep learning going. And yes, we did embrace video too!

It was excellent to be together in school during the autumn term, albeit under the auspices of careful routines and procedures. It was gut-wrenching to be apart at the start of 2021.

As Her Majesty the Queen noted in her address to the nation last year, 'we will meet again'.

On Monday 8th March 2021, the children did meet again. And what a joyful and delightful day it was! With the vaccine rollout continuing to gather pace, we do hope that there need be no more disruption to our children's education.

Together, throughout this pandemic, we have worked to ensure learning goes on and no child is defined by this unprecedented event. Thank you for all each and every one of you has given. You will go down in the history of our school and the memories of every child, family, staff and governor.

To mis-quote Aneurin Bevan, father of the NHS;
"COVID-19 is neither an indulgence for which children have to pay, nor an offence for which they should be penalised, but a misfortune the cost of which should be shared by the community."

Together, we have safeguarded the education of every child. Together, we have protected the growth of the whole child. Together, we will go on to ensure every child can flourish and shine in the years ahead.

Take care. Look after each other.

Kind regards

Mr A. Higgs

REMAP West Berkshire

Remap Berkshire is once again able to design and make free bespoke gadgets and equipment for anyone in the Parish with a disability or special need where nothing suitable is otherwise available commercially.

There is no charge and no tedious forms to fill in - i.e. no extra load on users, referring professionals or charities.

We are mostly retired engineers and craftsmen and women with the expertise and practical experience to identify problems and come up with individual solutions.

Problems are often referred by Occupational Therapists, where we can focus on improving someone's quality of life, not just on their basic needs, but anyone can ask for our help.

Lots of examples of our work can be seen at <https://www.makeability.org.uk>.

I live in the Parish and have developed a number of solutions for children in conjunction with the dedicated physical needs support units at our local schools.

There are three volunteers located in the wider area, but demand for our services means that we are always on the lookout for additional volunteers.

If you know someone that might benefit from our help, or are able to join our team then please do get in touch with our Case Officer, Robert Monk on 07790 127 123 or at Berks.CaseOfficer@remapgroups.org.uk.

Andy Pinkard

Groups & News

Mah-jong

MAHJONG - I am wondering if anyone will be able to remember the rules when we can eventually resume our afternoons of fun? I am afraid that this won't be for a few months yet and I will let everyone know in advance of the first meeting.

I hope that you are all keeping well and have had at least one jab! Stay safe.

Helen Relf
grannyrelf@btinternet.com
01635 867619

Bucklebury Walkers

I hope everyone has been keeping well over the past year and kept up with walking. Maybe you have found lots of different paths that you can share?

At the moment it looks like we will be able to meet in our larger groups from 17th May so I hope that the walk on Thursday 3rd June will be able to take place. We will meet at The Cottage Inn either at 10.00 or 10.30 as we did before lockdown! Can we remember those times?

I have IT problems and am not sure whether I have everyone's email address so could anyone interested in walking please email me grannyrelf@btinternet.com so that I can get back in touch.

We will also need a leader for the 10.00 walk on June 3rd plus all other 10.00 walks. Again please let me know and I can do a list.

Stay safe everyone and hopefully we can meet in a couple of months.

Helen Relf
01635 867619
grannyrelf@btinternet.com

Bucklebury and Marlston Horticultural Society

Asset Management

Over the last twelve months of enforced confinement our gardens have been a priceless resource. This Spring, if the weather is fine, it is sure to pay dividends.

The Spring Show looks doomed. But for those of you with a contender for the "daffodil challenge" we are proposing an informal showdown in the Memorial Hall car park at **noon on Saturday 3rd April**. We will have to remain outside, no facilities will be available, but if we keep apart in groups of six we should manage to keep within the rules!

The Committee has decided that we will NOT be holding our Summer Show in July as the Hall is already in use on our usual Saturday and it's not clear that sufficient restrictions will have been lifted by then.

It is hoped to hold an Autumn Show on 11th September after the Committee has considered its viability when some restrictions on socialising have been lifted.

Reflecting on 2020, our first talk in February by Tony Trafford, a genuine Beefeater, was hilarious. Our wine based winter Social was also very successful, albeit a distant memory. The final demonstration of wood craft proceeded amidst the confusion of pending lock down, was well worth our perseverance.

Don't forget that the nurseries and garden centres listed in our book remain open for your gardening requirements. Our Century Club continues to function and membership is free for a trial year, contact John Wright (01635 863429).

Happy Gardening.
Derek Matthews (0118 9712587)

Berkshire Women's Aid – Fundraising Event in Bucklebury

I am sure that many of you will have heard Labour MP Jess Phillips on International Women's Day when she read out a list of 118 women killed by men since the last International Women's Day. Sadly, two women a week are killed by a current or former partner in England and Wales alone and this has not changed for many years despite the hard work of charities like Berkshire Women's Aid.

Berkshire Women's Aid was founded in 1974 by two women, one of whom is still a trustee. She recalls the reason she started this charity which was when she met a woman who was regularly abused by her husband and said that she took the blows "so that the children don't."

Although based in Reading, Berkshire Women's Aid's refuges and outreach services help women and children throughout Berkshire particularly as victims usually must leave their local area to escape their abuser.

Our **9 refuges** offer accommodation for single women and those with children. Our recently built refuge caters for larger families as this reflects the profile of an increasing number of women who seek help. As has been mentioned in the press, the recent lockdowns led to an increase in domestic violence cases and BWA refuges saw an increase in demand. We are proud to say that via various means (such as insisting that newly-arrived women self-isolate in a refuge dedicated to this purpose) we have not had a single case of Covid 19 in our refuges.

For women in refuge and those either leaving refuge or not feeling the need for accommodation our **Outreach Workers** provide continuous contact and counselling and this has continued at a distance throughout the pandemic. Outreach Workers will support a woman in various ways such as obtaining a Non-molestation Order, making a Family Court application, active participation in child protection issues, liaising with other agencies. They help a woman to stay safe in her home and create coping strategies whilst in an abusive relationship and help emotional recovery post-separation. Confidence-building sessions, emotional support and advocacy at court hearings are also part of BWA's outreach work.

BWA offers courses within and outside of refuge which aim to help women recover from their experience and move on in their lives. As a Women's Aid organisation BWA is unusual in offering courses for male perpetrators in which we aim to stop the cycle of reoffending and indeed our statistics show a high rate of success in this area.

Children are of course the witnesses to and victims of domestic abuse and research shows that such children are 50% more likely to fail to achieve at school, many ending up with mental health issues and addiction problems. BWA's Children and Young People Workers organise group work within and outside of the refuges for different age groups. These sessions aim not only to help children recover from their traumatic experiences but also try to show older children the difference between a good relationship and abusive one. A very high percentage of boys who have witnessed domestic abuse go on to become abusers themselves – BWA tries to stop this cycle of abuse.

Increasingly BWA's 'clients' have what are called 'complex needs'. This means that they might be addicted to alcohol or drugs and in fact may have become abusive themselves. BWA works with specialist agencies to support these women and has recently appointed a Vulnerable Women's Worker. The women accessing this service have often fallen through the gaps of more mainstream provision so the aim is to help her access the services she needs. During the pandemic, the vulnerable women's worker has continued to support clients with the practical, day to day elements of their lives at a time when services across the country were stretched.

Returning to Jess Phillips – she concluded:
“if as many people died every week at a sporting event... there would be a national outcry”.

Dini Hunt (Trustee of Berkshire Women's Aid)

Want to support BWA? Come to my plant sale on May 27th 10.00am to Midday at The Rookery, Bucklebury RG7 6EF – cake & coffee too!

Daniel and Sandra Nicholls in Lockdown

Our excitement was Grade 8 music theory! Who in their right mind would ever do anything more than Grade 5 (which is a necessity for ABRSM higher practical grades)? Well, with no choir, no singing pupils and the garden weedless (at one point!), we decided to design a course for it.

Having taken Grade 5 music theory about 45 years ago Sandra suffered as the guinea pig not only being expected to work through the Grade 8 material but also to help create a course for others to enjoy! But it works and now it is possible to cover

all the Grade 8 Music Theory in 2 days. We have also done lots of work to help Music GCSE and A level students.

Bees also played a part in our lockdown experience and despite a couple of stings we have a growing force of bees which just might give us some honey this year. Last year one lot decided to swarm (we felt so rejected) and the others didn't finish capping off their honey in time for the cold months. Those of you with bees will know the luxury of just standing watching them work. It is a great way to relax when you need a break from gardening.

Luckily piano teaching via Zoom worked well for a lot of people and so many pupils carried on and we were joined by some as far away as Copenhagen, Dubai and Australia. Some are even going to continue that way (well it is difficult to turn up every week from the antipodes!).

For VE we enjoyed afternoon tea with distanced neighbours by the main road (who would have thought that would be a thing?).



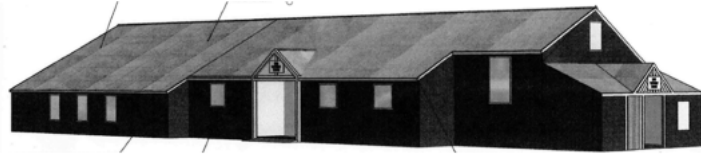
Daniel and Sandra enjoying afternoon tea.

Hot Cross buns turned out well this year, maybe with more time all baking has been better! We love cooking but also love eating out and that is another selfish thing that we have missed. Having survived the last year so easily really there should be no complaints. Missing family and friends is hard but they were all safe and our conclusion is that we are so fortunate and look forward with excitement to the future and hope to see you at the Messiah Concert, St. Mary's Bucklebury 7pm on 5th December!

Daniel and Sandra Nicholls

Halls

Bucklebury Victory Room



The Victory Room remains closed after a brief re-opening when restrictions were relaxed.

We have been using the time to make progress on the refurbishment and extension project. Building regulation approval was obtained in late 2020 and following this approval the trustees asked for tenders to be submitted to complete the works against detailed specification documents. A number of tenders were submitted against different parts of the project and the Trustees made their decision. The chosen tenders were submitted for approval to our main funders and these approvals have now been received. Currently our application to release the conditions attached to the planning approval are with West Berkshire Council and we expect approval of these by late April. If all this goes to plan I am pleased to say that the works are likely to start in either late April or May. The build period for the project is approximately 13 weeks so we hope to be fully re-open in September with a newly refurbished hall.

As with any project, the deliverable has been adjusted to make sure we stay within a budget of the funds raised. We are always happy to receive any new donations to enhance the project and these can be paid directly to the Victory Room, our account details are HSBC A/c no.41574086 sort code: 40-34-12.

Currently we are not making any plans for fundraising events in 2021 but hopefully we might be able to do something later in the year if the Government restrictions allow. We think it is too early to say whether we can hold a Beerfest this year but fingers crossed we might be able to do something.

John Brims
Chair of the Trustees of the Victory Room
0118 9713308 or 07799 348451
jbrims@outlook.com

Exercise

West Berkshire Body Control Pilates



Pilates is a form of exercise that is suitable for everyone bringing together mind and body, allowing clients to work safely and effectively. All exercises are built around 8 principles of:-

- Relaxation
- Alignment
- Co-ordination
- Core stability
- Stamina
- Concentration
- Breathing
- Flowing movements.

Well who can believe we have been teaching our classes online for a year? Our online classes started Thursday 19th March 2020 and neither Michaela nor I would have thought we would still be teaching via Zoom. It was certainly a steep learning curve for us, especially as we are not particularly techy! Zoom does have its benefits in that people haven't had to travel to classes but it has also on occasions been challenging! I think we seem to take it in turns to have internet issues. But it is just amazing that so many people have continued with their weekly classes. Occasionally children have joined in with their parents and one of my most memorable occasions was when a child as young as 6 joined in and concentrated for the duration of the class. We did have a few weeks on and off when we were able to offer face to face classes but these soon came to a halt when we entered Lockdown 2 and 3! Hopefully there is light at the end of the tunnel. It may be possible for us to return to face to face classes late May but I suspect we will also still be offering some classes on Zoom.

Michaela and I have continued to take the opportunity during this year to practise our own technique with renowned instructors. We have both enjoyed attending teachers' courses with Michael King and with Body Control Pilates. Michaela is studying Fletcher Pilates which focuses very much on breath

work and uses a towel as a prop. Mel is booked onto a course in June with Body Control Pilates which will focus on 'Understanding Long Covid- and how Pilates can help'. Michaela attended her Advanced Matwork Course at the Body Control Centre in London and is hoping to complete her Masters Certification.

We have qualifications to teach **Reformer, Pre and Post Natal Pilates** as well as **Pilates for Bone Health (Osteoporosis)**.

Classes are held at **Bucklebury Memorial Hall** in **The Oak Rooms** on Monday and Wednesday Evenings as well as Wednesday and Friday mornings.



Michaela will be hoping to return to teaching at **Peasemore Village Hall** on **Tuesday** and **Thursday** evenings.

Mel is hoping that she will be able to resume her Monday night class at **Hermitage Village Hall** once Covid restrictions are lifted.

Our current plan is to continue teaching some online classes and some classes in halls when possible. We are also hoping to add additional classes. The timetable will be confirmed hopefully at the end of August/ beginning of September.

We are also able to offer one to one sessions.

If interested in attending a class please contact Mel at meriel58@yahoo.com

Yoga

Yoga & mobile therapies: bringing joy & wellbeing to post-lockdown bodies

There is light at the end of the dreary Covid tunnel. From 12th April, close contact services can resume, which means I can get back to treating clients and teaching yoga.

Outdoor yoga: In between lockdowns, I managed to teach a couple of classes in the field behind the Cottage Inn, the Hockett Field and outside the back of the Memorial Hall. I will organise some more outdoor sessions, so please watch this space or get in touch. Once dates are confirmed, I will share these on the Bucklebury Facebook group and email my students. If you want to hear updates please see my contact details below.

Therapies: For those of you who might know me as a yoga teacher, my main 'bread and butter' job is massage therapy & reflexology. I also specialise in Thai yoga massage (aka 'yoga for lazy people!') but tend to combine techniques to suit each client's individual needs. Yoga teaching and bodywork compliment each other wonderfully, bringing together my knowledge of anatomy & physiology, movement and self care.

Biggup the Bucklebury yoga massive: I've taught yoga online throughout the last year and seeing my yoga students on Zoom every week has given me focus, purpose and joy through lockdown. A **MASSIVE THANK YOU** to all of you who have continued to join classes. Your dedication is inspiring and heartwarming.

Bountiful bodily benefits: I've particularly missed seeing people reap the benefits from the 'healing' time in yoga & treatments. I am extremely excited to get back to applying my skills and helping people to unwind, move more freely and connect with their bodies. The benefits of both yoga and regular bodywork are beautifully connected: relaxation, improved circulation, improved joint freedom and mobility, reduced stress, anxiety and pain, better sleep—the list goes on. Authentic, relaxed and lighthearted social interaction is also a much-underrated perk of regular yoga classes and hands-on therapies.

Drop me a line: I have a combination of corporate & private clients but always welcome hearing from new potential clients and students. If you're interested in yoga or mobile therapies, please do drop me a line and I can send you more information. I'd also love to hear from you if you'd like me to teach you and your friends in your garden or at any events you might be planning. Reflexology parties, treatments at hen-dos and pamper days are always lovely ideas to bring you and your friends closer together.

Email me at jfordtherapies@gmail.com

My website is janineford.com

You can also find me on Facebook & Instagram @janine.ford.therapies

Short Mat Bowls

Since this time last year we have had no chance to play any bowls, unless you had a mini set of carpet bowls for Christmas. So for those of you who joined in our meetings last year I am hoping that you will be keen **to restart** the game as soon as we can.

The equipment is as we left it, and The Memorial Hall has been sanitised and is ready for action. For new interested players (and/or beginners) a full set of equipment for two lanes of indoor bowls is already waiting for you to join the fun.

There will be one or two new procedures introduced to keep within the government Covid recommendations re social distancing and sanitising the equipment. Initially we will probably not include any coffee, tea and biscuits but individuals can obviously bring their own supplies for their own consumption.

For the immediate future I would be keen to know how many folk will be interested.

Our Last weekly programme was for two sessions per week (see below).

MONDAY mornings between 10.30 a.m. and 12.30 p.m.

FRIDAY afternoons between 1.30 pm. and 3.30 p.m.

It is run as a Pay & Play activity and is open to all.

The charge per session (2 hours) will be £3 per person.

Target start END of June?

THE SESSIONS will be RELAXED, and FUN.

ALL ARE WELCOME as regulars or occasional visitors.

LET ME KNOW of your interest, any suggestions, and if you are able to offer helping the general running of the sessions. HELP is NEEDED!

I look forward to hearing from you.

Mike James: m-a-james@tiscali.co.uk 0118 971 2285



Sport

Bucklebury Badminton Club

Despite the difficulties of social distancing, the badminton club ran successfully all through the summer after the first lockdown and into the autumn too. We were restricted on how we could play; strictly six per court and many members chose to play singles although doubles was permitted. Of course, we haven't been able to play since late December but we are ready to start again as soon as we are allowed. At the time of writing, we think that will be after 17 May.

In the meantime we have had regular "Lockdown Newsletters" expertly published by one of our members. These contained news from all our members which was very varied and included a wedding, an engagement and a pregnancy as well as interesting stories about how everyone was passing the time. We have also had a very welcome online live quiz every Tuesday evening with questions posed by another willing club member.

During the summer, club nights should run on Tuesdays and Wednesdays and we will still be welcoming visitors despite any Covid restrictions but while these are in place, it is necessary to book before you turn up please. Our website is regularly updated with details of when we are playing and how to book a visitor's slot or join us.

VENUE: Elstree School, Woolhampton, RG7 5TD

DAY: every Tuesday and Wednesday 8 to 10 p.m. (until September after which Tuesday only)

COST: £5 for visitors (deducted from subscription which is £120 per annum **pro rata**. £55 for students)

CONTACT: Margaret Neville 01635 873811
margaretnev@yahoo.co.uk

WEBSITE: buckleburybadmintonclub.com

Bucklebury Tennis Club

In spite of the many lockdowns, restrictions and easings over the last year, Bucklebury Tennis Club has flourished with outdoor tennis as an acceptable outdoor activity. Following the Government Roadmap the tennis courts were opened once again on 29 March for recreational play for singles, doubles, coaching and drills.

Drills:

The very popular evening drill sessions with coach Damian Lane will continue on a Monday and Thursday.

For further details contact: Karen Pegg: kppegg61@gmail.com

Junior Coaching:

Our Junior Coaching with Damian Lane has resumed.

For further details of our summer programme contact: kppegg61@gmail.com

Club Membership:

New members and pay and play visitors are most welcome. There are always plenty of opportunities to play. Courts must be pre-booked through our website:

www.buckleburytennis.com

Our Membership Secretary, Norman Casson (normancasson@aol.com) can help with any queries.

As the easing of restrictions hopefully continues we look forward to League tennis. We have teams entered in the Berkshire Leagues and the Newbury and District Leagues. Social events will be planned when possible.

Full details about the club and the Committee are on our website. **www.buckleburytennis.com**

Robin London (robinlondon145@gmail.com)

Bucklebury Tennis Club

FC Cougars

FC Cougars are looking forward to getting back in action, when we are allowed to return to playing football from 29 March 2021. It has been difficult for all our players to have to stay indoors and we know they will all be very keen to get back out on the pitch with their teammates.

All our youth teams will be back to training mid-week and playing friendly fixtures on Sundays provided by the Reading and West Berkshire League. It has been a quiet winter and spring for us due to the pandemic but we have used the time to tie up a sponsorship with McDonalds who will be supporting the club with purchase of playing and training kit, and helping our coaches gain FA qualifications through matched funding.

Our older age groups are looking forward to returning to Bucklebury Recreation Ground for their training on Thursday evenings where they will be making the most of the lighter evenings – and hopefully some good weather suitable for football! Meanwhile our younger age groups will be continuing with their matches at Bucklebury Primary School on Sunday



FC Cougars—ready for action.

mornings. We would like to thank Bucklebury Parish Council and Bucklebury Primary School for helping keep children in the community active!

FC Cougars are a fun and friendly youth football club based in West Berkshire. We have players from Bucklebury, Cold Ash, Thatcham and the surrounding areas. We welcome boys and girls of all abilities who are keen to play regular football. If your child is in Year 1 to Year 8 then they are eligible to play in one of our teams – if you have a keen footballer in your family then please get in touch! For more details on the club please see www.fccougars.com

Graham Loader—FC Cougars

Contributions

Material to appear in The Oaks should be sent neatly typed for scanning or as a word-processor document (e.g. MS Word), attached to an e-mail and sent to “clerk@buckleburyparish.org”. Don’t worry about layout as it will be re-formatted to the house-style. Please supply any pictures or artwork as separate files, as they are not usually recoverable from word processor files and don’t forget to include captions for the pictures.

All contributions appertaining to the Parish are very welcome but the Parish Council reserves the right to adapt or omit submissions.

The deadline for submissions is the 20th of the month preceeding publication.

Barry Dickens

Published in February, May and October

By Bucklebury Parish Council.

Helen Pratt, Clerk,

Jasmine Cottage, Byles Green, Upper Bucklebury,

Reading. RG7 6SD. Telephone: 01635 863581

E-mail: clerk@buckleburyparish.org

Copyright © Bucklebury Parish Council, 2019

(Printed by The Alpha Xperience, Newbury

Telephone 01635 523240)

Distributed free to all households in Bucklebury Parish,
and on the web:

<http://buckleburyparish.org/publications/the-oaks>

Parish Diary Dates

April

12th	Bucklebury Parish Council	7.45pm	Zoom: Meeting ID: 826 7023 4688 Passcode: 702257
------	---------------------------	--------	--

26th	Bucklebury Planning Committee	7.45pm	Zoom: Meeting ID: 863 0651 1793 Passcode: 607875
------	-------------------------------	--------	--

May

6th	Bucklebury Annual Parish Council	6.30pm	Zoom: Meeting ID: 836 7318 0157 Passcode: 178349
-----	----------------------------------	--------	--

6th	Bucklebury Annual Parish Assembly	7.45pm	Zoom: Meeting ID: 895 1530 0348 Passcode: 747454
-----	-----------------------------------	--------	--

24th	Bucklebury Planning Committee	7.45pm	All Saints Church Hall (tbc)
------	-------------------------------	--------	------------------------------

June

3rd	Bucklebury Walkers	10.00am/10.30am	The Cottage Inn.
14th	Bucklebury Parish Council	7.45pm	All Saints Church Hall (tbc)
28th	Bucklebury Planning Committee	7.45pm	tba

July

2nd	Bucklebury Walkers	10.00am/10.30am	The Cottage Inn.
12th	Bucklebury Parish Council	7.45pm	tba
26th	Bucklebury Planning Committee	7.45pm	tba

August

5th	Bucklebury Walkers	10.00am/10.30am	The Cottage Inn.
9th	Bucklebury Parish Council	7.45pm	tba
23rd	Bucklebury Planning Committee	7.45pm	tba

September

2nd	Bucklebury Walkers	10.00am/10.30am	The Cottage Inn.
13th	Bucklebury Parish Council	7.45pm	tba
27th	Bucklebury Planning Committee	7.45pm	tba