

The Oaks



Inside this issue:

Bucklebury Parish Council

WB Councillors	5
News and Events	6
Family	8
Organisations	9
Halls	12
Sport	12
Country Life	13
Contributions	15

Bucklebury Parish Chairman's Letter

Bucklebury Parish Council would like to thank all the parishioners who helped with Common Clearing again this March. Since rubbish is such blight in any area, it is very satisfying to see the amount collected in one afternoon. Although originally rubbish was collected only from the common, it is now collected from many parts of the parish, the recreation ground, along the River Pang between the fords and along road sides, to name but a few places, so the whole parish benefits. The chance to catch up with people over tea and cake is always enjoyable and new people are welcomed with open arms. The next Common Clearing is on 15th October.

The Annual Assembly will be held on Friday 20th May at 8pm. Alex Cruickshank of the Berkshire, Buckinghamshire and Oxfordshire Wildlife Trust will be talking about the interesting and important work BBOWT does in the area and their involvement on Bucklebury Common. Come and find out what has been going on in the parish in the last year and enjoy a glass of wine.

We would like to thank the Bucklebury Events Committee for organising a celebration for the Queen's 90th birthday for parishioners at Bucklebury Farm Park on Friday 10th June and Rupert and Elizabeth Hartley Russell for generously allowing the Farm Park to be used.

There has been much progress recently on the legal work concerning the meadows behind the Cottage Inn in Upper Bucklebury. The transfer of the land to the parish should, at long last, happen shortly. Fingers crossed.

4x4s and motor cycles are again doing a lot of damage to areas of the parish. The police have been out several times with some success. Unfortunately some of the activity is at night making it very difficult to see

number plates and take photographs. If you do have the opportunity to do so, please send any evidence to the police. Repairing the damage is hugely expensive and with budget cuts the money will increasingly be difficult to find.

We would like to thank Steve Manson for the work he is doing to try to organise a mini bus to take pupils to Kennet School and we wish his endeavours every success.

Councillors already have many responsibilities and it seems that with the reduction of the government grant to WBC we will be asked to take on more which may have financial implications. Time will tell.

We wish you a sunny, warm summer,

Wynne Frankum
Chair BPC

Bucklebury Annual Parish Assembly

8pm Friday 20th May 2016
Memorial Hall
Upper Bucklebury

Alex Cruickshank
Senior Land Manager at
BBOWT

(Berkshire, Buckinghamshire and Oxfordshire Wildlife Trust)

**The History of the Commons
and how they are managed by
BBOWT**

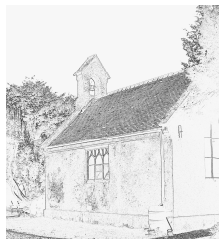
Refreshments will be available after the meeting

Parish Council Chairman
Wynne Frankum

Parish Council Clerk
Helen Pratt

The Oaks Editorial Team
Editor: Wynne Frankum
Copy secretary: Lindy Clarke
Typography: Helen Pratt
Proofing: Christine Ewing

Bucklebury Cemetery



The wonderfully named “Burial Board” has revised the rules, regulations and charges. The clerk has copies. They are also on the notice board of the chapel and web site. They are in line with similar cemeteries in the neighbourhood.

The plan of the cemetery is also held by the clerk.

Wynne Frankum Chair Burial Board.

Parish Council Matters Arising

Community Assets

HELP US WITH INFORMATION ABOUT PEACHES STORES AND THE COTTAGE INN.

The Community right to bid gives communities a better chance to save a local asset of significance such as a local pub or shop or library if it should come under threat. A community or parish can nominate buildings or land as an asset of community value and stop the clock on a sale of listed assets for up to 6 months.. This gives us the opportunity to raise finance for a bid before an outside sale takes place.

As you know, when there were concerns about the future of Bladebone Inn last year, the Parish Council decided to put it forward for inclusion on West Berks Council's list of community assets and it was duly accepted for registration. Fortunately the Bladebone now appears to be thriving under new management but the listing will remain as a protection for the future.

We are now in the process of nominating **Peaches** stores for listing as a community asset and are waiting to hear the outcome. We have been asked for additional information to show what community support there is for the store, why and when parishioners use it, what for and whether they consider it to be a community asset. It would be really helpful if you could email Hilary Cairns (hilarycairns@aol.com) with this information so that we can push forward with our application.

Our next (and hopefully last) nomination will be the **Cottage Inn**. Again we will need to show that there is considerable local support for this possible listing, so it would be really helpful if you could email either Hilary or myself with your reasons as to why you consider the Cottage Inn to be a social asset to the community.

Lindy Clarke & Hilary Cairns Parish Councillors.
lindy.clarke@live.co.uk
hilarycairns@aol.com

Defibrillators

On Saturday 12th March, the defibrillator at Peach's Stores in Upper Bucklebury, which had been installed in January, had its official launch, in memory of parishioner Chris Baxter who was taken from us much too early, last year. Dr Nick Young, Heartstart Thatcham's scheme co-ordinator thanked Hash and Chan Shingadia for their enormous support in this venture and for allowing the defibrillator to be placed on the side of the shop, and thanked Dorothy Dugdale whose vision it was to place public access defibrillators in our parish.

Please have a look at where the defibrillator is situated so that, should you need to access it in an emergency, you know where to go. The drill in an emergency, when a sudden cardiac arrest is suspected, is, phone 999, give the postcode of the patient's location, get the defibrillator's access code from the call handler and while one person stays with the patient performing CPR (the call handler will talk you through this) another gets the defibrillator, using the code.

The call handler and the machine give all the instructions so you can't get it wrong. You could, however, save a life. Although training is not necessary, courses will be held during the year. Please contact Dorothy Dugdale on 01635 864 126 or jdugdale@talktalk.net if you are interested.

By the time you read this, our next defibrillator should be installed outside The Victory Room in Bucklebury Village, and a third, at the Bladebone, is in the pipeline.

We would be grateful for any donations towards the cost and upkeep of these, and we benefit by an extra 20% if you can complete a gift aid form and return it along with your donation to Dorothy Dugdale or any Parish Councillor.

Anne Hillerton - Parish Councillor

Parish Website

BPC maintains a Bucklebury Website which contains a diary of things going on in the parish, minutes of all BPC meetings, a list of amenities and services and much more. If you run a business within the parish and wish to have details listed on the site, please contact the Clerk.

The Website can be found at www.buckleburyparish.org.

Welcome Pack

If you are a newcomer to the Parish, and you have not yet received a Welcome Pack, please contact the Clerk, Helen Pratt, for a copy (her details are on the page 15).

Planning

As well as considering planning applications, councillors have raised concern over several alterations which have been made without planning permission. The Enforcement Team at WBC has led us to understand that some of these alterations do require planning permission. If you are unsure whether alterations/extensions you are planning require permission, please have a look at the WBC Planning portal and if necessary consult the WBC Planning Team (contactable via 01635 42400).

Reference	Description	BPC Status	WBC Status
15/00296/OUTMAJ	<u>Land at Siege Cross Farm, Bath Road (Adjacent Parish).</u> Outline application for the phased development of up to 495 dwellings; up to 250sqm of Use Class D1 floor space; a new primary school of up to 2 forms of entry; vehicular, pedestrian and cycle accesses; public open space; children's play areas; landscaping; structural planting; new woodland planting; sustainable urban drainage measures including water detention basins; associated ground modelling; and all associated works. Means of vehicular access into the site proposed in full. Matters to be considered: Access – Into the Site	Object	Refused by WBC. Taken to Appeal
15/02274/FUL	<u>Greenwood, Hatch Lane.</u> Section 73: Removal/Variation of Condition 2 – approved plans of approved application 13/02860/FUL. Proposed replacement dwelling with detached garage – revised proposals.	Object	Refused on Appeal
15/02313/FUL	<u>Brockhurst School Playing Field.</u> Provision of new all-weather playing area with associated low level net enclosure, new emergency vehicle access with associated parking.	No Objection	Approved
15/02076/COMIND	<u>Mazlands Farm, Burnt Hill Road, Stanford Dingley (Adj Parish).</u> Construction of a solar energy park to include the installation of solar panels, security fencing, transformer housing, access and other associated works.	Object	Refused
15/02340/FULD	<u>Fifield Farm.</u> Demolition of existing out-buildings and barn and replacement by proposed erection of a dwelling.	Object	Allowed on appeal
15/02939/FULD	<u>Fifield Farm, Marlston.</u> Conversion of barn into single dwelling house and demolition of existing redundant ancillary buildings.	Object	Refused
15/03328/HOUSE & 15/03329/LBC2	<u>Pear Tree Cottage, Byles Green.</u> Single storey extension with open deck in the roof space.	No Objection	Approved
15/03350/HOUSE	<u>Marywell, Chapel Row.</u> Comprehensive renovations including part single, part two-storey extensions, alterations to existing roofs and fenestration, internal alterations and associated works.	No Objection	Approved
15/03382/HOUSE	<u>37 Mortons Lane.</u> Conversion of existing loft space to additional habitable accommodation.	No Objection	Approved
15/03418/HOUSE	<u>16 Berry's Road.</u> First floor extension.	No Objection	Approved

15/03432/HOUSE	<u>Denbar, Turners Green.</u> Erect detached garage/store to front of house	No	Approved
15/03356/MINMAJ	<u>Hartshill Copse, Burdens Heath (Adjacent Parish).</u> Section 73. Variation of condition 2 (time period of operations) of the appeal decision APP/U0300/A/88/93423 into planning application 125420 – Extraction of hoggin from Land adjoining Harts Hill Road, to enable a satisfactory restoration scheme to be agreed, implemented and completed.	No Objection	Approved
16/00071/HOUSE	<u>26 Chapel Row.</u> Construct new single and 2 storey rear extension. New first floor window to side elevation.	No Objection	Approved
16/00076/HOUSE	<u>Paxton House, Sadgrove Land.</u> Alterations and extensions to dwelling including conversion of garage to habitable accommodation. Re-submission of application reference 15/02838/HOUSE.	No Objection	Approved
16/00092/FUL	<u>Stable View, Briff Lane.</u> Retrospective permission for the enlargement and surfacing of an all weather ménage .	No Objection	Approved
16/00123/FULD	<u>Manor View, Hopgoods Green.</u> Use of first floor annex as a separate dwelling.	Object	Refused
16/00336/FUL	<u>Greenwood, Hatch Lane.</u> Section 73: Variation of conditions 2: Approved plans, 3: Materials, of permission 15/02274/FUL: Section 73: Variation of Condition 2 (approved plans) and Condition 7 (Ecological mitigation scheme) of approved application 13/02860/FUL.	No Objection	Approved
16/00150/HOUSE	<u>Copperstones, Little Lane.</u> Single and two storey rear extension.	No	Approved
16/00359/HOUSE	<u>Dalnuston, Carbinswood Lane.</u> Single storey front extension.	No	Approved
16/00172/FULD	<u>Kings Copse Bungalow, Southend.</u> Replacement bungalow.	No	Approved
16/00432/FULD	<u>Acrs Farm, Hungerford Lane (Adjacent Parish).</u> Conversion of workshop element of barn (54 sq.m) to residential use and creation of new office. Extension of storage/packing and dispatch building to provide relocated workshop with display/demonstration suite above.	No Objection	Awaiting decision
15/03261/LBC2	<u>Cherry Orchard Cottage, Hatch Lane.</u> Carefully strip and set aside plain tile roof covering, remove battens and dispose, inspect roof structure for timber decay and undertake rafter repair/replacement as agreed in similar material. Fit breather underlay and new pre treated tile battens. Reinstate roof covering set aside with matching reclaimed tiles as necessary to replace any breakages.	No Objection	Approved
16/00523/FULD	<u>Marywell, Chapel Row.</u> Demolition of existing house and construction of a replacement dwelling and associated works	No Objection	Approved
16/00638/HOUSE	<u>27 Broad Lane.</u> Demolition of existing single storey side extension and erection of new two storey side extension, front façade renovation and replacement of existing conservatory single storey lean-to extension.	No Objection	Awaiting decision
16/00605/HOUSE	<u>39 Roundfield.</u> Proposed two storey rear extension creating larger ground floor living space and 2 new bedrooms and bathrooms at first floor level. New front access and parking. Remove brick built garden store and reposition oil tank.	No Objection	Awaiting decision

West Berks District Councillors

Bucklebury Ward contains the parishes of Bradfield, Bucklebury, Frilsham, Hermitage and Stanford Dingley. Our councillors are:

Graham Pask Tel/Fax: 01635 864023

Email: graham.pask@westberks.gov.uk

Quentin Webb Tel/Fax: 01635 202646

Email: quentin.webb@westberks.gov.uk

WBC Councillors' Report

Following the worst government settlement in West Berkshire's history we have been lobbying our MPs to support a fairer method of supporting our local services. We understand that the way in which local government is financed is changing with a move away from "grant" funding, but this really has to be replaced by an ability to retain more of the business rates we raise. Currently we raise about £83million in business rates which is passed to central government and we receive £17million back to support our budget. We have suggested that West Berkshire should be one of the authorities which trials the government's new regulations of financial support and will keep you informed of the outcome following a sympathetic response to the idea.

We have just learnt that we have been successful in bidding for a share of the recently announced government Pothole Action Fund having been awarded £217,000 as a grant, this will enable us to repair over 4,000 potholes! We are spending £4million this year on our highways so please report any damaged roads on the West Berks website or by phone to the call centre (01635 42400) to ensure we get our share here. You may find that holes are still filled with a temporary repair, which I appreciate is contentious, but roads must be made safe as quickly as possible. The new grant will mean that a proper programme of patching will ensure a permanent solution will be carried out as soon as possible.

Earlier this month we took our Chief Executive (Nick Carter) on a tour of the parish to show him some of the local issues, including which of the local roads and footpaths were in need of attention. This was a very worthwhile visit and we know he has reported his findings to the highways department.

One other good news story, following the inadequate rating of

our Children's Services by Ofsted last year we have just been told that the hard work to make improvements to safeguard vulnerable children is being recognised by the Department for Education, who have said that good progress is being made. It is essential that we improve the service so we can retain control locally.

As always please contact us on any West Berkshire issue or concern.

Graham Pask & Quentin Webb

West Berkshire Council launches new energy switching scheme

The 'free to join' Big Community Switch scheme will negotiate competitive prices with energy companies on behalf of local residents. Residents will be able to register their interest in the scheme before a competitive process to find the best deal for the group. Those who have registered their interest will then be given a personalised offer showing how much could be saved by switching. There is no obligation to switch.

If you want to take part or find out more visit www.westberks.gov.uk/communityswitch

You will need to have your latest energy bill to hand as you'll need the details during the registration process. Registration is open until midnight on Monday 16th May.

West Berkshire Volunteer Village Agents



Spring is here, do you know someone who would like to get out more? Or is not accessing all the services they need?

Many of us can be very independent and then almost overnight, need a little help; but do not know what help is available. Village Agents can put residents in touch with the services that allow them to enjoy the community they live in and to be able to stay in their own homes for longer.

Contact Carolyn in Bucklebury- 07547206030
or Jo in Beenham - 07955768612
Alternatively contact our coordinator Gill on 01635 49004 or 07775366812 www.villageagentswb.org.uk

Thames Valley Police Neighbourhood Team

If you have any issues and you would like to talk to a neighbourhood officer, please don't hesitate to contact us on 101 or at the following email addresses:

sarah.preston@thamesvalley.pnn.police.uk
kirsten.goodfield@thamesvalley.pnn.police.uk
alan.hawckett@thamesvalley.pnn.police.uk

PCSO Sarah Preston C9881

4x4 and Scrambler Bike abuse of the Common

If you become aware that 4x4s or scramble bikes are using the Common off the byways, please report it, whilst it is happening to the Police on 101, identifying the location as best you can. Please make sure you get the URN (Unique Reference Number) from the Police and ideally forward the information to the Clerk at buckleburyparishclerk@yahoo.co.uk or on 01635 863581.

Neighbourhood Watch

The following Neighbourhood Watch groups exist within the parish.

Burden's Heath	<i>Rob Tayton</i>	<i>01635 865495</i>
Turner's Green	<i>Neil Rendall</i>	<i>01635 865899</i>
Blacklands Rd, Berry's Road and Woodside Close	<i>Mrs S Dorling</i>	<i>01635 864256</i>
Bucklebury Village	<i>David Barnes</i>	<i>0118 971 2647</i> <i>dbarnes@macace.net</i>
Hatch Close	<i>Vacant</i>	
Hatch Lane(central)	<i>Debbie Potter</i>	<i>07747 021992</i>
The Avenue (east end, south side)	<i>Mrs J Bywater</i>	<i>0118 974 4124</i>
The Avenue (east end, north side)	<i>John Travis</i>	<i>0118 974 4616</i>
The Slade	<i>Hilary Cairns</i>	<i>01635 866021</i>
Briff Lane	<i>Philip Teal</i>	<i>01635 866587</i>
Broad Lane (track)	<i>Ian Westbury</i>	<i>01635 864230</i>
Broad Lane (west)	<i>Richard Sadler</i>	<i>01635 865846</i>
Broad Lane (east)	<i>Becky Hannam</i>	<i>01635 863313</i>
Morton's Lane	<i>Geraldine Tovey</i>	<i>01635 866757</i>
Byles Green	<i>Jeremy Brooke</i>	<i>01635 863035</i>

If you live in an area covered and wish to join, please contact the co-ordinator. Alternatively, if you live in an area not covered and are interested in being a neighbourhood watch co-ordinator, please contact the Clerk for more information.

News and Events

Bucklebury Beerfest

Saturday 8th October 2016
Midday to 6pm

The Bucklebury Beerfest will be held on Saturday 8th October 2016 from midday to 6pm at the Bucklebury Village Recreation Ground.

A fun day out for all the family, the Bucklebury Beerfest boasts a great selection of regional beers and ciders, as well as fabulous local food cooked on the BBQ. Visitors can enjoy a wide variety of trade stalls, a farmers market, a traditional tea tent, and plenty of children's entertainment, all accompanied by live music.

Once again, this year's Beerfest will also include the Bucklebury Fun Dog Show, so don't forget to bring along your canine companion(s) to win some fantastic prizes.

Now in its eighth year, the proceeds from this year's event will go towards the development of the new Victory Room. For more information, including updates on exhibiting trade stands and live bands, please see the Bucklebury Beerfest website – www.bucklebury.beer

We are always looking for volunteers to help during the Bucklebury Beerfest weekend. If you have a few hours to spare on Friday 7th, Saturday 8th or Sunday 9th October, please contact Lucy Unamba at buckleburyvictoryroom@gmail.com.

Kennet School Bus

Due to the financial cuts being made by West Berkshire our community has lost the school bus for children attending Kennet School in Thatcham, also we are at risk of losing the 101 public bus as it is a subsidised service and the council are no longer able to continue doing so. With that in mind a group of parents are investigating the costs of purchasing a minibus to replace the lost school service and take children to a suitable drop off point near the Kennet School. This would have to be funded by parental contributions, but the costs would be significantly lower than the £684 quoted by the existing service provider. After the school runs this bus would be made available to the community to use. It is well known that Bucklebury Primary School would like to use the bus, but there are other groups in the village who could also take advantage of having this available. My email address is mans048@hotmail.com if you would either like to get involved or could offer support in any way from being a driver to helping out at fund raising events.

Stephen Manson

Chapel Row Fayre

Saturday 27th August 1.00pm. - 6.00pm

This year The Chapel Row Charity Fayre will be spectacular; as it is our 20th Year we have pulled out all the stops. We have our famous sheep racing, fabulous Victorian Fair with carousels and swing boats, children's corner with bouncy castles and farm animals, various craft stalls, dog show and a big selection of classic cars, Graham's Hog Roast, tea tent with homemade cakes and sandwiches, not forgetting the beer tent with real ale plus much much more.

The Chapel Row Charity Fayre has always been such a fun event to be at with so much to see and do and for the first time ever we will be running a children's fancy dress competition courtesy of Kiddisworld Thatcham, who will be judging and presenting the Prizes.

Our raffle prizes are rather special, with two tickets for Tony Hadley's concert at the Albert Hall, two tickets for ABC in concert at the Festival Hall, a days Golf for 4 people at the

Donnington Valley Golf Club, a meal for two at the Beetle and Wedge, dinner for two at the Six Bells Beenham, a photo shoot and as we speak many more raffle prizes are pouring in.

Our Charities this year are Alexander Devine Children's Hospice, Newbury Macmillan's, West Berkshire Mencap and M.N.D.A. (Motor Neurone)

If you would like to support us by donating however much or little to make this event special we would be truly grateful. Many thanks.

Sue Glover

For all enquiries please call:

The Secretary Lynette Maja on 01635 874888.

Celebrate the Queen's 90th

For details of how to obtain tickets for the event on Friday 10th June, please see the enclosed flyer or the parish council web site:

<http://www.buckleburyparish.org/what-s-on/events>



For Parishioners
& Friends

Bucklebury Celebrates the Queen's 90th



Bucklebury Farm Park

Friday, 10th June '16
(6pm – 9pm)

Call: 01635 863372

**Email: buckleburyevents
@gmail.com**

**Closing date for tickets –
Saturday, 4th June '16**

Advanced Tickets

£5 include:

- ✓ Live Music
- ✓ Hog Roast or Pizza
- ✓ Birthday Cake & Bubbly!

(12 yrs & under Free)

Bucklebury Community Events

Quarter Peal for Bucklebury Couple Celebrating Diamond Wedding

The bells rang out on Saturday 9th April 2016 at St Mary's Church, Bucklebury to celebrate the Diamond Wedding Anniversary of local parishioners, Gill and Jeremy Brooke. Living in the village for over 50 years, they are regular members of the church congregation and have supported the community in many ways. Jeremy was Church Warden for a number of years, Chair of the Parish Council and instrumental to the refurbishment and extension of the Memorial Hall. Gill was closely involved with the village primary school and served on the Board of Governors. The band who rang the quarter peal, travelled down from Derbyshire and included the couple's second son, Richard and Sophie his daughter, one of Gill and Jeremy's granddaughters. This was followed by a celebratory meal the following day at The Old Mill, Aldermaston for family and friends.



L to R: Christian Peckham, Rachael Peckham, Cam Peckham, Sophie Brooke, Liz Arnold, Gill Brooke, Jeremy Brooke, Simon Melen, Catherine Brooke, Richard Brooke. (Photo taken by Jenny Peckham)



Family

1st Bucklebury Guides

Our thriving, energetic unit has had another very busy year! We have welcomed a steady stream of new members as well as preparing some of our older Guides for moving on to Rangers. To reinforce the idea of supporting different communities we have undertaken a variety of fund-raising activities; The Rotary Club sponsored walk, Bucklebury Beerfest, a bingo night and fashion show, raising some money for the unit and for an organisation called Toilet Twinning who provide clean sanitation in poverty stricken areas around the world.

During the summer term we enjoyed swimming, a treasure hunt around Newbury organised by some of the older Guides, an outdoor games night and practising putting up tents ready for camp. The girls worked for their Outdoor Cook Badge planning meals and cooking them on barbecues, camping gas cookers and an open fire at Thirtover. We all especially enjoyed the tasting part! The World Culture badge was attained by reading and acting out stories from a variety of cultures and then enjoying the traditions of Burns night and Chinese New Year as well as discussing the international links and history of the Girl Guide movement.

As the weather turned cooler over the autumn we spent more time indoors and patrol time was used for the girls to pursue their own interests with various Go For It badges being completed including those centred around food, health and beauty, acting and party planning.

On a more serious note the girls wanted to be better informed about the dangers of drugs and we invited PC Tim Emery to talk to them. He shared lots of information, gave advice and brought examples for us to look at; it was a great opportunity for the girls to ask lots of questions.

In the next few weeks we are looking forward to celebrating the Queens 90th Birthday (more cake!) and tackling the agility badge and science badge as well as swimming, completing a trail around Newbury and some painting outdoors...weather permitting!

If you are interested in joining us, please do get in touch. We always welcome local girls onto our waiting list, and are really interested in ladies who would like to join us in running the unit. Bucklebury is a very popular busy unit. Adult helpers may not get paid, but we certainly do have a lot of fun.

Amy Coombs

amy@pettituk.com

1st Bucklebury Brownies



During the spring term we had a trip to Newbury Fire Station to help towards our Fire Safety Badge, enjoyed a film night and finished the term with an Easter Egg trail!

We have lots of exciting activities planned for the Summer Term including a sleepover, visit to Bucklebury Farm Park and a canoeing session.

We will be looking for a new Unit Leader from the end of the Summer Term which could be a shared position. If you are interested in volunteering for this incredibly worthwhile and rewarding role, please contact Michelle Harrison on 1stbuckleburybrownies@gmail.com for further information.

West Berkshire Ballet School

Our first Easter Ballet course was a great success! 24 lovely dancers from Grades 1, 2, 3 and 5, spent four happy days improving their technique, strengthening their bodies and choreographing a brand new ballet based on springtime. Holly & Jane have already had requests for next year – we shall be delighted!



WBBS Easter Course

The modern and tap department are very busy putting the finishing touches to their production of 'Shrek The Musical' which will be performed at the Memorial Hall on 11th, 12th and 13th July @ 7pm. Tickets, @ £8, are now available from clbowden@me.com. This show will be very popular with children from 5 years upwards. Wait until you see Claire's amazing costumes – we are so fortunate to have a sewing creative genius on our team, together with Claire's mum – a formidable pair!

Before the end of the summer term we shall have several ballet students auditioning in London for coveted places as Cecchetti Scholars and Associates. We have been lucky over the past 14 years always to have one, (and occasionally two) Scholars who

have been selected to receive free weekly tuition from the very best teachers. The competition is tough with two hundred dancers competing for no more than 40 places. Our Associates have really enjoyed their year – making new, likeminded, friends and meeting new dancing challenges. Last year's successful students will audition again in June.

June looks like being a very busy month for WBBS. First the Primaries will have their first exam experience and the following weekend we shall have two days of ballet exams with a record eight dancers taking their Intermediate exam. This exam is intended for those wishing to spend a career in dance, continuing with vocational training or beginning their teaching qualifications. The Grade 1s, 2s and 3s will also enter and, of course, we all wish them lots of luck – don't forget your WBBS smiles please.

Jane Scholl, Claire Bowden, Holly Unnuk, Lucie Dale & Jenny Bennett.
wbbs.org and [facebook](https://www.facebook.com/wbbs.org).

Organisations

Mah-jong

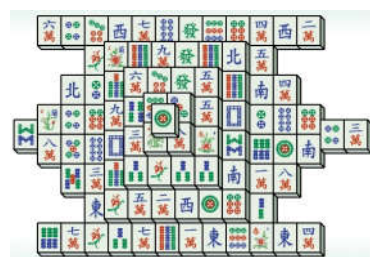
We meet on the first and third Mondays of each month (not Bank Holidays) for a couple of hours of fun and relaxation. We are a mixed group and welcome beginners. At the moment we don't score at the end of each game but do have a member who is proficient in this should you wish to learn.

We usually have 12 – 15 playing each time and chat over a cup of tea and a biscuit (or two) as well. Cost is £1.50 per person.

We play using the rules written by Max Robertson, whose book "The Game of Mah-Jong" has been accepted as the foremost authoritative guide to the rules and scoring of this fascinating game. It is a Penguin book, ISBN 978-0-14-300659-6, and would be available through bookshops or on line. The U3A in Thatcham also follow these rules so it would be easy for anyone to join their group. I also have photocopied sheets showing the basic hands from this book available to members.

Do come along and enjoy a fun afternoon with lots of laughs.

Helen Relf, grannyrelf@btinternet.com 01635 867619



Bucklebury & Marlston Horticultural Society

Spring 2016

So far a cold, wet and occasionally wild March has followed a damp January and a decent February down in the South, whilst the North and Scotland are still recovering from serious flooding. What will April hold? The soil is moist, and once the ground temperature increases I expect our plants to make up lost time, too late for our Spring Show. Cold winds have held back a wonderful spring display in our gardens, and entries were lower than normal at our Show. The quality of entries was good, but the quantity continues to disappoint. Please make a diary note for next year to have a good look around the garden for likely prize winners, and bring them along to the Memorial Hall. (Details will be in the schedule) Previously we have squeezed into the Oaks Room for an audio visual presentation from Malcolm Brownsword in January, and a gardening quiz in February. We regained use of the main hall in March for a well-attended presentation of spectacular photographs of local wildlife by Tom Way. His picture of a Puffin on landing approach is internationally famous. The success of these evenings highlights the dedication of our very small committee, who always rally around and put up a good show. We cannot keep the club going with so little in reserve. About 40 years ago we had an injection of young volunteers who gave new energy and direction; we desperately need another dose as the maths is steadily working against us.

May is a busy month. There is an open evening at Cottismore Garden Centre, off the A339 north of Kingsclere just before The Star PH and the Shell garage, on Thursday 12th May, starting at 7pm. There will be a guided tour plus a chance to buy some bedding plants at very competitive prices. Please come along for some bargains and possible class winners at our Shows! Just before that, on Saturday 7th May we have our annual coach outing, this year we are going to the Malvern Spring Show, which has been a popular destination in the past. (Departing Peaches/All Saint's Church, Upper Bucklebury at 9.00am.). In July (Saturday 23rd), the week after our Summer Show, we have arranged a group entry to the RHS gardens at Wisley. This is a wonderful opportunity to explore the best garden in the world at your leisure; we will travel independently by car, so you can bring a couple of friends too. It is FREE, but do not go directly to Wisley. Assemble behind All Saints Church at 9.00am for a final briefing, but once at in the gardens, you can wander as you please and leave as you wish.

Our Summer Show will be on 16th July, so get out in the garden and get weeding out and feeding.

The Memorial Hall has been booked for our autumn social, which will be Saturday 26th November. The theme will be "Monte-Carlo or Bust". A chance for some friendly gambling (no money will change hands!), win prizes and enjoy French Cuisine. More details and tickets will be available at our Shows. All of our activities and Show information are included in our 2016 red schedule; please note that all our show classes are

OPEN TO ALL! New members are always welcomed by John Wright (01635 863429) and your first year is free.

Happy gardening.

Derek Matthews (0118 9712587)

Bucklebury History Society

The group primarily exists to promote, research and document the history of Bucklebury from as early as possible to the 21st century and share findings with all those who are interested. We have oral recordings of memories from parishioners and a collection of old photographs in our archives, both in hard copy and digitally. The Bucklebury History Database, which assists in our knowledge of the people who lived in Bucklebury from when records began, is expanding.

The current index count stands at over 16,000 records. We have just added the baptisms of Bucklebury people from the Independent Chapel in Thatcham, mainly in the 1830s.

Anyone wishing to look up anything on the Bucklebury History Database or who have any Bucklebury data which can be added should contact the group. Any help with research is very welcome.

We have had the following queries over the last couple of months – please get in touch if you can help in any way:

1. The **Shepherd family from Stanford Dingley**, mainly in the 1800s. They lived at Dodd's Farm.
2. I am currently researching the work of the Arts and Crafts architect **Mackay Hugh Baillie Scott**. In the main book about his work, there is a reference to him designing a house at Bucklebury Common in 1919-20. I have established that this is **Bucklebury Grange / The Grange**. I have also located 3 publications issued between 1920 and 1923 showing a photograph of the interior although, sadly, each uses the same photo! Do you have any information about the house? Ideally I would like to establish when the house was built and the identity of the original owner who commissioned Baillie Scott. If possible I would also like to locate some photographs of the house for my records. I have now identified over 300 designs by Baillie Scott, some of which were not erected, and have built up a record of photos / plans / drawings for over 250 of the designs.
3. **Charles Millson 1840 – 1929** - I am very keen to investigate some history of my great grandfather who was a resident of Bucklebury and was born in 1840 and died in 1929. He apparently built some of the first bicycles having wooden wheels with iron tires and he also taught members of the village how to ride them. I am anxious to find a picture of one of his bicycles to include in a record of my family history.

Helen Relf, grannyrelf@btinternet.com 01635 867619

David Tipton, drptipton@yahoo.co.uk 0118 971 2148

Tuesday Ladies' Club (TLC)



Since the last edition of the Oaks we have all indulged in chocolate and spring is finally here.

Meetings this year started off with an enlightening talk by Tony Higgott on the history of the buildings in Thatcham. We all learned a lot about some of the buildings we take for granted not realising just how old they are, seeing them in historical slides was fascinating.

February's meeting transported us to the infrastructure surrounding the building of Canary Wharf by Jon Willis. He talked enthusiastically about the history of the area and how important it was to install good transport links to make the business hub work, the homes and shopping malls came much later. Jon's talk has inspired some of us to think of taking a trip to London later in the year to visit the Wharf.

The March meeting covered the completely different topic by Andresa about skincare for more mature skins. In fact we touched topics ranging from High Street skin care products right through to facials and electrolysis. A very informative and an interactive Q&A session finished an interesting evening.

Our most recent meeting was with Simon Barnett from BBOWT who brought slides and a wealth of information and insight into the running of the 9 BBOWT sites in West Berkshire covering the sheer complexity of keeping the wildlife habitats balanced and healthy for us all to enjoy. My personal highlight was how to radio tag an Adder!

I don't want to wish the year away but here are topics in the diary so far for 2016;

- | | |
|----------------------------|---|
| 10 th May | The History of Ufton Court by Linda Clark |
| 14 th June | Visit the garden of Mill House Boxford, we will car share (Please note 1.15pm at The Oak Room, this is an afternoon visit) |
| 12 th July | Meal at the Cottage Inn and a quiz |
| No meeting in August | |
| 13 th September | Talk on Highclere Castle |
| 11 th October | The return of Tilly's Chocolates |

The Committee is trying to source varied topics and speakers but TLC is your Ladies Club and we welcome ideas that you might have for future dates. New members are always welcome!

We meet on the second Tuesday of the month in the Oak Room in Upper Bucklebury. The cost of each meeting is £3 to cover the hire of the hall and speakers also including refreshments. We look forward to seeing you there.

Committee members: Wynne Frankum, Jackie Sadler, Hilary Pask, Karin Warne, Sue Puri, & Janet Ford

Chapel Row Community Service Group

The Community Service Group was formed in 1980 and is a registered charity - funded by donations.

This is a group of volunteers set up to help the elderly, the lonely and those in need by such means as:- transport for those unable to use public transport to and from surgery, dentist, chiropodist, hospital visiting, essential shopping etc., We have two lunch clubs for those living on their own. These are held at the Woolhampton Village hall on the 1st and 4th Wednesday of each month at 12.30p.m. Transport is available if needed.

Please contact us if you know of anyone in need of our services whom we may be able to help by befriending the lonely, bereaved, housebound, handicapped and the mentally ill. Unless you speak for them we may never know.

Transport can be provided from Woolhampton to Chapel Row Surgery on Tuesday mornings for those without a car. Appointments should be made in advance by phoning the surgery.

If you wish to help with any of these projects please offer your services which will be very welcome. To get in touch telephone Mrs G. Cardy (0118) 971 3334). 9.30a.m. -11.30a.m. Monday Wednesday and Friday.

Erica Tipton – Secretary.
erica.tipton@yahoo.co.uk

Bucklebury History Group

TUESDAY 20th SEPTEMBER

**7.30pm in The Oak Room
Upper Bucklebury**

Entrance by ticket only

A chance to view old photographs of Bucklebury places and people,

Tell us about any memories that you have,
Help us put names to our unknown photographs

Please bring along any old photos that you are willing to share

Limited numbers so please obtain a ticket from

Helen Relf, 1 Woodside Close,
Upper Bucklebury, RG7 6QR.

Small charge of £2.00 to cover cost of the hall and refreshments

Halls

The Victory room



After a lengthy process of taking soundings from all corners of the community throughout the last year, we have submitted our planning application to West Berkshire Planning. We feel we have finally struck upon a design that remains sympathetic to the

surroundings while offering the very necessary upgrade in amenities. With a more timber-clad, traditional barn-style, featuring low hipped eaves and stepped ridge ends, the new building adopts more the local vernacular. For example, the porch and VR signage on the eastern elevation (ie roadside) retain the look and feel of the old Hall. The kitchen will be squarer and more functional with a dual aspect servery, accessed by a new entrance lobby on the southern elevation to make easier access from the car park. Toilet facilities are extended to include contemporary multi-cubicle facilities as well as a disabled WC which can be accessed from inside and outside. 3 storage areas will enable all chairs and tables to be stacked away rather than cluttering access to existing toilets.

To enable you to better envisage the new facility we plan to mount some exhibition panels in the Victory Room for you to peruse the proposed building. Hopefully these will be in place shortly. The exhibition will include artist impressions and architect plans with commentary to explain the design features in more detail. We will also arrange a series of 'Open Mornings' in the near future (probably at the weekend) to allow as many people to attend across the Parish and for you to ask any questions of the Trustees over a coffee.

We will keep you posted via parish noticeboards/ website on dates when the exhibition will be 'live' as well as the forthcoming Open Mornings.

John Clarke
Chair of the Trustees of The Victory Room
0118 9712768
john.clarke@live.co.uk

Sports

Bucklebury Tennis Club

www.buckleburytennisclub.com

THE CLUB CONTINUES TO FLOURISH

The additional court playing time from our floodlights, the excellent condition of the courts and the repainted and refurbished Clubhouse has brought about an increase in our membership. New activities such as Drills (under our floodlights) have created a new enthusiasm to keep fit in the winter months, so more members are ready to sign up to play league and knockout matches.

THE NEW SEASON

The summer leagues will start in May. We have already entered teams in the following categories: Men's doubles, Ladies doubles, Mixed doubles, plus a team in the Yorkshire Cup. Eight teams now represent Bucklebury in the Newbury & District and the Berkshire league.

As holders of the Yorkshire Cup (Mixed handicap) and top of Men's Division 1 (N&D LTA league), Top of Men's Over 45 in the Berkshire league; runners up in: Men's B, Men's C & Ladies A in their respective leagues, we are keen to stay at the top of the pile.

There is room for everyone to feature in one or other of these teams.

TENNIS FOR EVERYONE

On our Social calendar, we have a date set for Friday 6th May when we have arranged for a family **open afternoon and evening fun** tennis with a BBQ. The evening is open to everyone in the parish. There will be an emphasis on family participation. Come along and join the evening activities everyone is most welcome either to participate or to watch. A small charge will be made to cover the "Bangers, Burgers & Baps"

JUNIOR COACHING

The new season for our **Teens coaching** started on Monday 25th April. The sessions are for one hour from 4.45 p.m. on every Monday apart from half term. There are still places available so we would be delighted to hear from anyone who is interested. Sadly this summer we have not had sufficient response from younger budding players so we will not go ahead with the Junior Mini coaching.

Contact Karen Pegg k.p.pegg@btinternet.com

BALL MACHINE

The Club now has a ball machine. It is available to anyone who would like to try their luck at beating a MACHINE! It can handle up to 150 balls and sends them down the court at different elevations, different angles, and different speeds. It is a

good test of your skills and by the time you get to the 150th ball you are ready for a rest!

For the next 3 months the machine can be borrowed free of charge for a practice session. It will be kept in a private residence near to the court, and given out on loan, to be returned after use. (All interested parties see below)

DRILLS

Due to a higher usage of our courts and a busier schedule for our Coach, Damian, during the summer we are having a break from drills. They have proved a great success over the last winter period and there is still a demand for more! We intend to start the sessions again from early August. These will be on Mondays at 6.30 p.m. for an hour and 7.30 p.m. for an hour and a half. Make sure of your place NOW. August will soon come round again!

CLUB MEMBERSHIP AND OTHER ENQUIRIES

If you would like to join the Club, or if any of the above is of interest please contact: Mike James (01189712285) on m-a-james@tiscali.co.uk or go to our website: www.buckleburytennisclub.com



Table Tennis again!

Thanks to those who replied to my last article about starting a table tennis club. I think there would enough interest in the parish to start a club but unfortunately, now that we have measured up, it seems the current Victory Room is rather too narrow to fit in more than one table comfortably and within recommended guidelines. Storage of more tables would also be difficult.

As a start, however, there is now a table tennis table in the Victory Room, plus equipment, which anyone is welcome to use for a game of singles or doubles if they book the Victory Room for an hour or two through Dini Hunt the letting secretary (dini.hunt@btinternet.com). Rates are very reasonable at £7.00 ph, and there are plenty of available slots during the day or evenings.

When a new Victory Room is built, then a Bucklebury table tennis club would definitely be viable. Alternatively we could look for a venue outside the parish.

Lindy Clarke
lindy.clarke@live.co.uk
01189712768

Bucklebury Badminton Club

Come and play at your local club! Membership is increasing and many more locals are joining. It's a great way to meet new people, have fun and get fit at the same time. If you haven't played for a long time or even if you've never played, we will be pleased to see you on club night. If you are an experienced player with match practice then we have several teams in the local leagues and the standard is improving all the time. We are particularly looking for ladies to play in matches.

For more information check our website or Facebook. If you prefer you can phone for a chat before you come along.

VENUE: Elstree School, Woolhampton, RG7 5TD

DAY: Tuesday 8 to 10 p.m. September to mid July

COST: £5 for visitors (deducted from subscription which is £110 per annum **pro rata**. £50 for students)

CONTACT:

Margaret Neville 01635 873811

margaretnev@yahoo.co.uk

<http://buckleburybadminton.intheteam.com>

Country Life

Bucklebury Heathland Conservation Group

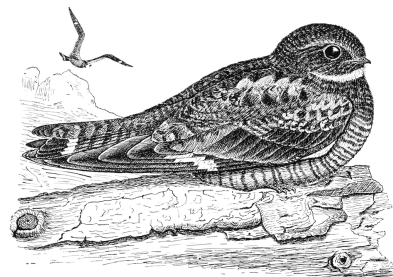
We are looking forward to a colourful summer. The heather seems to have overcome the "heather beetle" of two years ago, and there is plenty of moisture in the ground.

All the hard work done by volunteers and work parties will give us long vistas of purple heather for August.

We have heard the cuckoo on the common, now we are waiting for the return of the night-jars. Last year we had four calling males on the Lower Common and one calling male on the Upper Common. I wonder what we will get this year?

Please on a sunny evening do have a walk on the common, it's a very restful place and quite free!

Tim Culley



History of Bucklebury Cecilia Millson

After the war, when she and her husband came to live in Bucklebury, Mrs. Cecilia Millson produced some historical scenes for the Women's Institute. In her research she had to delve into the history of Bucklebury and in doing so she became interested personally. Mrs. Millson kindly agreed to write a series of articles on Bucklebury for the magazine, and which were first printed cir 1973.

Part IV

Francis Winchcombe died in 1619, remembering in his Will his family, his servants, and the poor of Bucklebury and Newbury. The estates passed to his son, Henry, the first of four generations of Winchcombes to bear that name.

The third Henry Winchcombe became a baronet in 1661 in recognition of his loyalty to the Crown during the Civil War. Bucklebury was involved in the conflict when Parliamentary forces camped on the Common before the Second Battle of Newbury, and the Parish Register shows that three soldiers were buried in the churchyard.

The Vicar of Bucklebury, the Reverend Guy Carlton, was arrested because of his Royalist sympathies. He was imprisoned in Lambeth House but, with the help of his wife, he escaped into a waiting boat on the Thames and joined King Charles II in exile. At the Restoration he returned to England to become one of the Chaplains-in-Ordinary to the King, then the Dean of Carlisle, the Bishop of Bristol and, finally, the Bishop of Chichester, making him one of the most famous of Bucklebury's vicars.

Sir Henry Winchcombe died in 1667, but his widow, Lady Frances Winchcombe, outlived him by forty years. Before she died she founded the Bluecoat School in Thatcham for the education of thirty boys from the parishes of Bucklebury, Thatcham and Little Shefford. A disused thirteenth century chapel was given for the school. Some of the older men living in Bucklebury today attended the school, so long did it remain in use. Now the charity is used to help apprentices and scholars.

The second baronet was blind from his youth, but this did not prevent him from taking an active part in public life. He was Member of Parliament for Berkshire from 1689 to 1695. He enlarged the chancel of the Church, adding the Manor Pew in 1701, and as this rebuilding coincided with the marriage of his daughter, Frances, to Henry St. John, later to become Lord Bolingbroke, it is thought that the alterations may have been made to commemorate this marriage, thought at the time to be such a good match, but which was destined to end in tragedy. In 1703 Frances inherited the Manor from her father, who left no male heir, and in the happier years of her marriage entertained her husband's illustrious friends. Dean Swift, Alexander Pope, John Gay and, traditionally, Queen Anne, are names associated with this period of Bucklebury's history.

Walk Upper Bucklebury, Bushnell's Green and Chapel Row

From Upper Bucklebury Memorial Hall Car Park cross the road and take the track opposite – at the end turn right and then left to walk past the cemetery. At the end of this quiet road cross the small car park, Angel's Corner, and take the by-way on the left, keeping the scout campsite on your left. Follow this lane past houses on your left, Foxhold, Osgood's Gully and Vanners until you come to the footpath leading through Bucklebury Farm Park, on your right and just as you head down the hill towards Bucklebury Village.

The footpath crosses fields to the left of the copse and takes you through a gate at the bottom (field sometimes contains llamas and goats!) and over a stile. Leave the park through the exit gates, cross the parking area into the field opposite and head towards the distant buildings to your left. Exit the field at the stile in the hedgerow to the road (Pease Hill) and turn left down the road. Fork right past the house and buildings of Manor Farm. Opposite the last building on the right (the former school) bear left onto mid-field path along the bottom of the Pang Valley (river is away to the left). Continue ahead at path crossing with the ditch on the right. Cross plank bridge, turn right to corner of this field, then left along the headland, finally to reach the road.

Turn right up the lane and, just over top of first rise, turn left along the woodland bridleway (Bushnell's Green). Follow path, bearing left at the far end and leave the corner of the wood at a bridle-gate. In open meadow ahead follow line of trees in the gully to second gate. **

Turn right and keeping the hedge on your right walk through the field until you come to a gate leading to a track. Follow this track to the end where it meets a road. (Track goes past apple orchard and houses.)

++Cross the road (there is a ditch to cross as well & The Bladebone Inn is on your left) and follow footpath across the common back towards Upper Bucklebury. Follow the track across Lower Common, past Scotland and the Fishponds, across the road (Pease Hill, again) and back to Angel's Corner and thence back to Upper Bucklebury.

** Here you can make the walk longer by turning left following the side of field until, facing a field-gate, turn right across meadow with ditch on left, leading to stile in sunken corner. Keep hedge on left in next meadow, then continue along fenced path to reach and turn down road (Jennett's Hill).

At the bottom of the hill turn right, passing left of Casey Court. Go between and then behind garages to swing-gate. Cross the field to footbridge and then, after a few paces, turn right down bank and climb towards swing-gate in hedge. After fenced path across small plantation, turn left along track for only 10

paces, then turn right, up increasingly steep path ascending Jennett's Hill Wood.

At the top bear left past cottage, following the drive to road. Turn right to T-junction, then right again (Cock Lane). Halfway round the bend in road, turn left through gate and across corner of field to another swing gate. Cross ahead into fenced path beside nursery (call in for an ice cream if they are open, you have deserved it!) and reaching open Common, go ahead along bridleway. At crossing byway, turn left for 15 yards, then fork right and soon right again, now with fields nearby on right.

You will shortly reach the roadside edge of Bucklebury Common lined with oak trees. Turn right and follow the road to Chapel Row, pass The Bladebone Inn and then over the green opposite the pub to continue with directions above. ++



West Berkshire Countryside Society (WBCS)

The events below give you the opportunity to come out on practical tasks, learn new skills, meet new people and, above all, enjoy yourself. The tasks usually begin around 10am and finish by 3pm but you are very welcome to come for as much time as you wish to give during these hours. Please wear suitable footwear and clothing, and bring a packed lunch if you are coming for the full day. Hot drinks are usually provided, as are the necessary tools.

For further information please see the website - www.westberkscountryside.org.uk

Thursday 26th May 7.30pm Society AGM in the Bruton Hall, Upper Basildon Village Hall, Bethesda Street, RG8 8NU After the Society business there will be a talk by Charles Gilchrist - demonstrating the benefits of the Society's conservation work.

Tuesday 7th June 10.00am Leyfield Meadow, Ashampstead Common SU 576 751 Meadow management bracken bashing. Meet at The Cottage, Ashampstead Common

Tuesday 14th June 10.00am Furze Hill, Hermitage. SU 511 739. Butterfly meadow clearing. Parking in the new village hall car park.

Tuesday 21st June 10.00am Grimsbury Castle, Hermitage. SU511 723. Clearing invasive rhododendron from this ancient hill fort. Parking near the Estate house at the castle - by the interpretation board.

Tuesday 28th June 10.00am Kings Copse Bradfield Southend. SU 579 707. Bracken bashing on this SSSI. Park opposite the bungalow just before King's Copse House. Accessed via Jennetts Hill.

Contributions

Material to appear in The Oaks should be sent neatly typed for scanning or as a word-processor document (e.g. MS Word), attached to an e-mail and sent to "lindy.clarke@live.co.uk". Don't worry about layout as it will be re-formatted to the house-style. Please supply any pictures or artwork as separate files, as they are not usually recoverable from word processor files and don't forget to include captions for the pictures.

All contributions appertaining to the Parish are very welcome but the Parish Council reserves the right to adapt or omit submissions.

The deadline for submissions is the 20th of the month of publication.

Wynne Frankum

Published in February, May and October

By Bucklebury Parish Council.

Helen Pratt, Clerk,

Jasmine Cottage, Byles Green, Upper Bucklebury,

Reading. RG7 6SD. Telephone: 01635 863581

E-mail: buckleburyparishclerk@yahoo.co.uk

Copyright © Bucklebury Parish Council, 2016

(Printed by The Alpha Xperience, Newbury

Telephone 01635 523240)

Distributed free to all households in Bucklebury Parish,
and on the web:

<http://buckleburyparish.org/publications/the-oaks>

Parish Diary Dates

May

9th	Bucklebury Parish Council	7.45pm	The Committee Room, Memorial Hall
10th	Tuesday Ladies Club	7.45pm	Oak Room, Memorial Hall
12th	Bucklebury & Marlston Hort Soc	7.00pm	Cottismore Garden Centre Open Evening
16th	Mah-jong	2.00pm	Oak Room, Memorial Hall
20th	Annual Parish Assembly	8.00pm	The Memorial Hall
23rd	Bucklebury Planning Committee	8.00pm	The Victory Room

June

2nd	Bucklebury Walkers	10.00am	Rushall Manor Farm, Back Lane, Bradfield
6th	Mah-jong	2.00pm	Oak Room, Memorial Hall
10th	Queen's 90th Birthday Celebrations	6.00pm	Bucklebury Farm Park (advance ticket only)
13th	Bucklebury Parish Council	7.45pm	The Committee Room, Memorial Hall
14th	Tuesday Ladies Club	1.15pm	Garden visit at Mill House, Boxford
20th	Mah-jong	2.00pm	Oak Room, Memorial Hall
27th	Bucklebury Planning Committee	8.00pm	The Victory Room

July

4th	Mah-jong	2.00pm	Oak Room, Memorial Hall
7th	Bucklebury Walkers	10.00am	Bucklebury Farm Park
11th	Bucklebury Parish Council	7.45pm	The Committee Room, Memorial Hall
12th	Tuesday Ladies Club	7.45pm	Meal at Cottage Inn and quiz
16th	Bucklebury & Marlston Hort Soc	2.00pm	Summer Show at the Memorial Hall
18th	Mah-jong	2.00pm	Oak Room, Memorial Hall
23rd	Bucklebury & Marlston Hort Soc	9.00am	Car outing to RHS Wisley
25th	Bucklebury Planning Committee	8.00pm	The Victory Room

August

1st	Mah-jong	2.00pm	Oak Room, Memorial Hall
4th	Bucklebury Walkers	10.00am	The Cottage Inn
8th	Bucklebury Parish Council	7.45pm	The Committee Room, Memorial Hall
15th	Mah-jong	2.00pm	Oak Room, Memorial Hall
22nd	Bucklebury Planning Committee	8.00pm	The Victory Room
27th	Chapel Row Fayre	1.00pm	The Green, Chapel Row

September

1st	Bucklebury Walkers	10.00am	Victory Room carpark
5th	Mah-jong	2.00pm	Oak Room, Memorial Hall
10th	Bucklebury & Marlston Hort Soc	2.00pm	Autumn Show at the Memorial Hall
12th	Bucklebury Parish Council	7.45pm	The Committee Room, Memorial Hall
13th	Tuesday Ladies Club	7.45pm	Oak Room, Memorial Hall
19th	Mah-jong	2.00pm	Oak Room, Memorial Hall
20th	History Group	7.30pm	Oak Room, Memorial Hall (advance ticket only)
24th	Wine quaffing evening	7.30pm	Woodies, Bucklebury Farm Park
26th	Bucklebury Planning Committee	8.00pm	The Victory Room

October

3rd	Mah-jong	2.00pm	Oak Room, Memorial Hall
6th	Bucklebury Walkers	10.00am	The Cottage Inn
8th	Bucklebury Beerfest	12noon	Bucklebury Village Recreation Ground
10th	Bucklebury Parish Council	7.45pm	The Committee Room, Memorial Hall
11th	Tuesday Ladies Club	7.45pm	Oak Room, Memorial Hall
15th	Common Clearing	2.00pm	The Memorial Hall
17th	Mah-jong	2.00pm	Oak Room, Memorial Hall
24th	Bucklebury Planning Committee	8.00pm	The Committee Room, Memorial Hall